

Città di Piazza Armerina

Provincia di Enna

IV° SETTORE LAVORI PUBBLICI ED URBANISTICA

Oggetto

"Opere di urbanizzazione di recupero e rinnovamento del tessuto urbano a seguito di avvenuto crollo con realizzazione di sistema di collegamento verticale tra Piazza Alcide De Gasperi e Piazza Sottosanti"

Parte D'opera: ELABORATI GRAFICI - ASCENSORE ED OPERE ACCESSORIE

Materiali:

Calestruzzo classe C25/30  
Resistenza caratteristica ds fck 250 kg/cmq  
Classe acciaio B450C  
Acciaio da carpenteria S 235.S 275

Committente: Comune di Piazza Armerina  
Impresa:

Contenuti:

- Pianta fondazioni
- Pianta impalcati
- Esecutivi platea
- Esecutivi Pareti (A)

scala

1/50  
1/100

I PROGETTISTI:

ING. DUMINUCO Mario

GEOM. GIANGRANDE Giovanni

IL R.U.P.:

ING. DUMINUCO Mario

IL RESPONSABILE DELLA SICUREZZA:

GEOM. SCIMONE Vittorio

Tavola Allegato

1	A	B	8	A	B
2	A	B	C	9	A
3	A	B	C	25	A
4	A	B			
5	A	B			
6	A	B			
7	A	B	C		

Data

Revisione

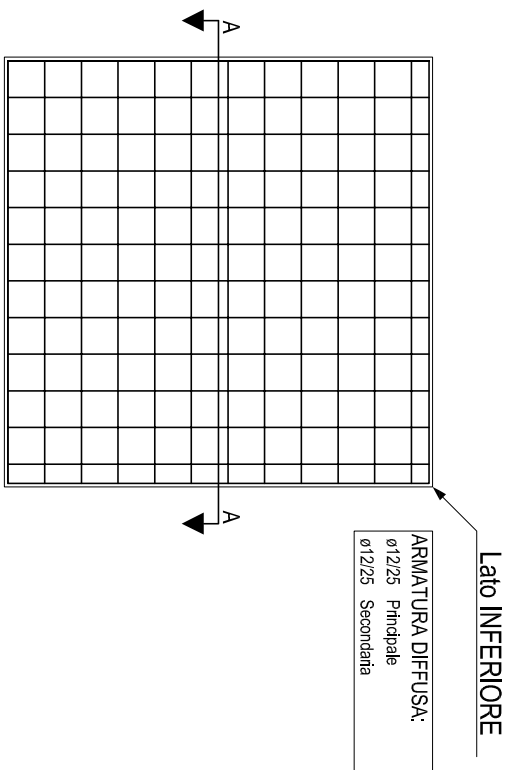
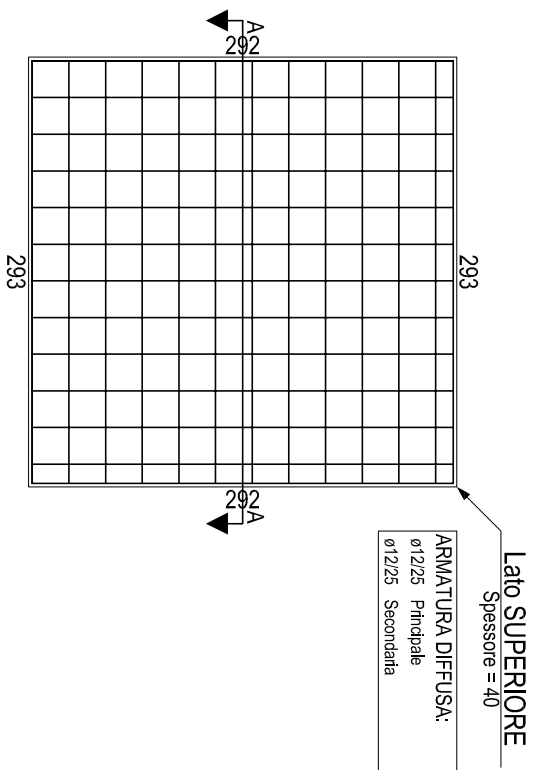
Aggiornamento

Protocollo

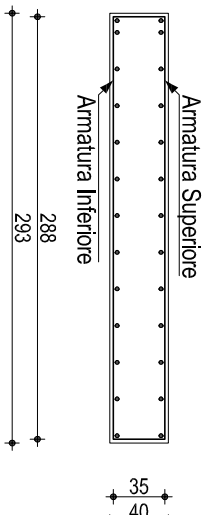
Il presente progetto è prodotto a norma di legge.

PLATEA 1

Fondazione

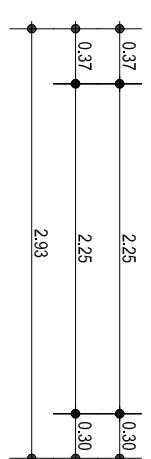
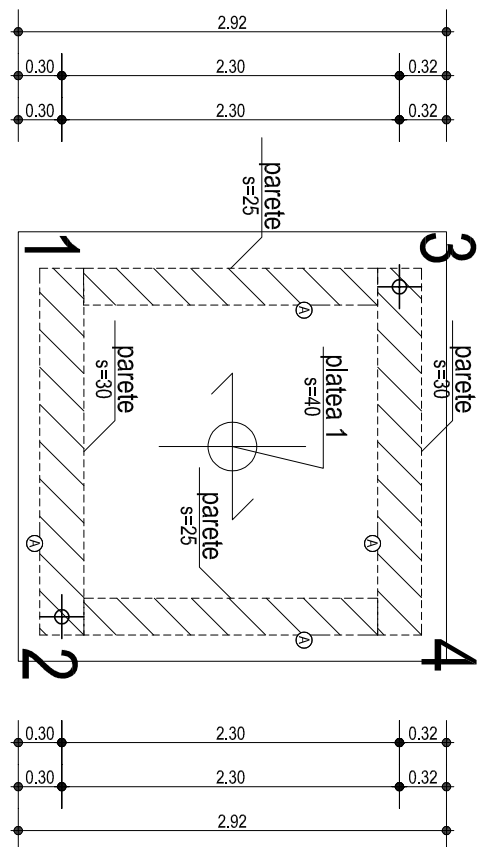
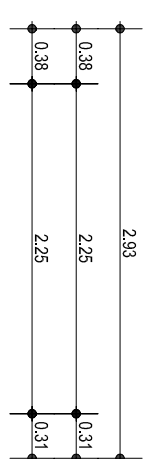


Sezione A-A



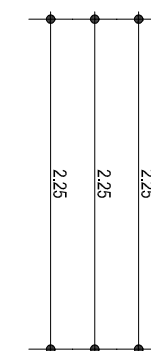
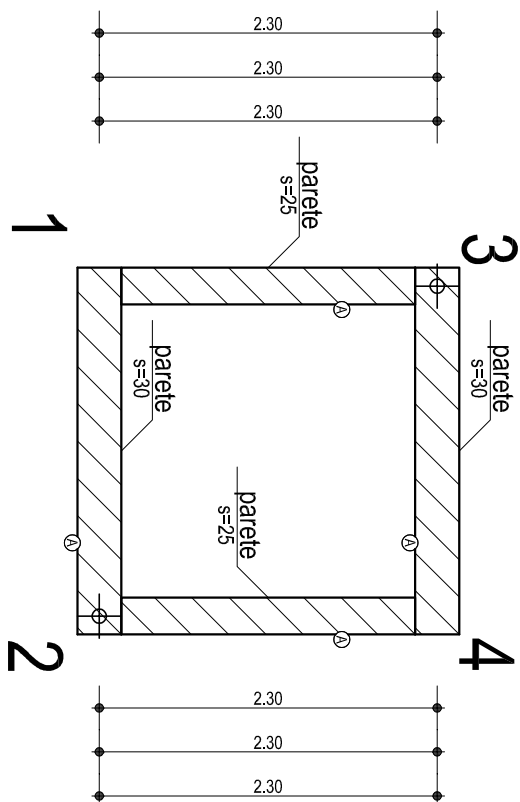
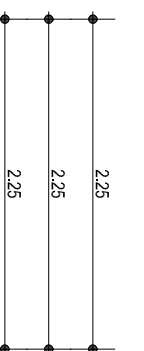
Scala: 1/50

FONDAZIONE



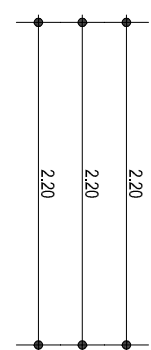
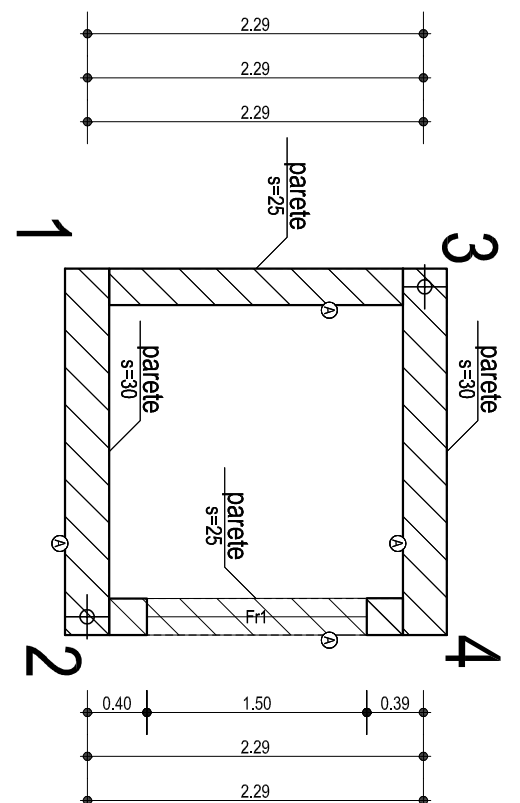
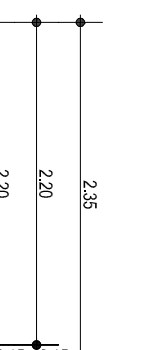
Scala: 1/50

FOSSA



Scala: 1/50

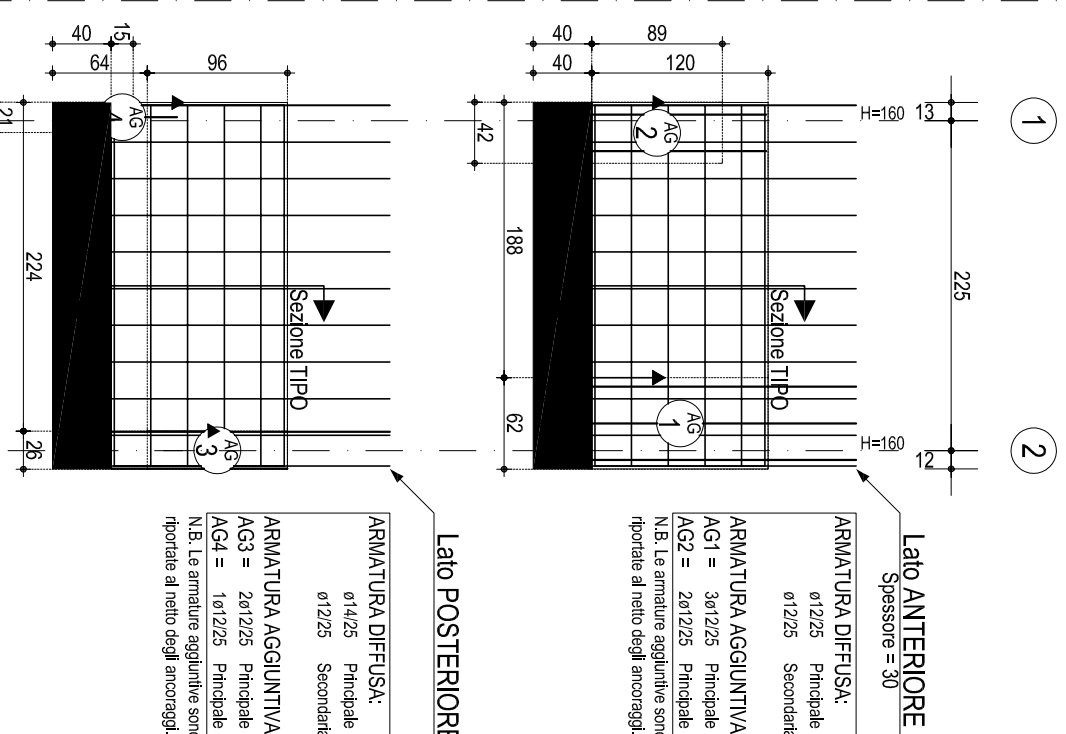
PIANO PRIMO



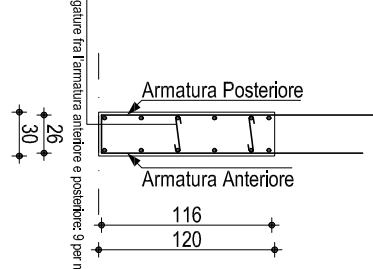
Scala: 1/50

PARETE 1-2

Fossa

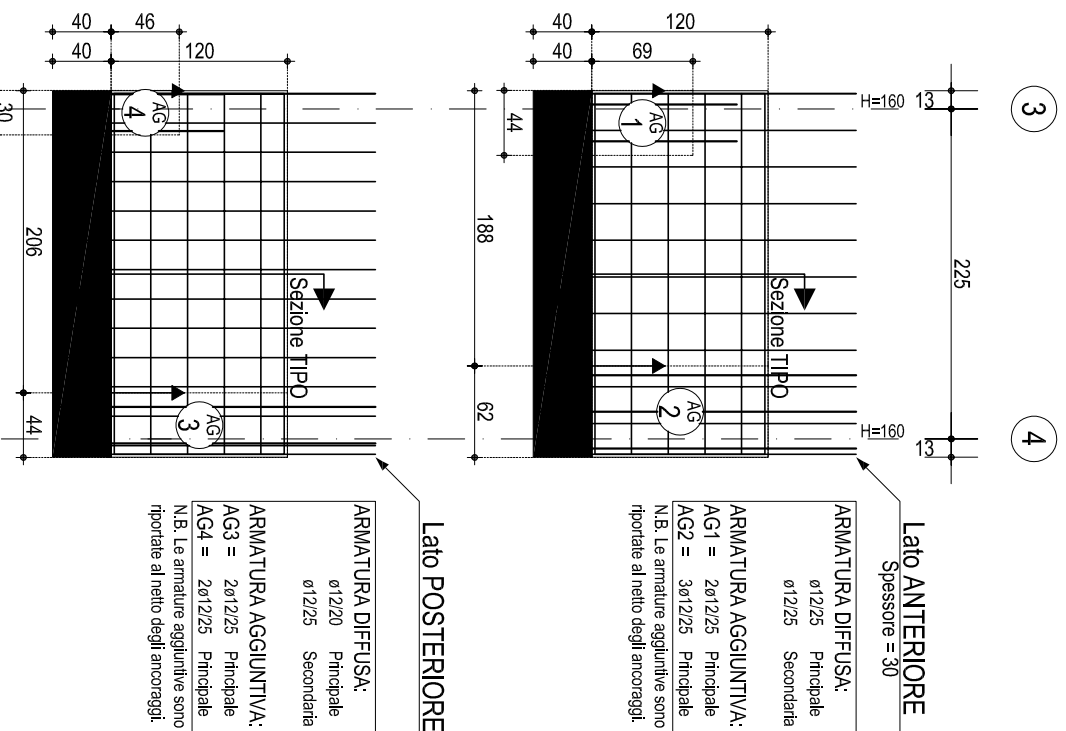


Sezione TIPO

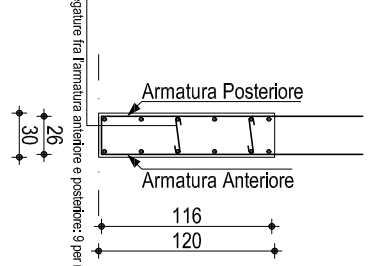


PARETE 3-4

Fossa



Sezione TIPO

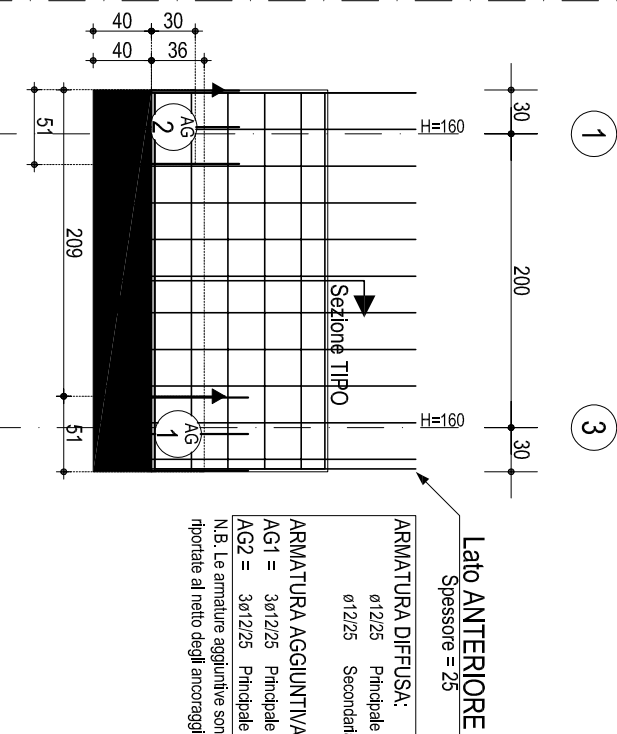


Scala: 1/50

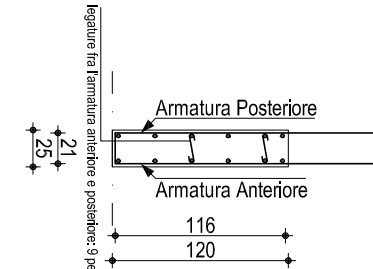
Scala: 1/50

PARETE 1-3

Fossa

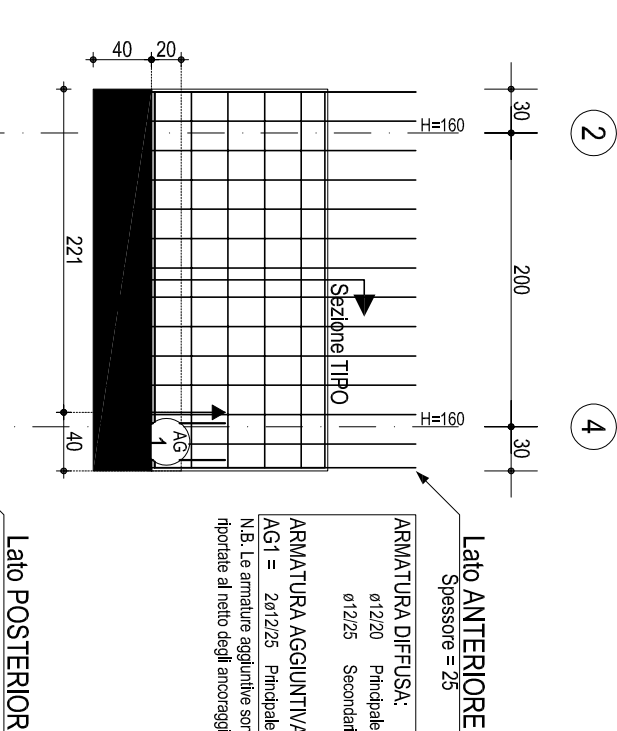


Sezione TIPO

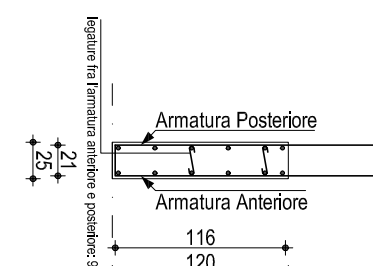


PARETE 2-4

Fossa



Sezione TIPO



Scala: 1/50

Scala: 1/50