

REALIZZAZIONE DI TENSOSTRUTTURA PER  
IMPIANTO SPORTIVO DI ESERCIZIO POLIVALENTE,  
SITO IN VIA DEGLI ULIVI  
CONTINTE DI TRELSTERNI 1985

18 GEN. 2010

18 GEN. 2010

**P** **FAVOREVOLE**



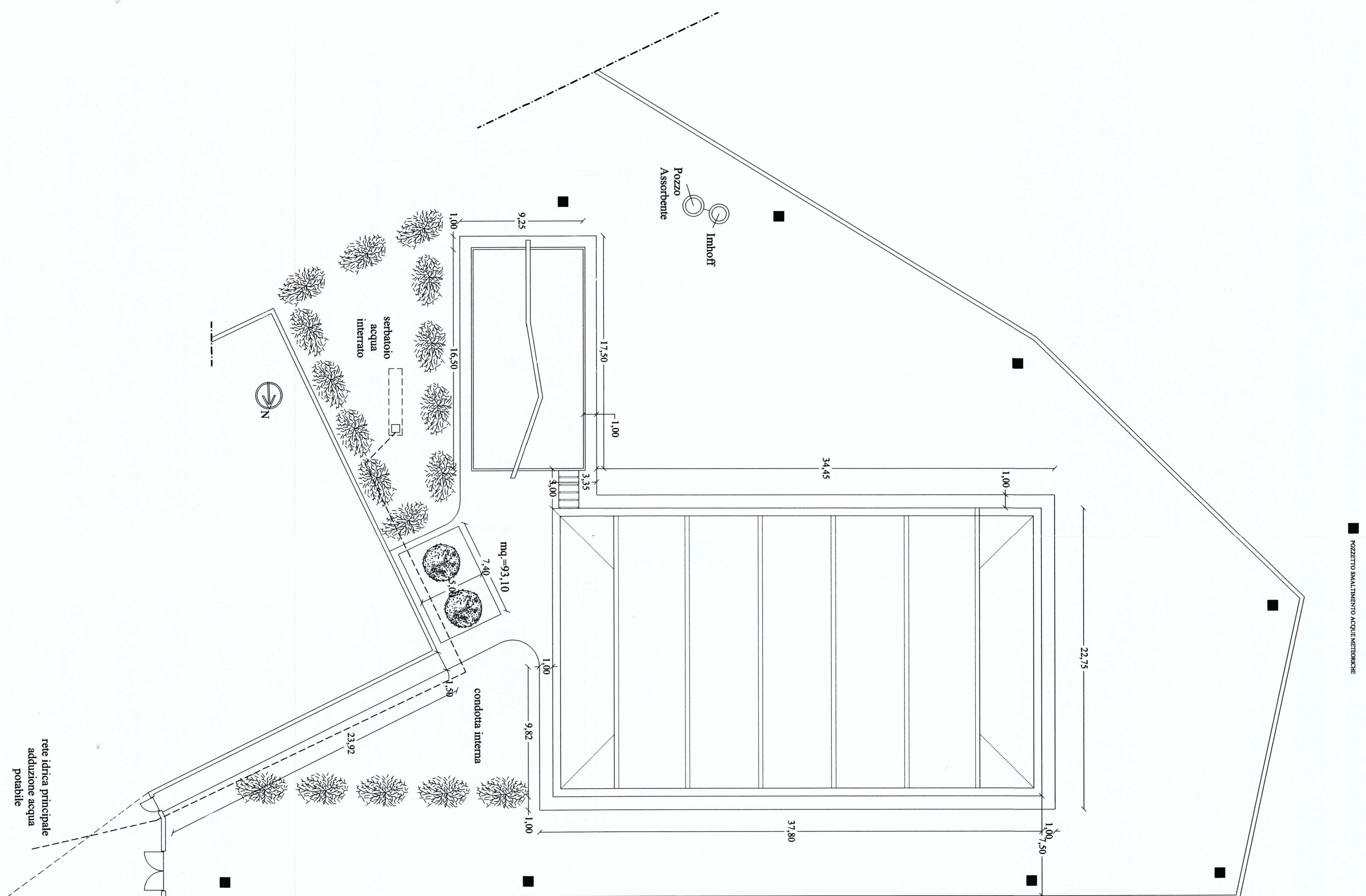
PIANTE, PROSPETTI E SEZIONI scala 1:100

PLANTE, PROSPETTI E SEZIONI scala 1:100

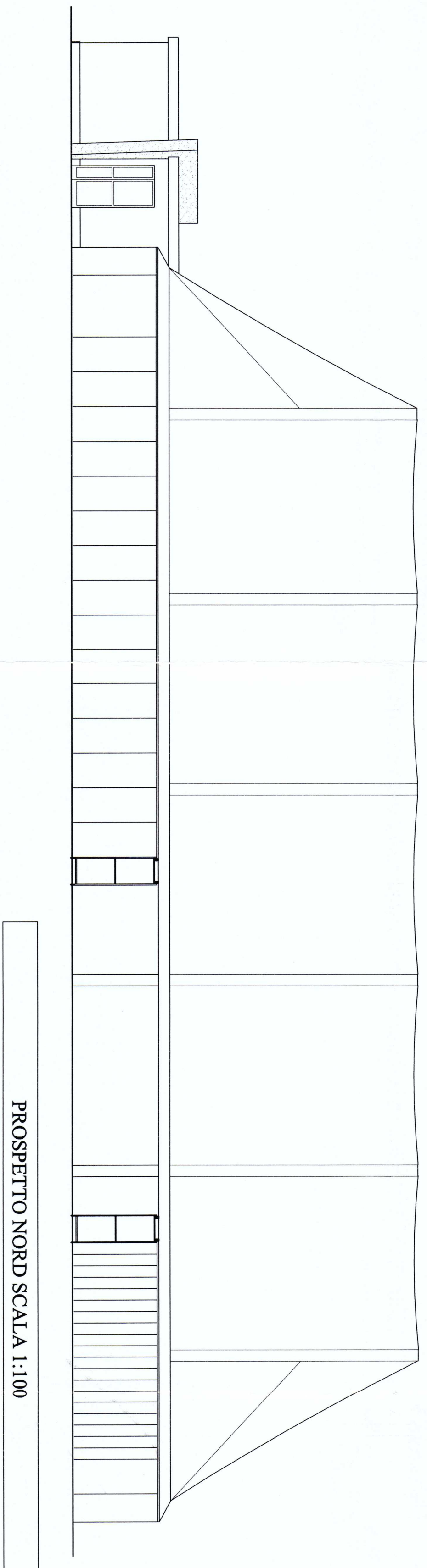
TREMESTIERI ETNEO, LT\*

L'UFFICIO TECNICO COMUNALE

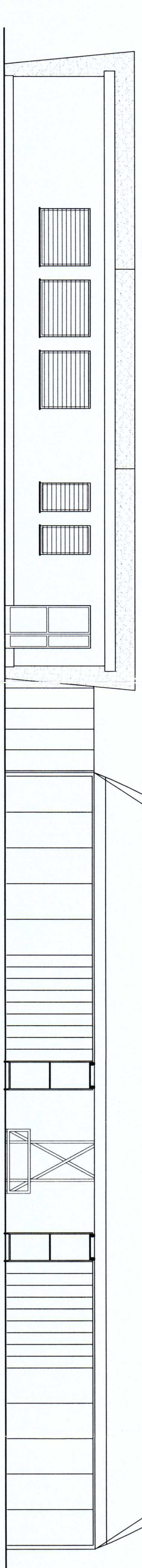
A2



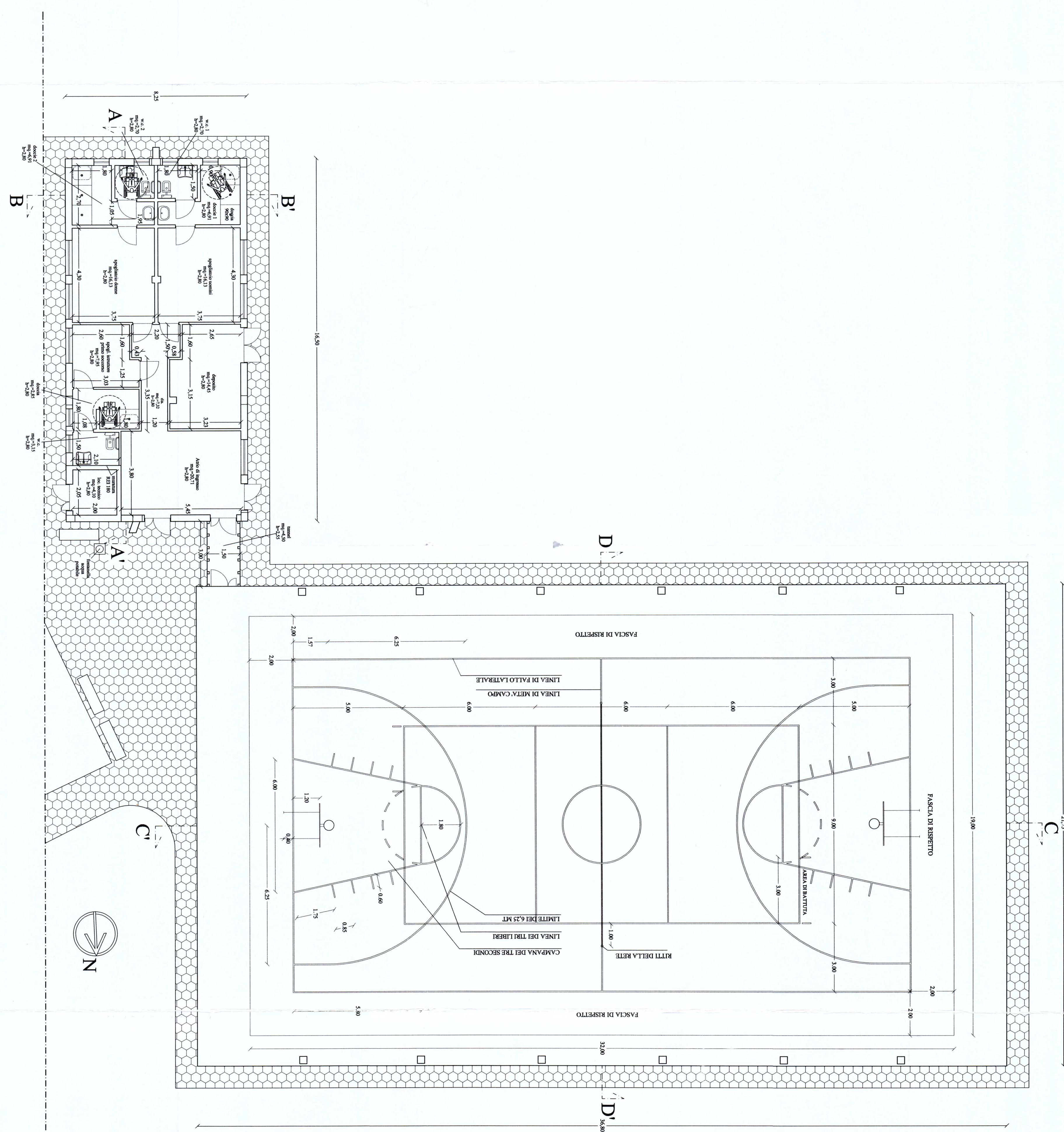
STRALCIO PLANIMETRICO SCALA 1:200



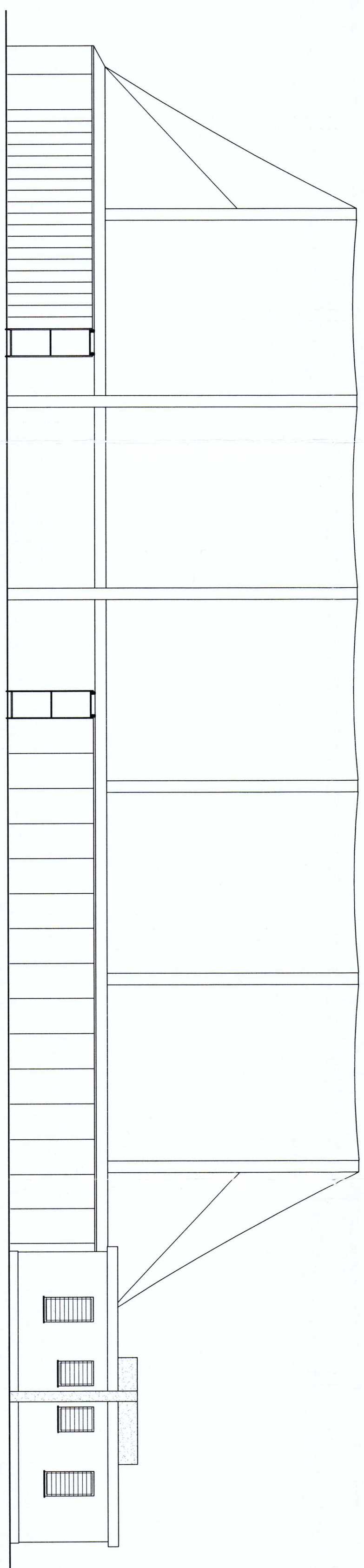
PROSPETTO NORD SCALA 1:100



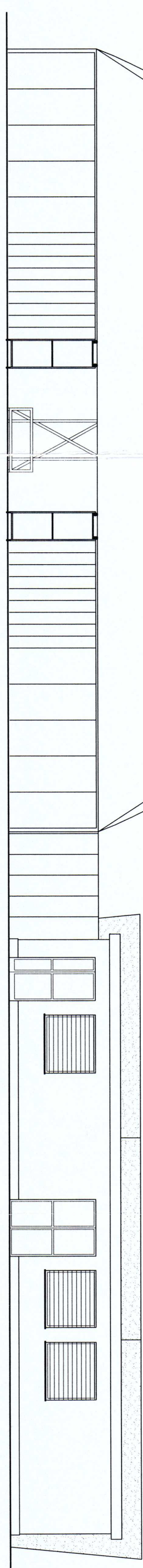
PROSPETTO EST SCALA 1:100



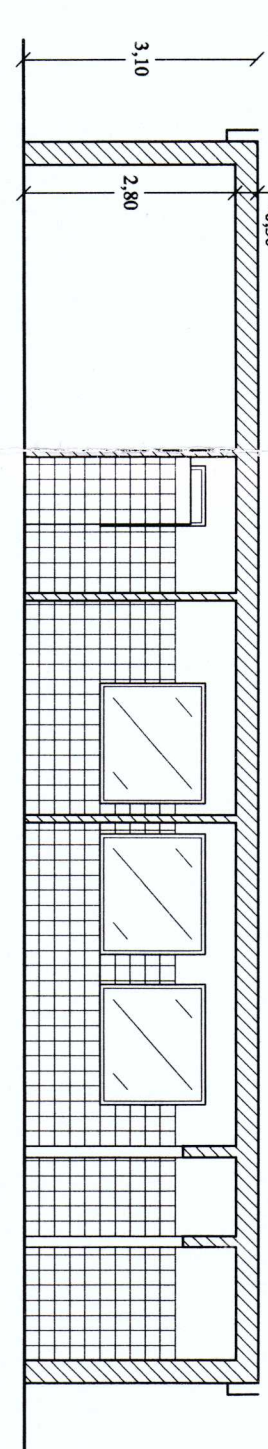
PIANTA QUOTA +1,50 SCALA 1:100



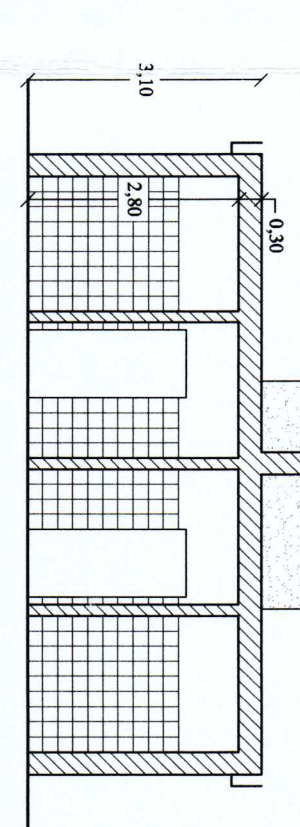
PROSPETTO SUD SCALA 1:100



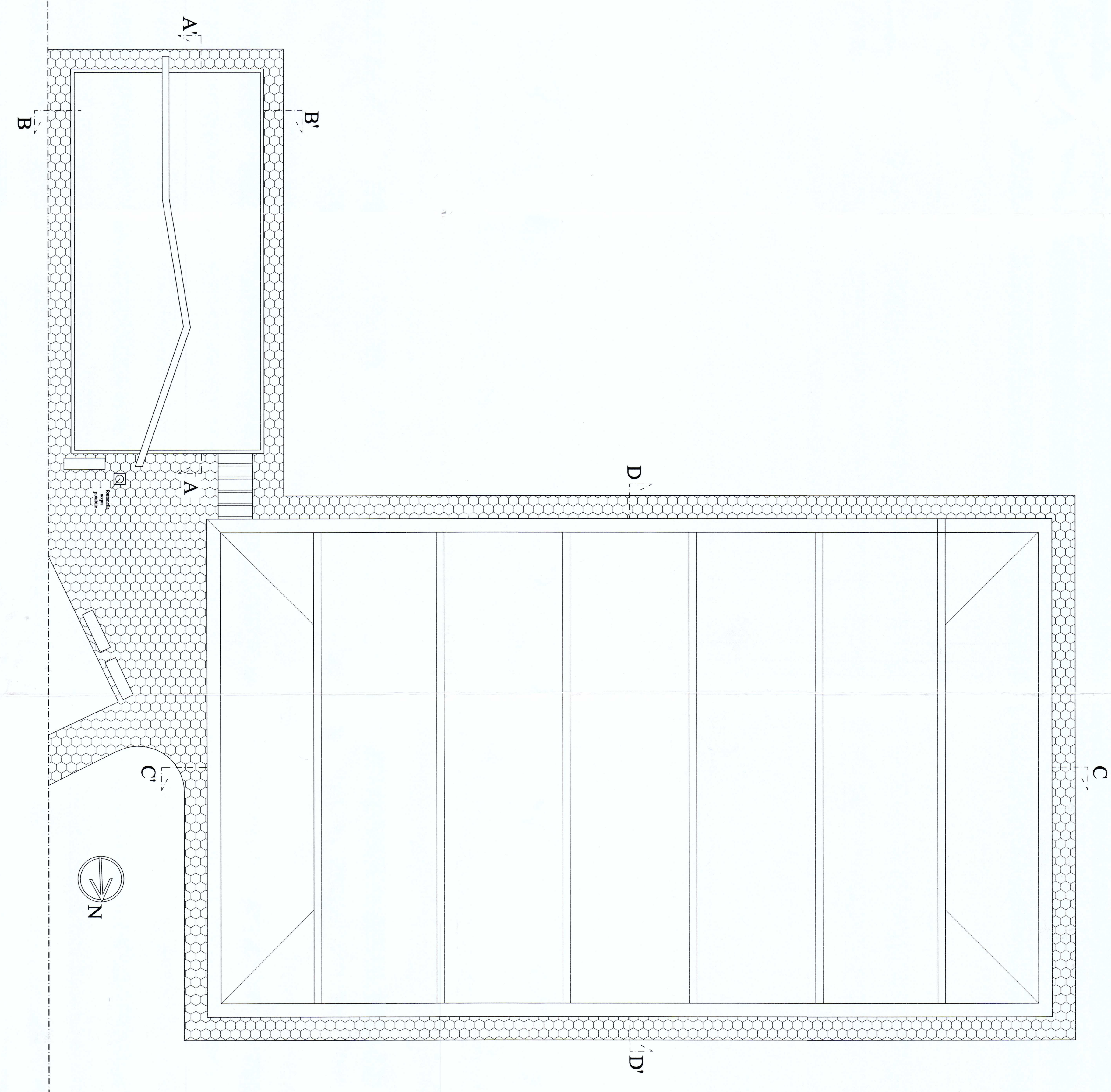
PROSPETTO NORD SCALA 1:100



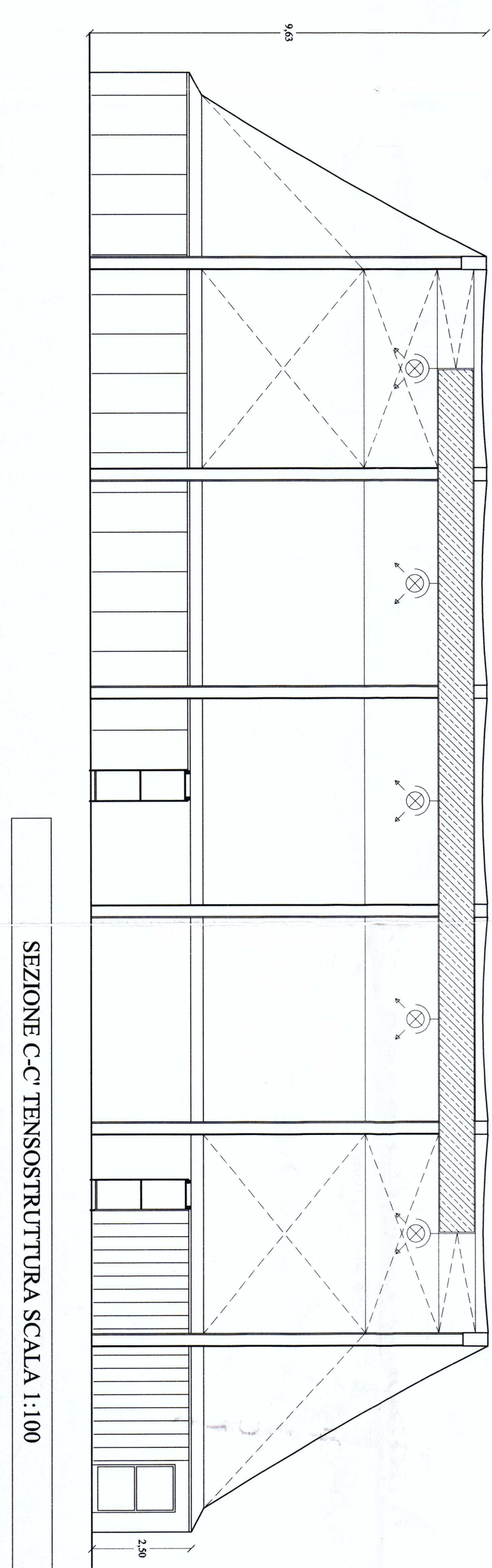
SEZIONE A-A' SPOGLIATOIO SCALA 1:100



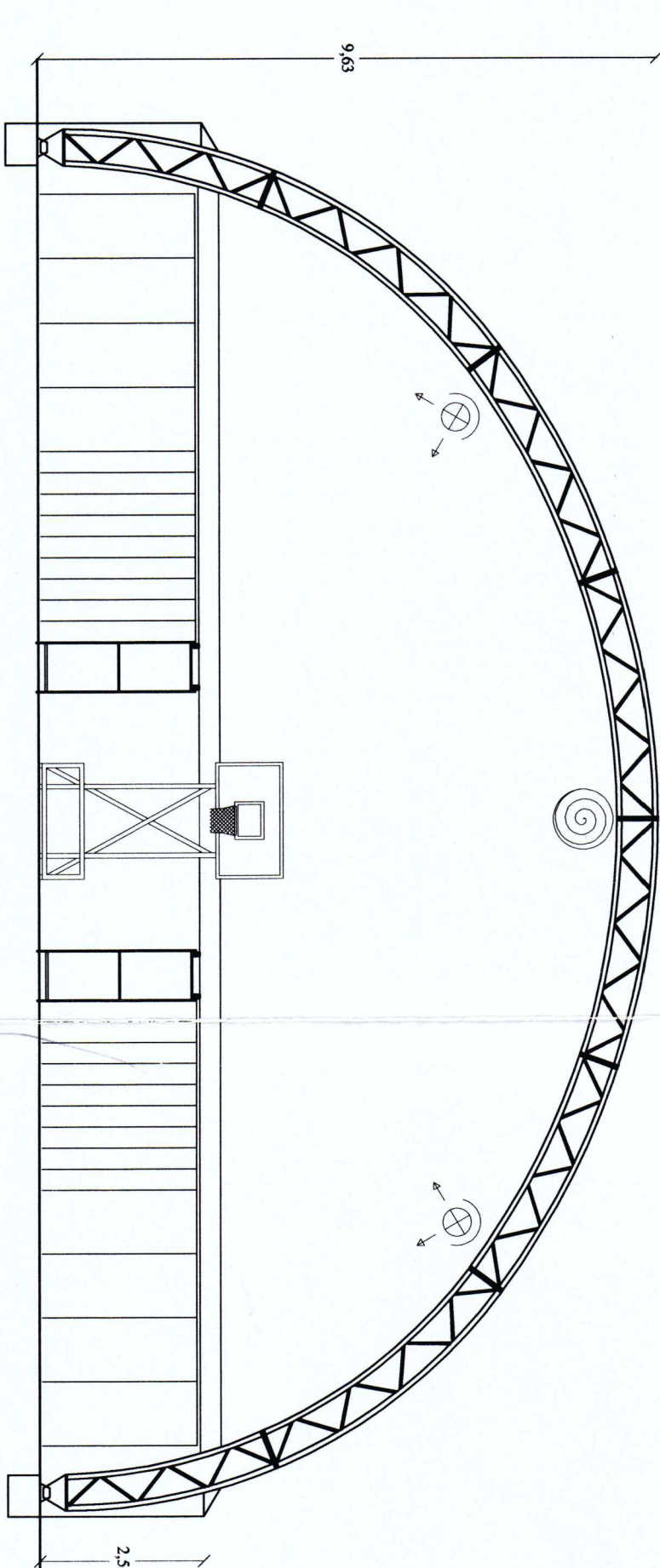
SEZIONE B-B' SPOGLIATOIO SCALA 1:100



PIANTA COPERTURA SCALA 1:100



SEZIONE C-C' TENSOSTRUTTURA SCALA 1:100



SEZIONE D-D' TENSOSTRUTTURA SCALA 1:100