



REPUBBLICA ITALIANA



UNIONE EUROPEA



REGIONE SICILIANA



COMUNE DI PALAZZO ADRIANO
Città Metropolitana di Palermo

Fondi del Piano di Azione e Coesione (POC 2014/2020) da destinare ai comuni ai sensi del comma 22 dell'art. 7 della L.R. 3/16 e del comma 7 dell'art. 21 della L.R. 8/17 - Linea di intervento 3.1.4.2 (Sviluppo Urbano Sostenibile) PO FESR 2007/2013

PROGETTO PER IL MIGLIORAMENTO DEL PAESAGGIO CULTURALE URBANO DELLE TRE CITTADELLE ATTRAVERSO IL RESTAURO DELLE 24 FONTANE E L'ADEGUAMENTO SISMICO DI UN EDIFICIO COMUNALE DA DESTINARE A CENTRO DI MICRO RACCOLTA DELLE FRAZIONI DIFFERENZIATE DEI RIFIUTI URBANI SPECIALI (.....in sintonia con la convenzione Europea del paesaggio e con la strategia tecnica Europea per l'ambiente urbano)

PROGETTO ESECUTIVO

Art. 23 comma 8 del D.Lgs. 50/2016 e ss.mm.ii.

TRAVATURE

Tavola

S-07

SCALA

varie



PARERI:

Comune di Palazzo Adriano

Città Metropolitana di Palermo
Ufficio Tecnico - III Settore - Urbanistico e Ambiente

VISTO il Progetto Esecutivo SI ESPRIME
PARERE TECNICO FAVOREVOLE
ai sensi dell'art. 5, comma 3 della Legge Regionale
n. 12 del 12/07/2011

Palazzo Adriano li,

09 AGO. 2019

Il R.U.P.

Geom. Francesco LA SALA

Comune di Palazzo Adriano

Città Metropolitana di Palermo
Ufficio Tecnico - III Settore - Urbanistico e Ambiente

VERIFICA del progetto esecutivo ai sensi dell'art. 26, comma 1
e 6 del D.Lgs n. 50 del 18/04/2016 e s.m.i. e VALIDAZIONE
POSITIVA ai sensi dell'art. 26, comma 8 del D.Lgs n. 50 del
18/04/2016 e s.m.i.

Palazzo Adriano li,

09 AGO. 2019

Il R.U.P.

Geom. Francesco LA SALA

IL SINDACO

Geom. Nicolò GRANA'

Il R.U.P.

Geom. Francesco LA SALA

Data:

09 AGO. 2019

Aggiornamento:

Variante:

PROGETTAZIONE - UFFICIO TECNICO 3° SETTORE

PROGETTISTA E CSP

Arch. Giovanni SPERANZA



Comune di PALAZZO ADRIANO

Provincia di PALERMO

ESECUTIVI DI CANTIERE

TRAVI Sottomurazione Fondazioni

Oggetto: PROGETTO PER IL MIGLIORAMENTO DEL PAESAGGIO CULTURALE URBANO
DELLE TRE CITTADELLE ATTRAVERSO IL RESTAURO DELLE 24 FONTANE
E L'ADEGUAMENTO SISMICO DI UN EDIFICIO COMUNALE DA DESTINARE
A CENTRO DI MICRO RACCOLTA DELLE FRAZIONI DIFFERENZIATE DEI R.U.S.

Ditta: Comune di Palazzo Adriano

Data: 09/08/2019

Materiali

CLS
C25/30
ACCIAIO LONGITUDINALI
B450C
ACCIAIO STAFFE
B450C

Il Progettista
Arch Giovanni Speranza

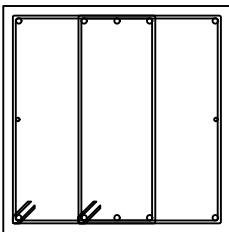
Il Direttore dei lavori

Il Calcolatore
Arch. Giovanni Speranza

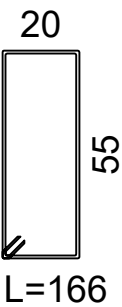
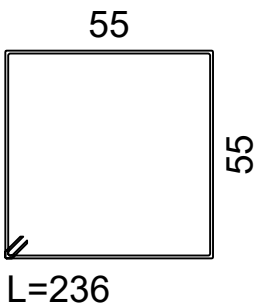
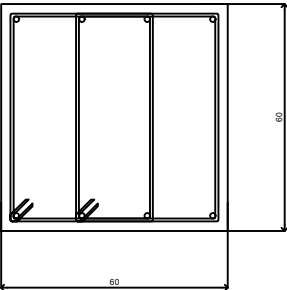
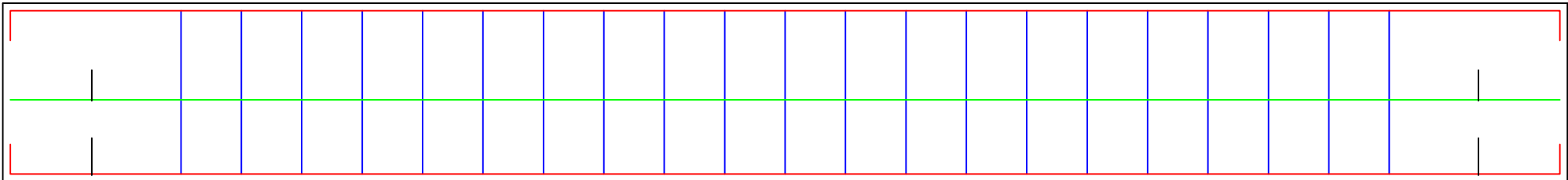
Travata 1 Fondazioni

7

1



Campata 7-1
Cls =C25/30
Acciaio =B450C



ø8/20(4 br)
407

5ø14 L=542
522

2ø10 L=522
522

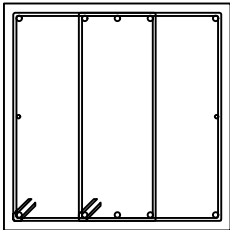
522
5ø14 L=542

Scala 1:20

Travata 2 Fondazioni

1

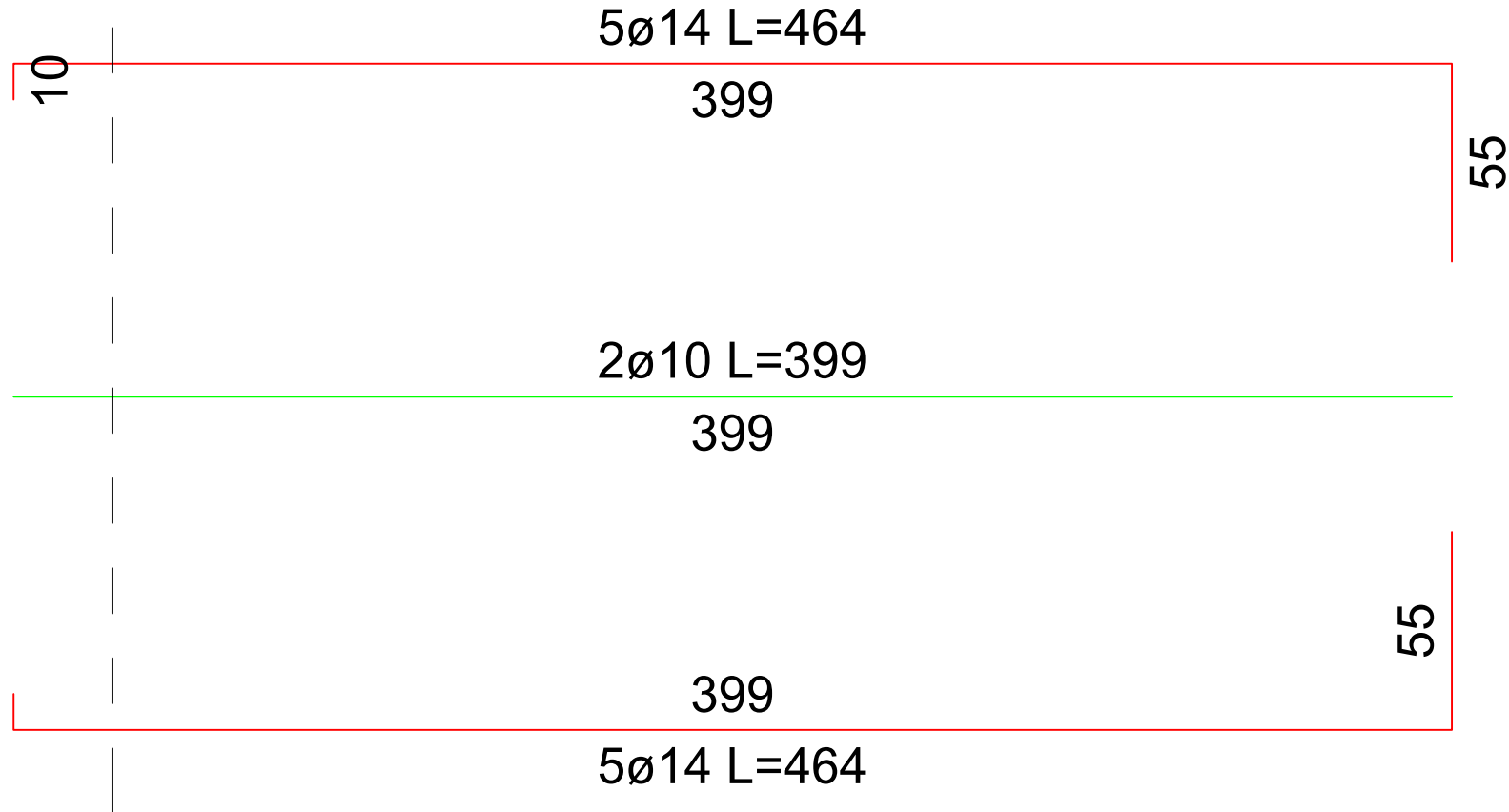
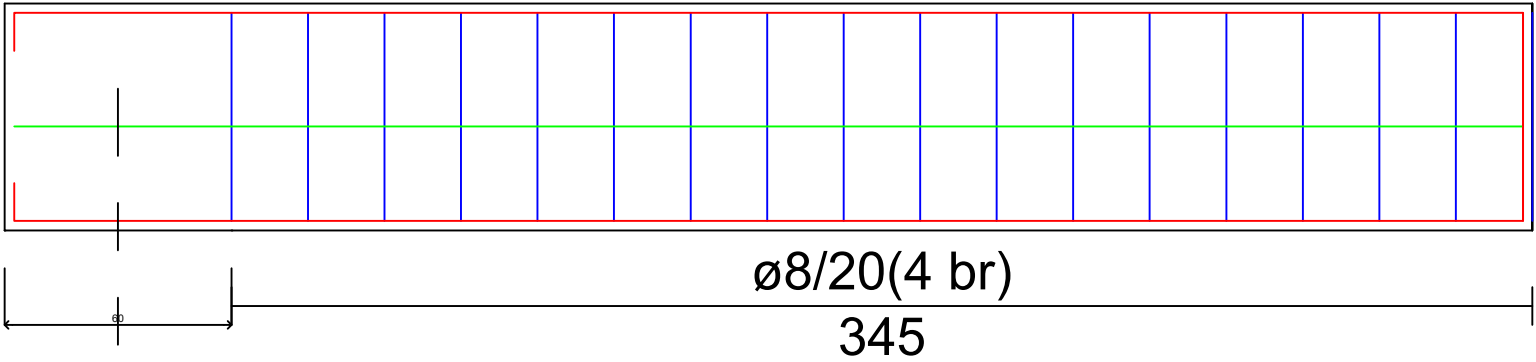
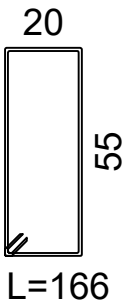
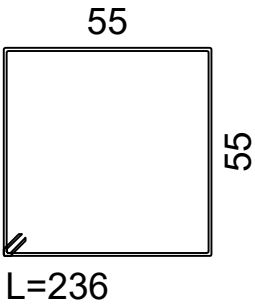
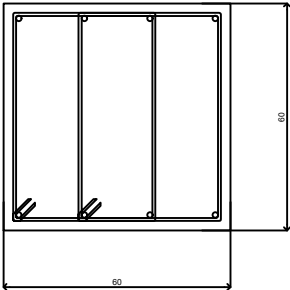
9



Campata 1-9

Cl_s =C25/30

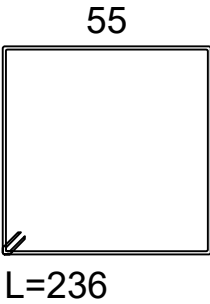
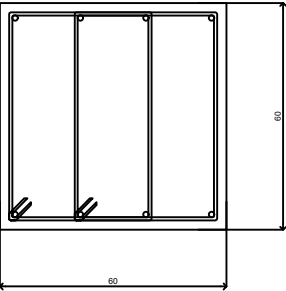
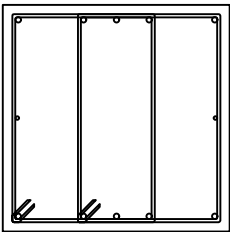
Acciaio =B450C



Scala 1:20

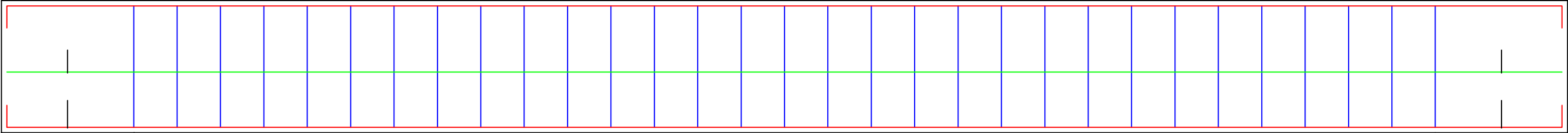
Travata 3 Fondazioni

Campata 2-3
Cls =C25/30
Acciaio =B450C



2

3



ø8/20(4 br)
591

5ø14 L=725
705

2ø10 L=705
705

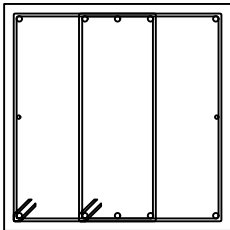
705
5ø14 L=725

Scala 1:20

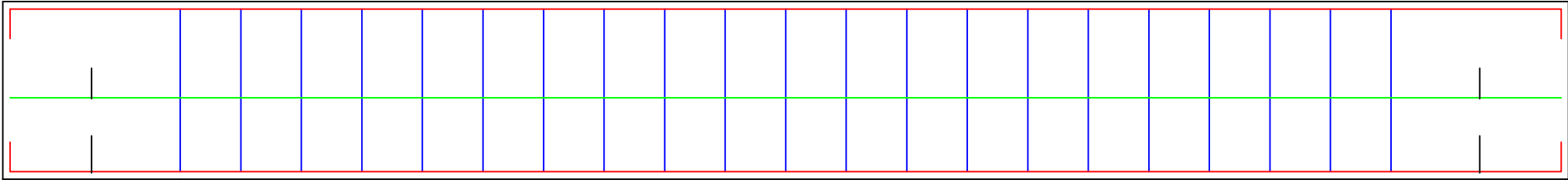
Travata 4 Fondazioni

6

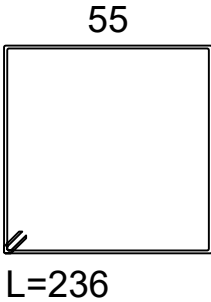
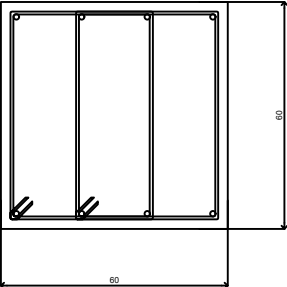
2



Campata 6-2
Cls =C25/30
Acciaio =B450C



ø8/20(4 br)
409



5ø14 L=544
524

2ø10 L=524
524

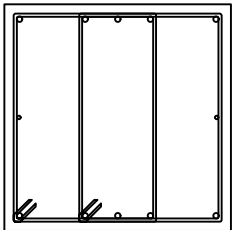
524
5ø14 L=544

Scala 1:20

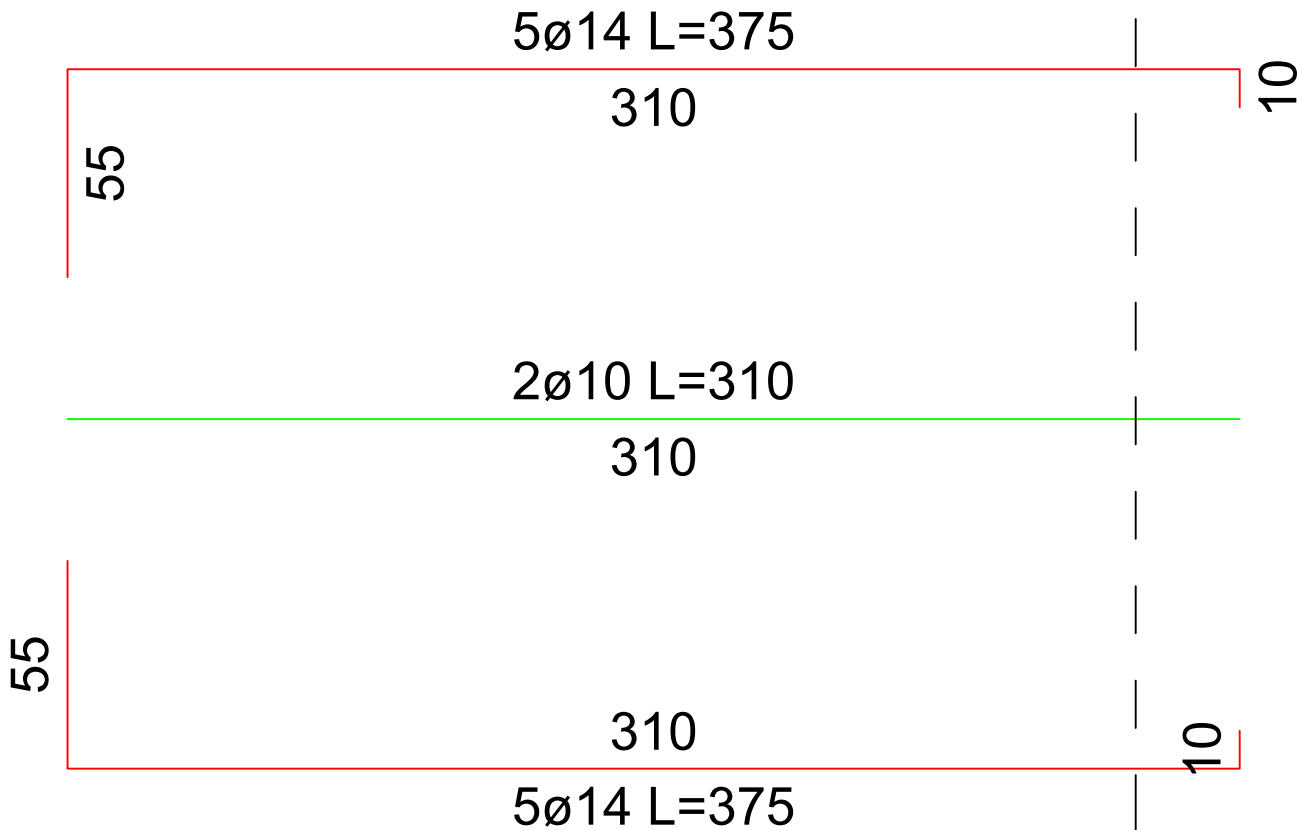
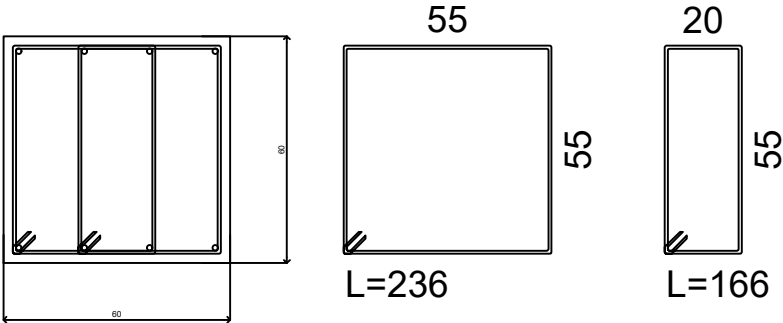
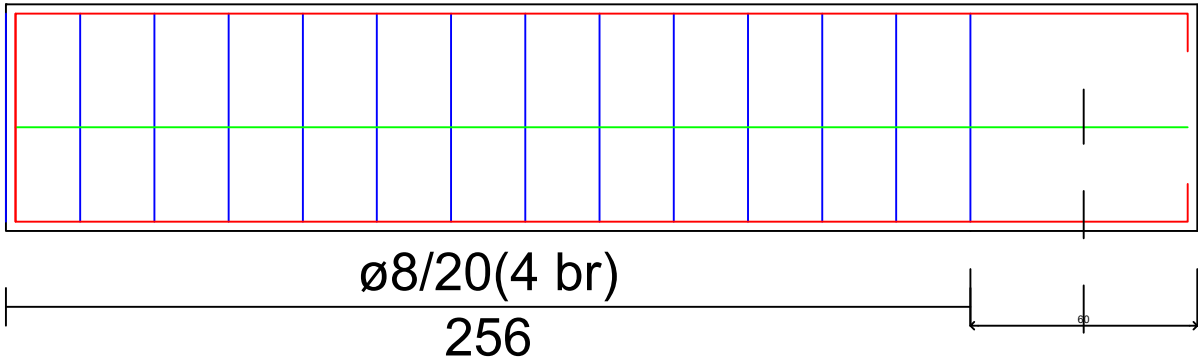
Travata 5 Fondazioni

9

2



Campata 9-2
Cls =C25/30
Acciaio =B450C



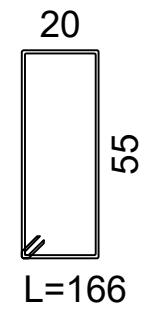
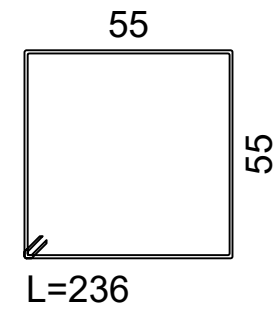
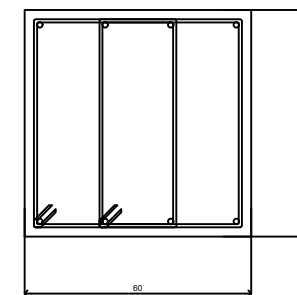
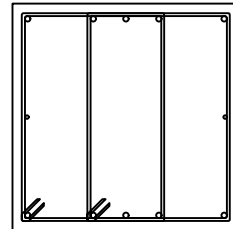
Scala 1:20

Travata 6 Fondazioni

Campata 3-4

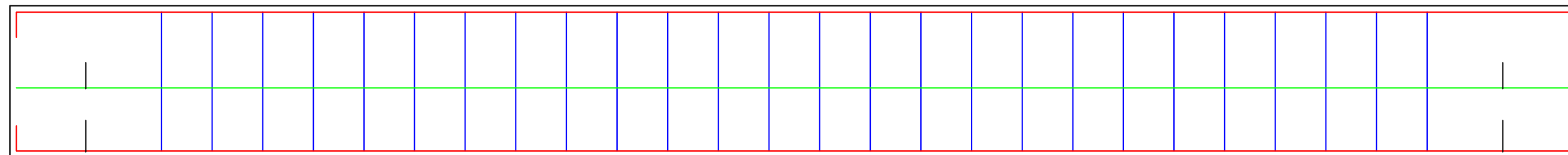
Cl_s =C25/30

Acciaio =B450C



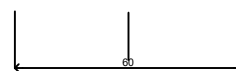
3

4



ø8/20(4 br)

502



5ø14 L=637

617

10

10

2ø10 L=617

617

10

10

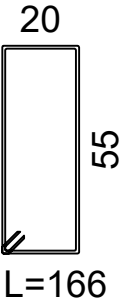
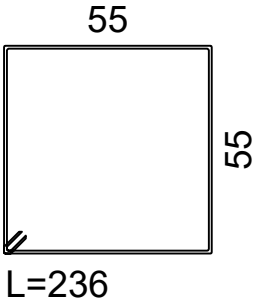
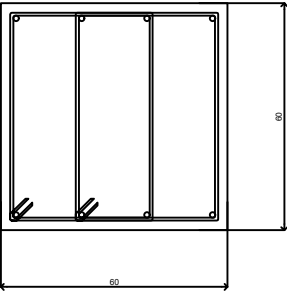
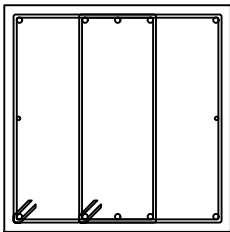
617

5ø14 L=637

Scala 1:20

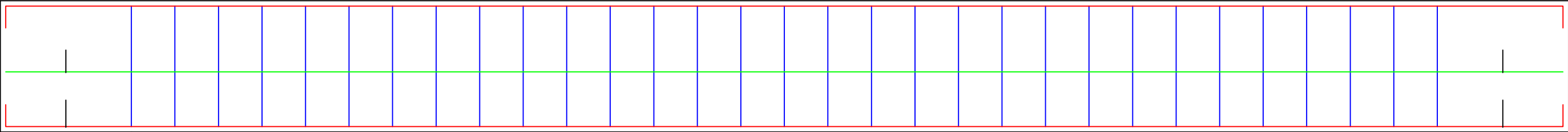
Travata 7 Fondazioni

Campata 4-5
Cls =C25/30
Acciaio =B450C

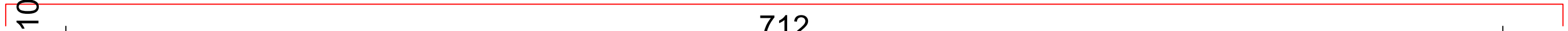


4

5



ø8/20(4 br)
598



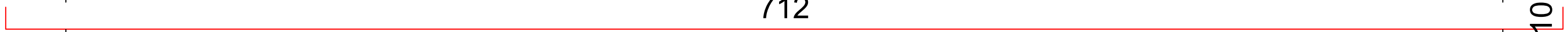
5ø14 L=732
712

10

10



2ø10 L=712
712



712
5ø14 L=732

10

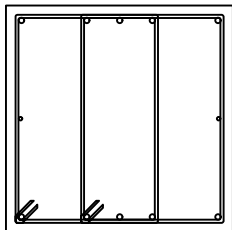
10

Scala 1:20

Travata 8 Fondazioni

5

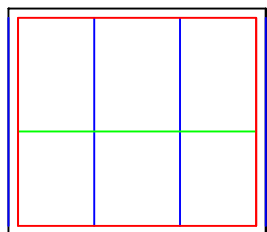
6



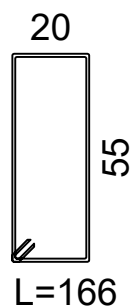
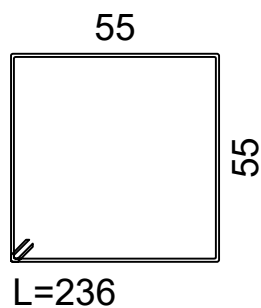
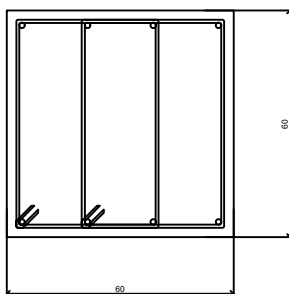
Campata 5-6

Cl_s = C25/30

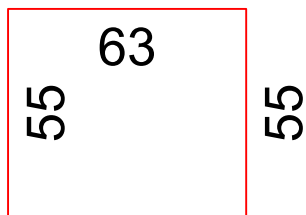
Acciaio = B450C



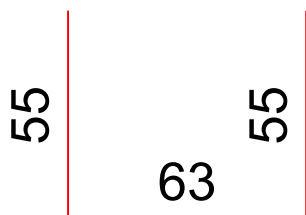
ø8/20(4 br)
68



5ø14 L=173



2ø10 L=63
63



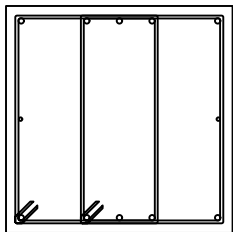
5ø14 L=173

Scala 1:20

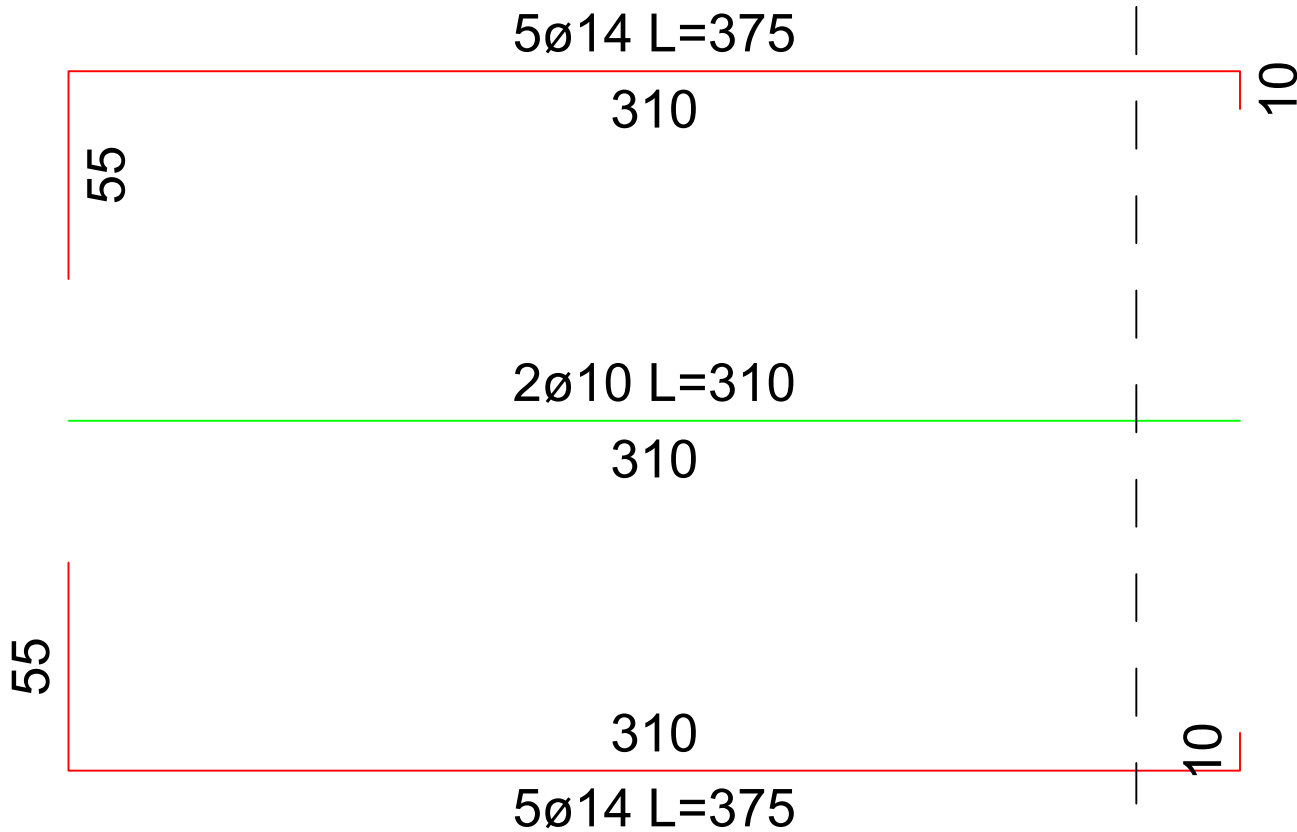
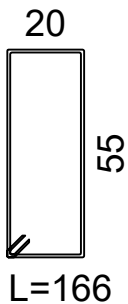
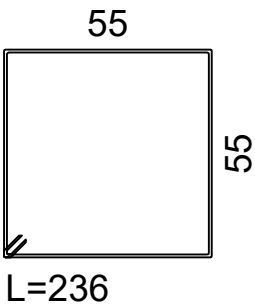
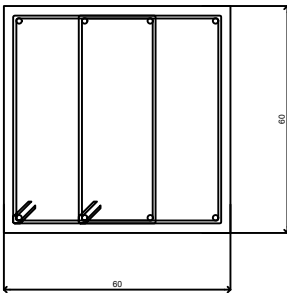
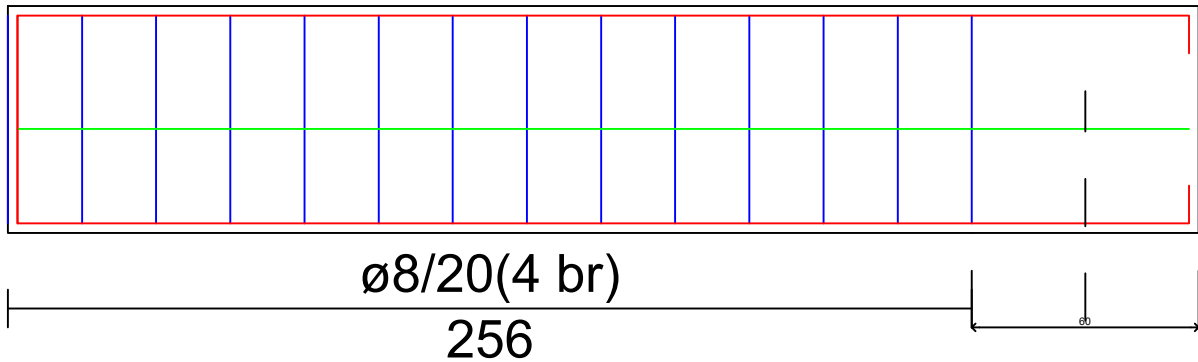
Travata 9 Fondazioni

8

6



Campata 8-6
Cls =C25/30
Acciaio =B450C

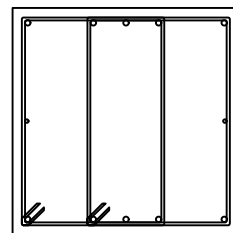


Scala 1:20

Travata 10 Fondazioni

7

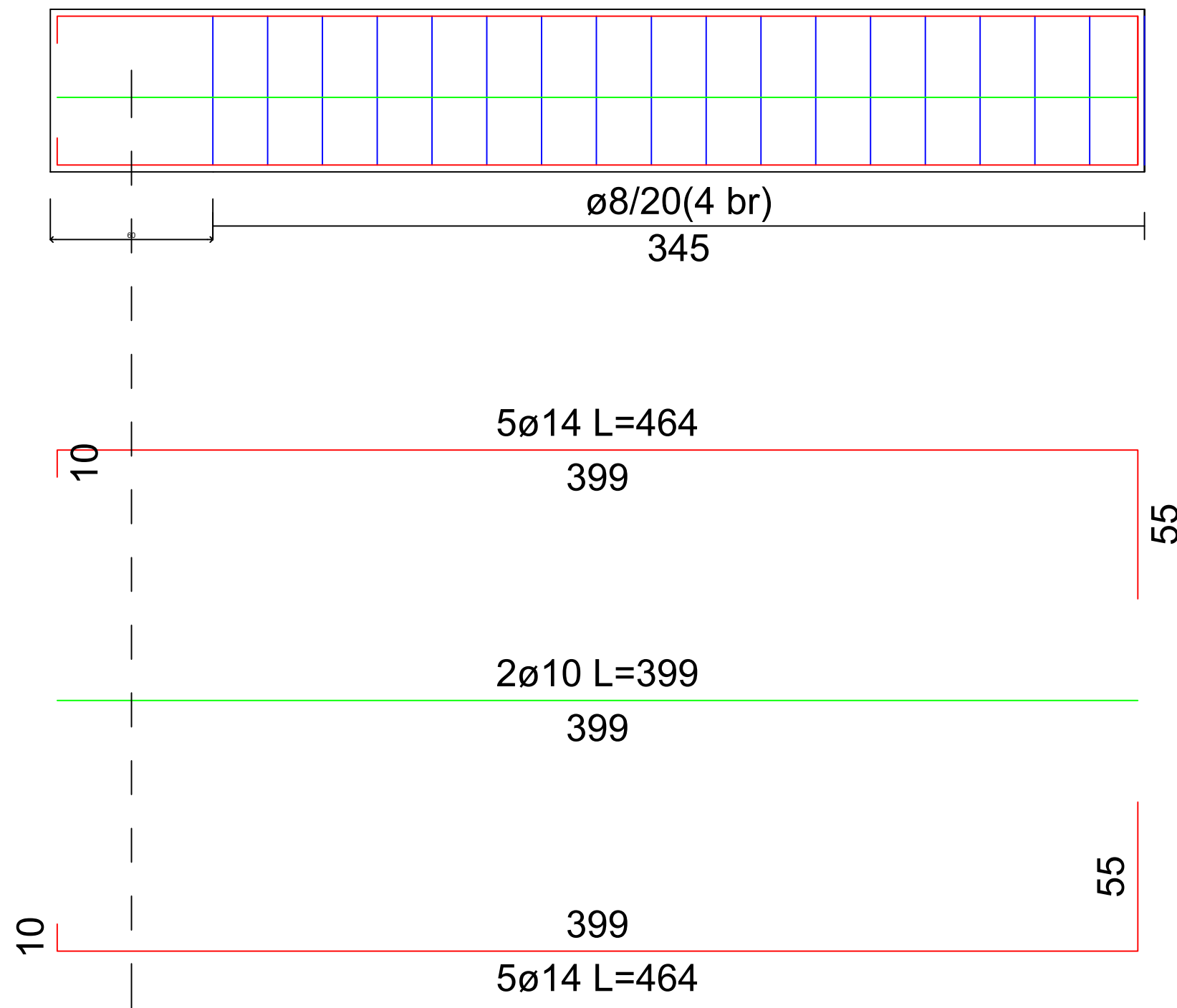
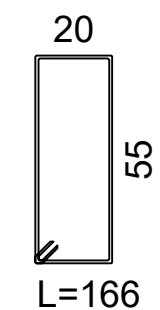
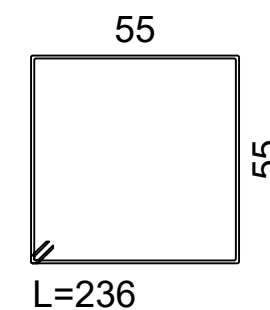
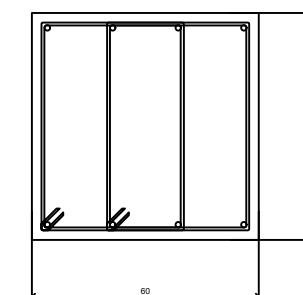
8



Campata 7-8

Cls =C25/30

Acciaio =B450C



Scala 1:20

Comune di PALAZZO ADRIANO

Provincia di PALERMO

ESECUTIVI DI CANTIERE

TRAVI Primo piano

Oggetto: PROGETTO PER IL MIGLIORAMENTO DEL PAESAGGIO CULTURALE URBANO
DELLE TRE CITTÀ DELLE ATTRAVERSO IL RESTAURO DELLE 24 FONTANE
EL'ADEGUAMENTO SISMICO DI UN EDIFICIO COMUNALE DA DESTINARE
A CENTRO DI MICRO RACCOLTA DELLE FRAZIONI DIFFERENZIALI DEI R.U.S.

Ditta: Comune di Palazzo Adriano

Data: 09/08/2019

Materiali

CLS
C25/30
ACCIAIO LONGITUDINALI
B450C
ACCIAIO STAFFE
B450C

Il Progettista
Arch Giovanni Speranza

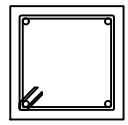
Il Direttore dei lavori

Il Calcolatore
Arch Giovanni Speranza

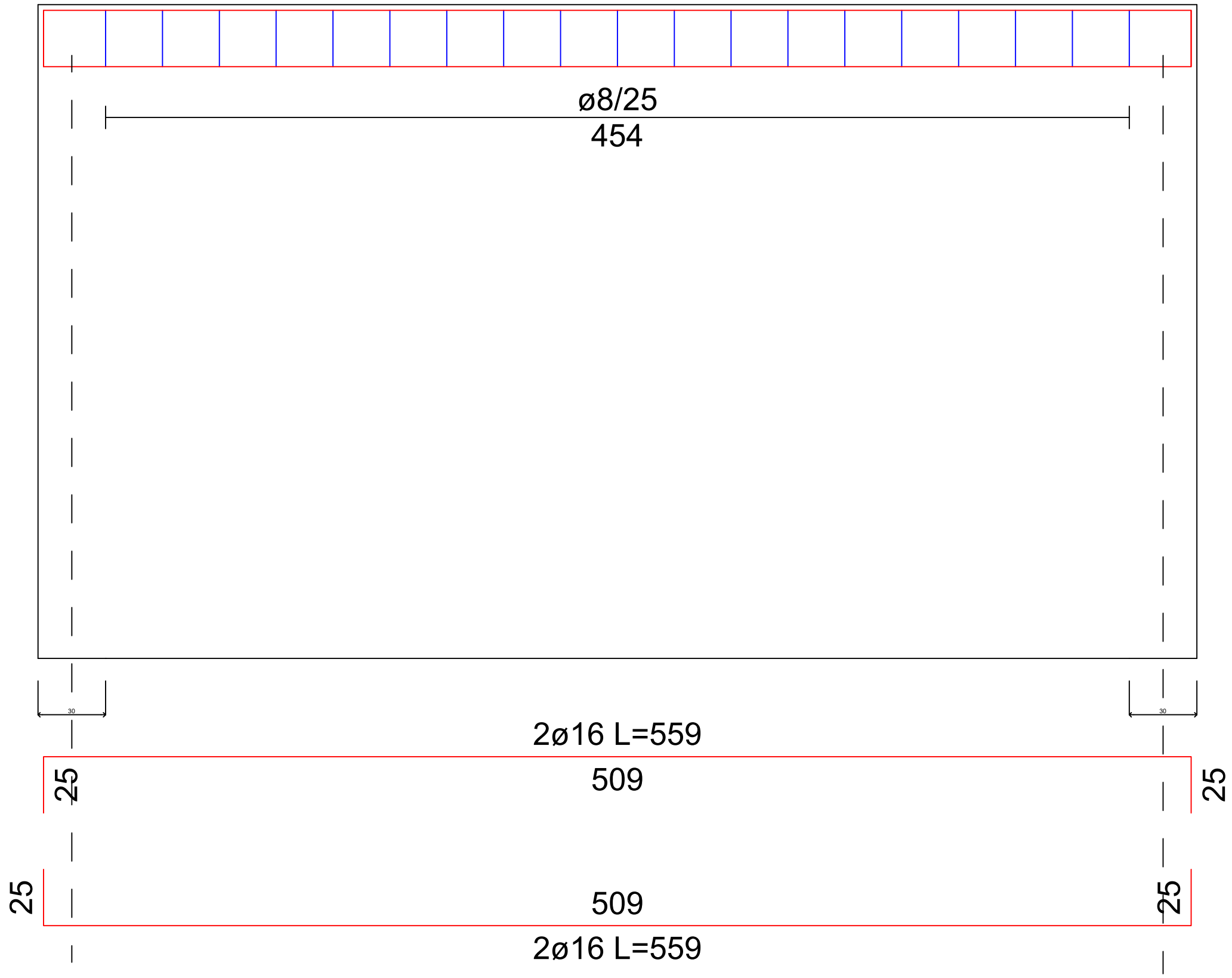


Travata 11 Primo piano

6
Q=290



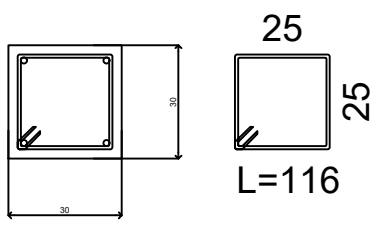
2
Q=290



Campata 6-2

Cls =C25/30

Acciaio =B450C



Scala 1:20

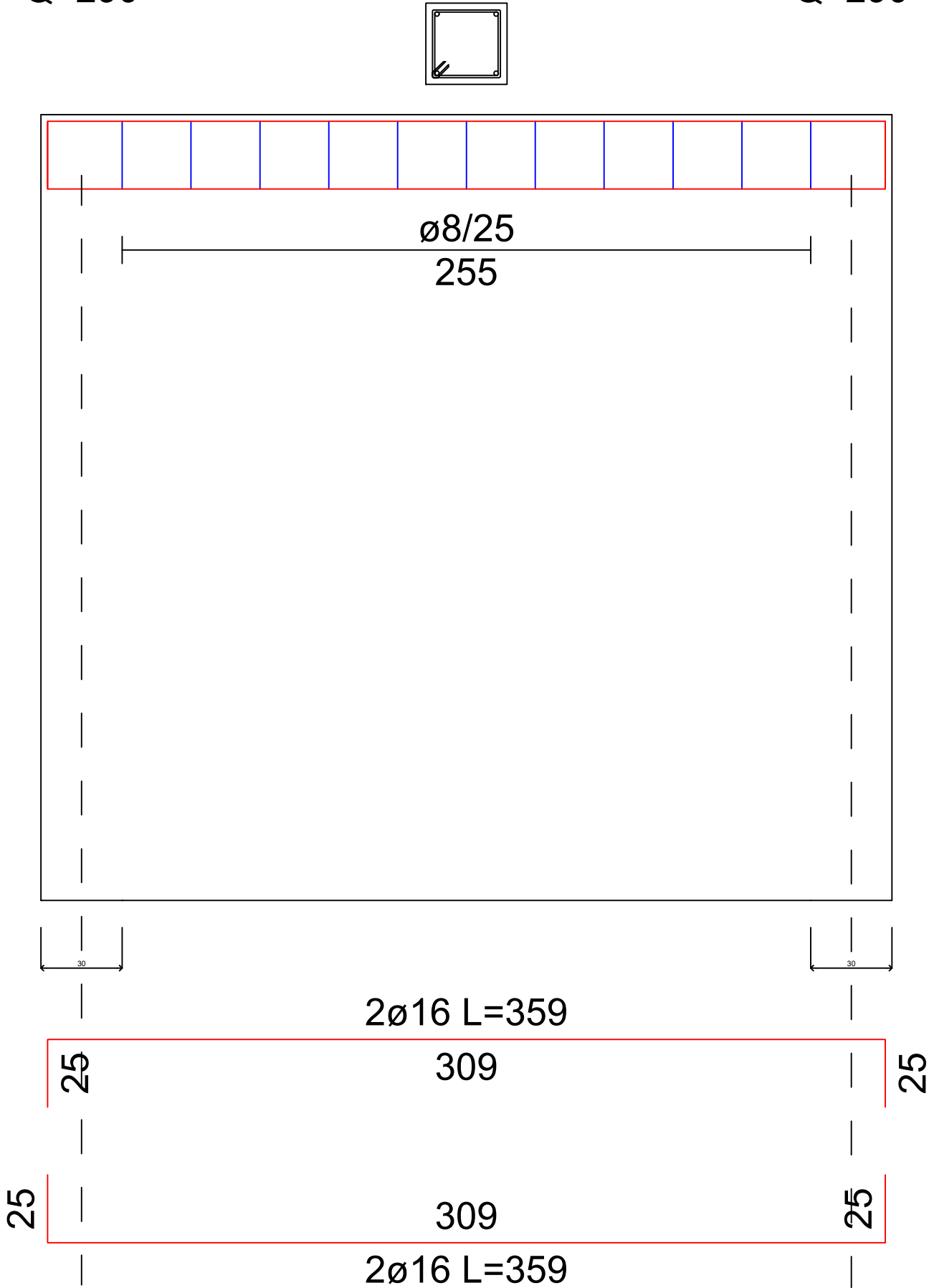
9

Q=290

Travata 12 Primo piano

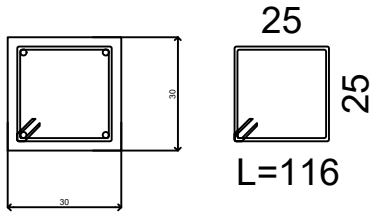
2

Q=290



Campata 9-2
Cls =C25/30

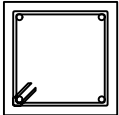
Acciaio =B450C



Scala 1:20

Travata 13 Primo piano

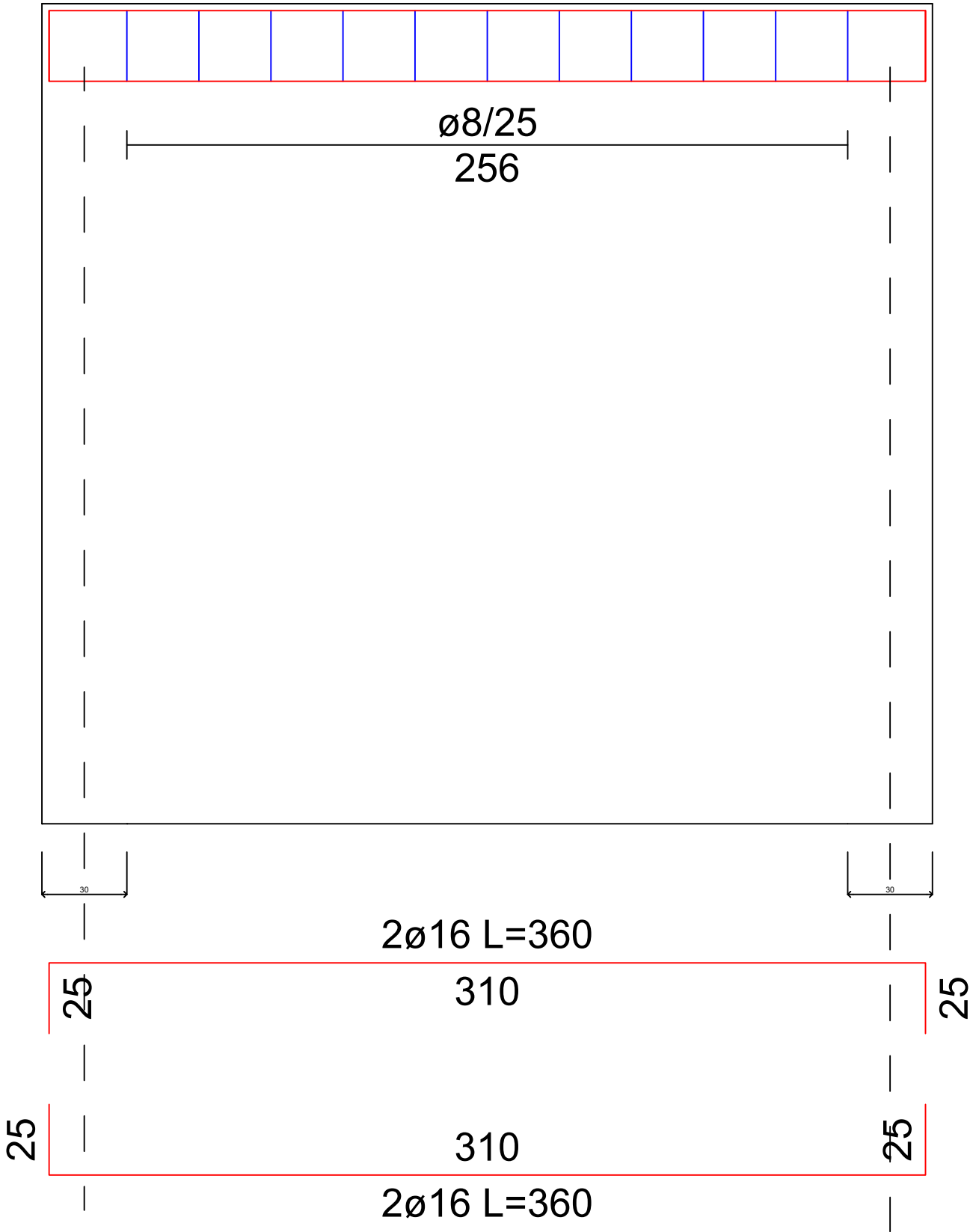
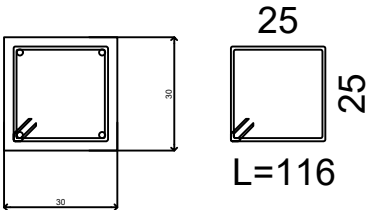
8
Q=290



6
Q=290

Campata 8-6
Cls =C25/30

Acciaio =B450C

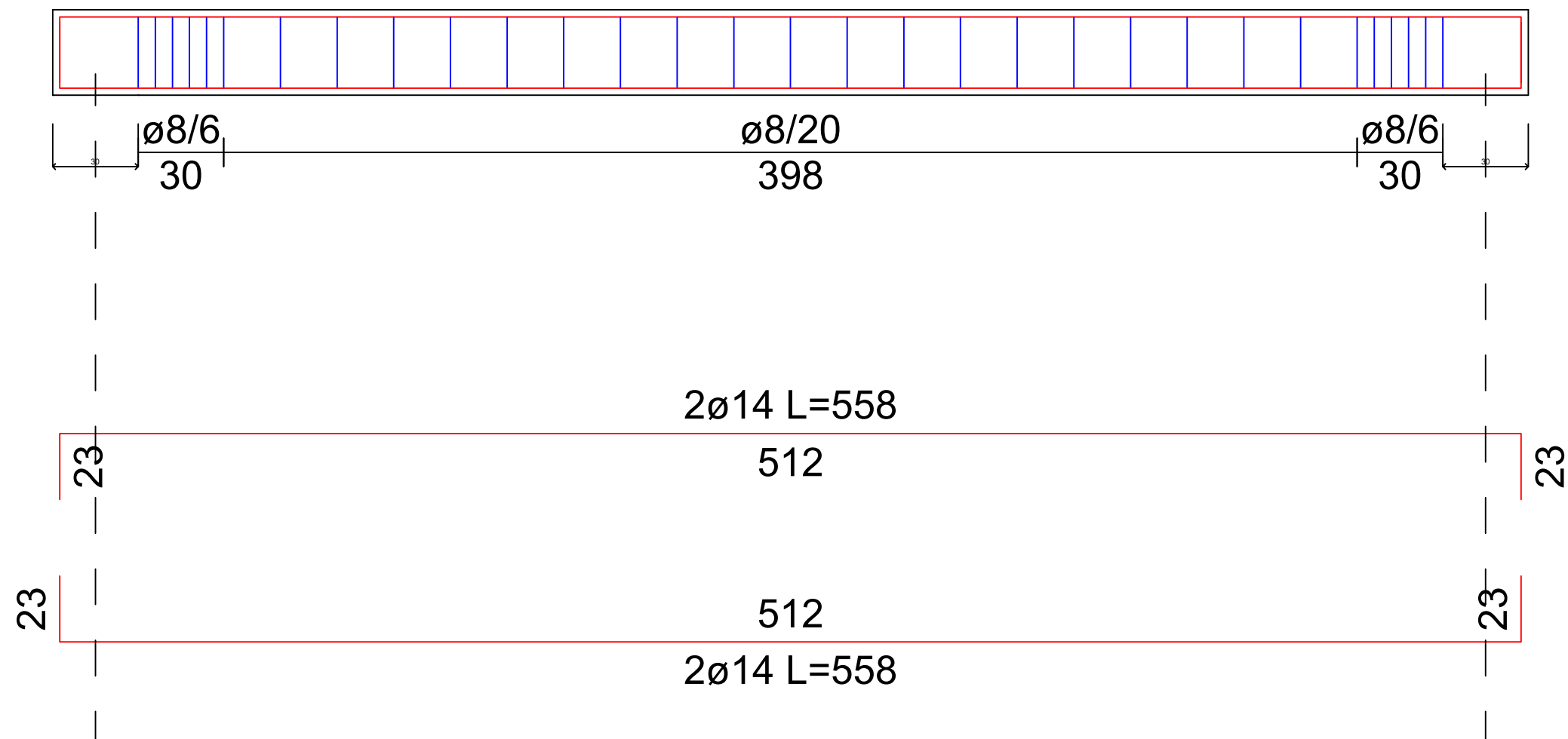
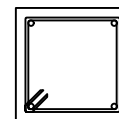


Scala 1:20

Travata 14 Primo piano

8
Q=290

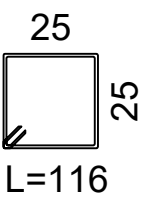
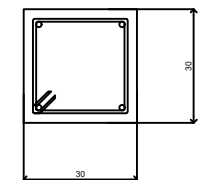
9
Q=290



Campata 8-9

Cl_s =C25/30

Acciaio =B450C



Scala 1:20

Comune di PALAZZO ADRIANO

Provincia di PALERMO

ESECUTIVI DI CANTIERE

TRAVI Sottotetto

Oggetto: PROGETTO PER IL MIGLIORAMENTO DELPAESAGGIO CULTURALE URBANO
DELLE TRE CITTADELLE ATTRAVERSO IL RESTAURO DELLE 24 FONTANE
EL'ADEGUAMENTO SISMICO DI UN EDIFICIO COMUNALE DA DESTINARE
A CENTRO DI MICRO RACCOLTA DELLE FRAZIONI DIFFERENZIALI DEI R.U.S.

Ditta: Comune di Palazzo Adriano

Data: 09/08/2019

Materiali

CLS
C25/30
ACCIAIO LONGITUDINALI
B450C
ACCIAIO STAFFE
B450C

Il Progettista
Arch Giovanni Speranza

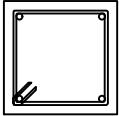
Il Direttore dei lavori



Il Calcolatore
Arch Giovanni Speranza

Travata 15 Sottotetto

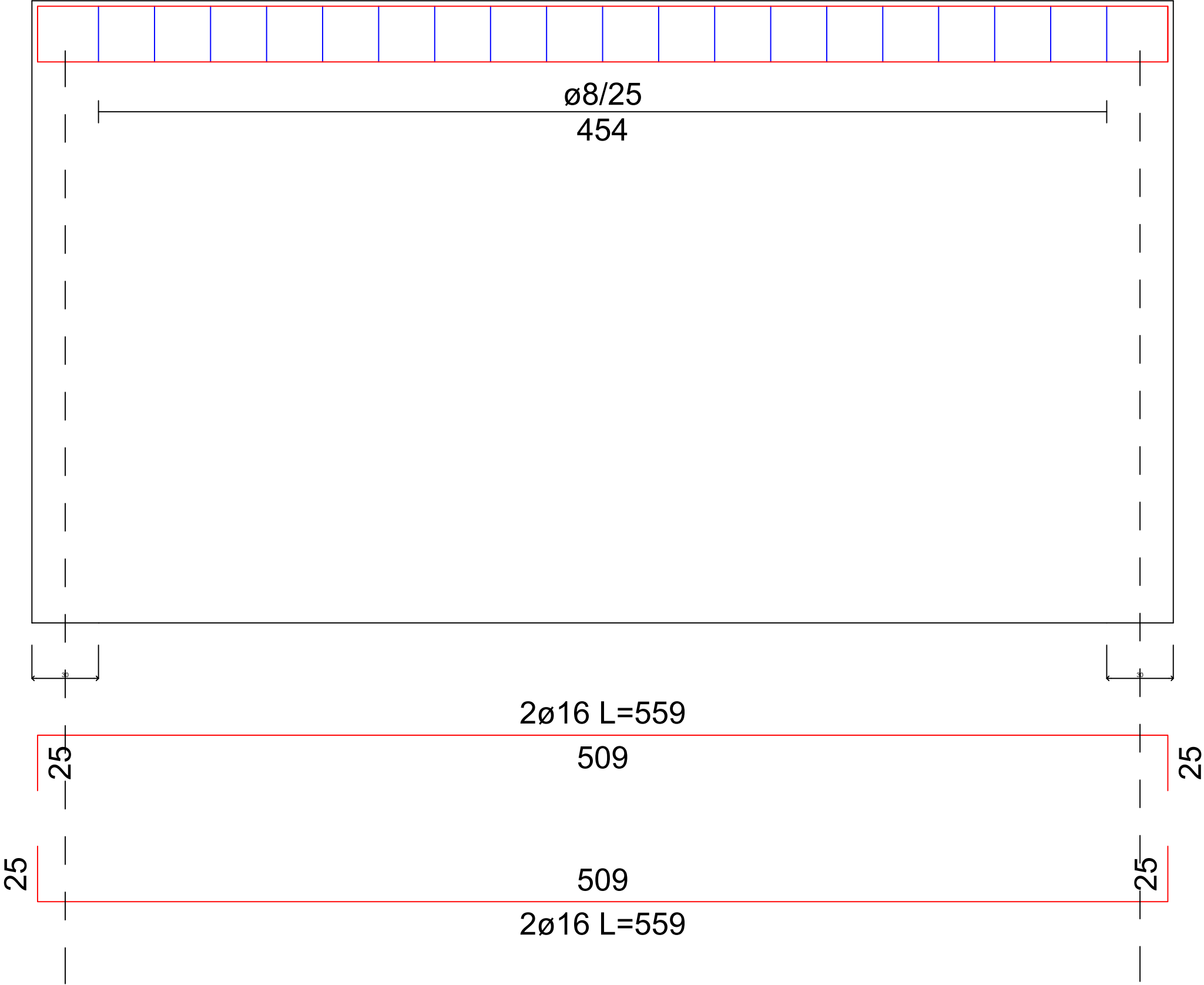
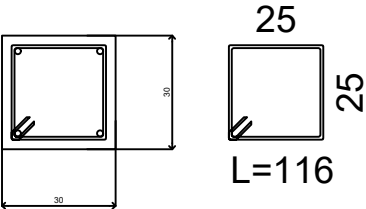
6
Q=570



2
Q=570

Campata 6-2
Cls =C25/30

Acciaio =B450C

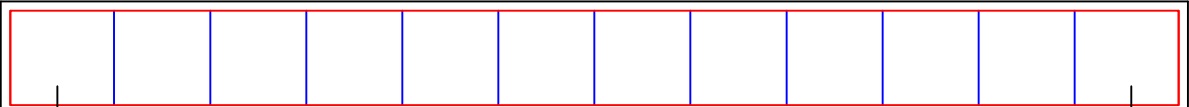
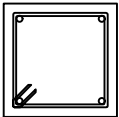


Scala 1:20

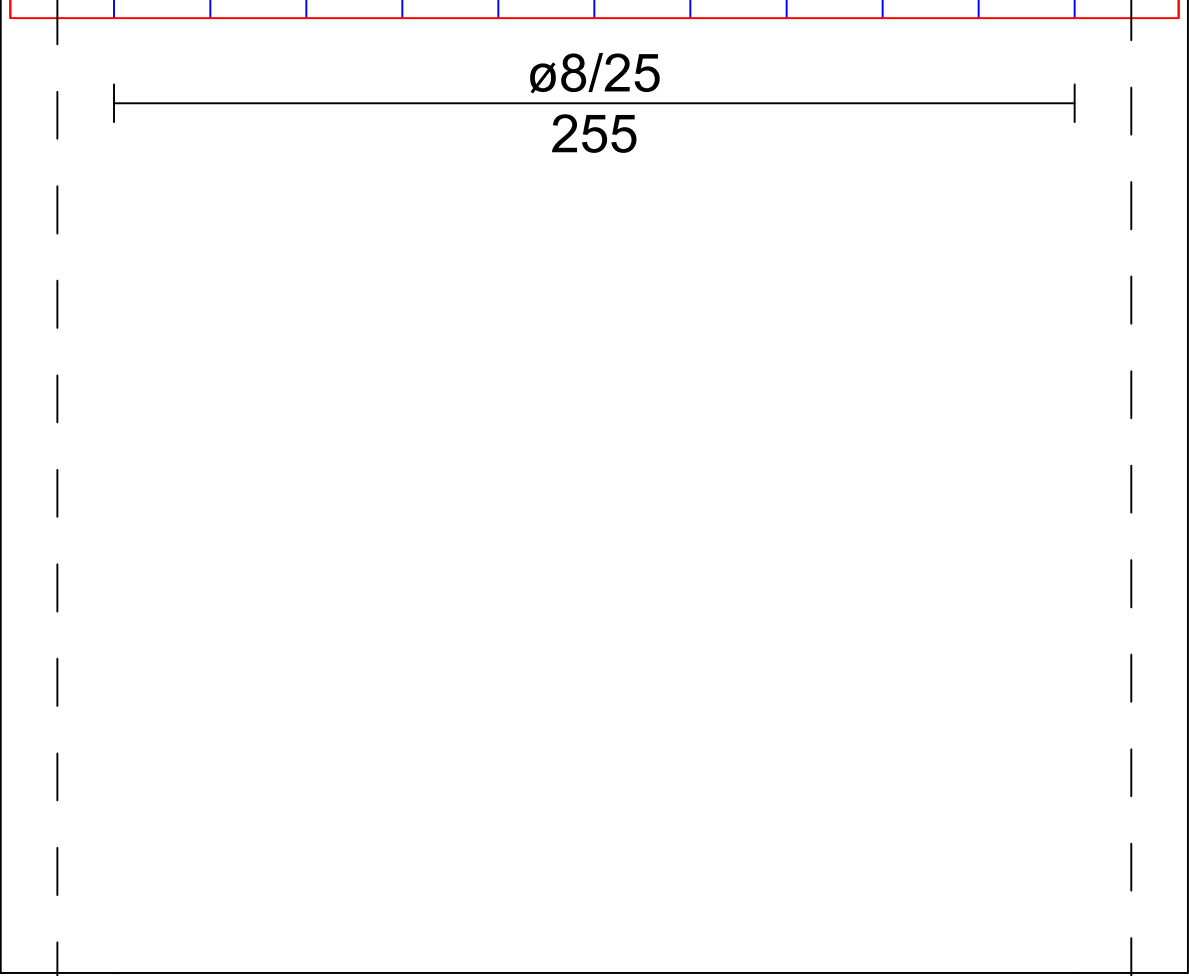
Travata 16 Sottotetto

9
Q=570

2
Q=570



ø8/25
255



2ø16 L=359

25

309

25

25

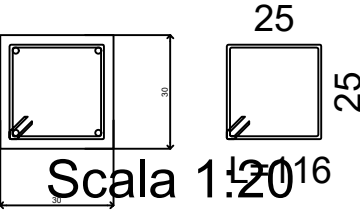
309

25

2ø16 L=359

Campata 9-2
Cls =C25/30

Acciaio =B450C



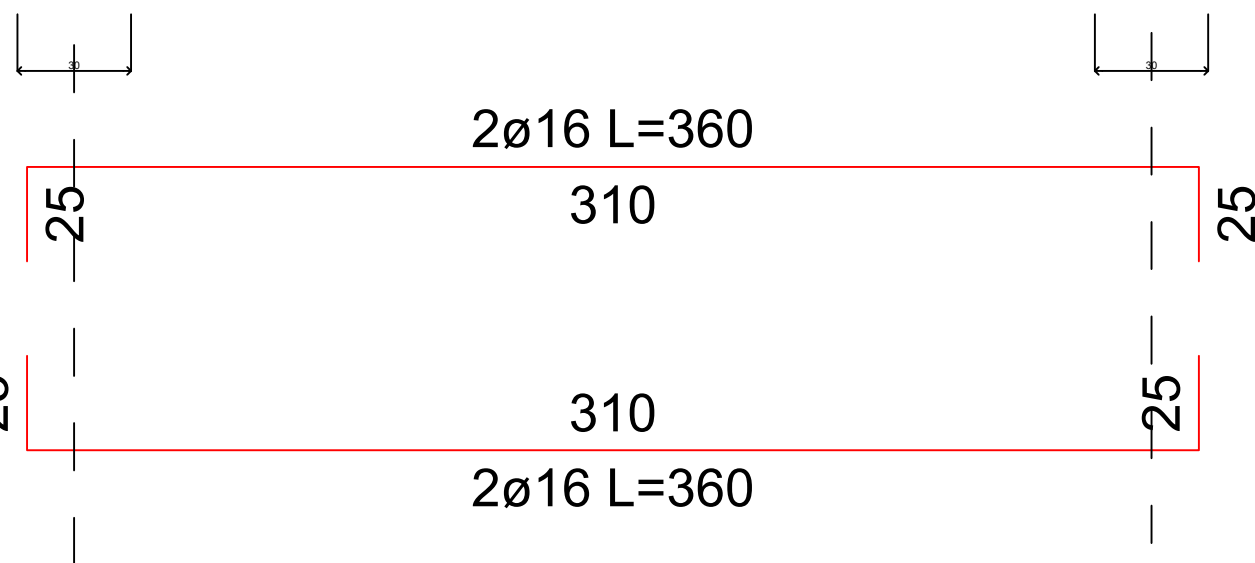
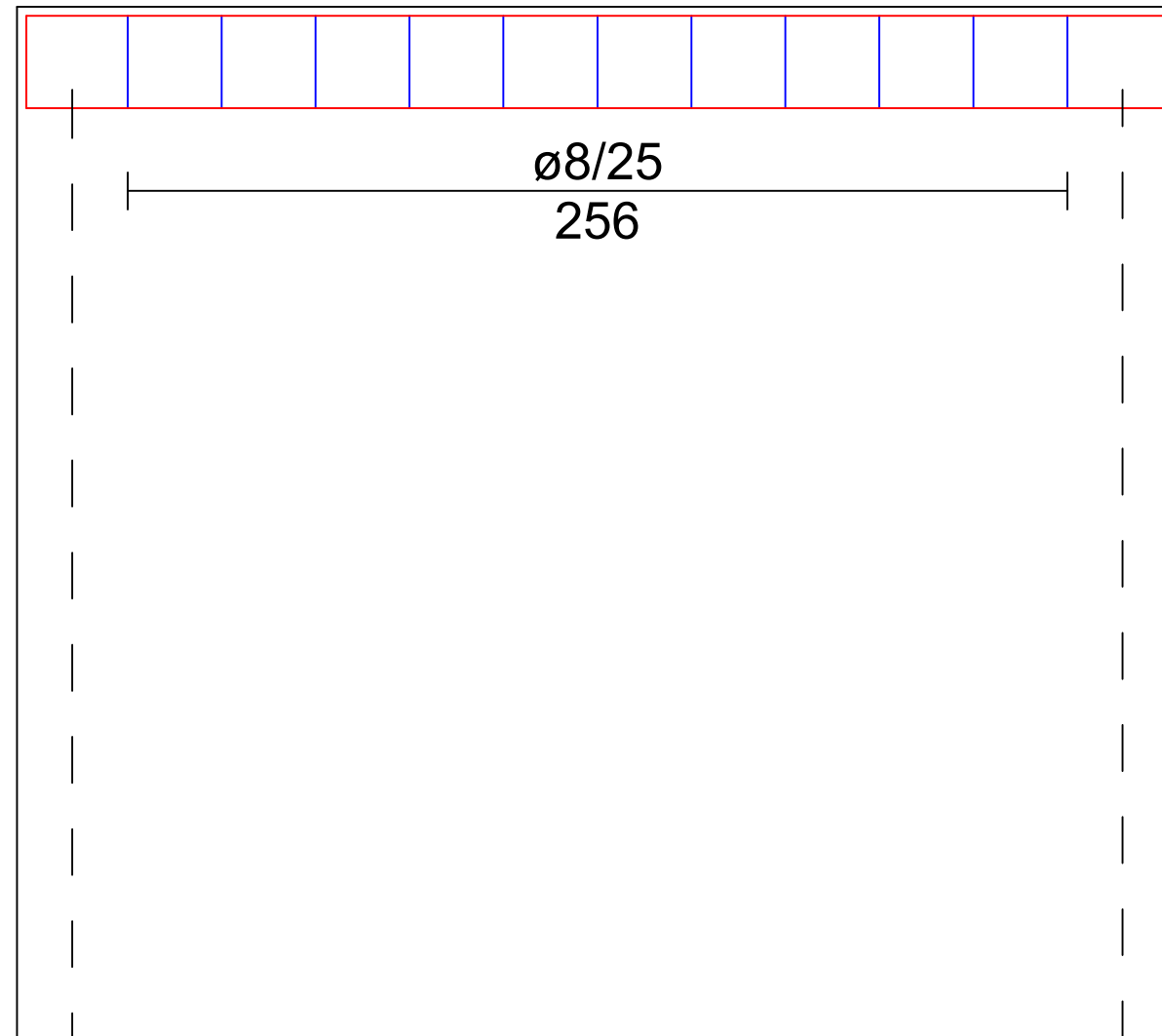
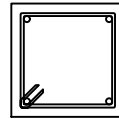
Scala 1:20

Scala 1:20

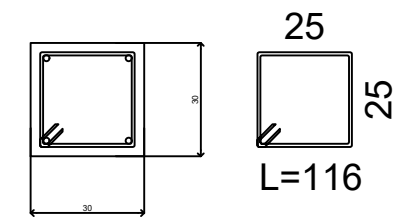
8
Q=570

Travata 17 Sottotetto

6
Q=570



Campata 8-6
Cls =C25/30
Acciaio =B450C

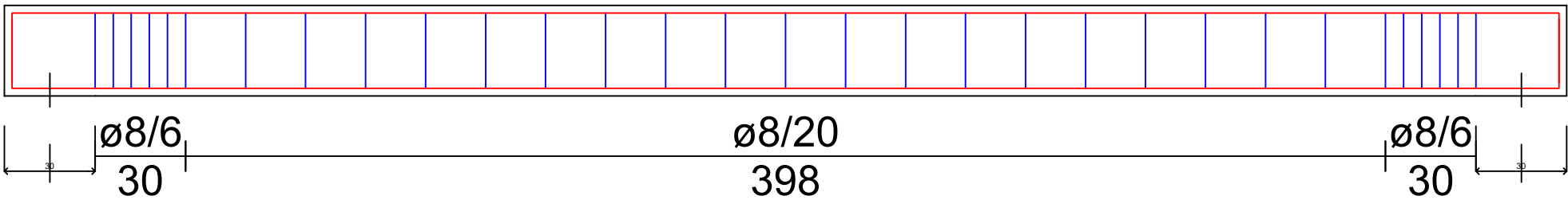
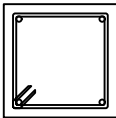


Scala 1:20

Travata 18 Sottotetto

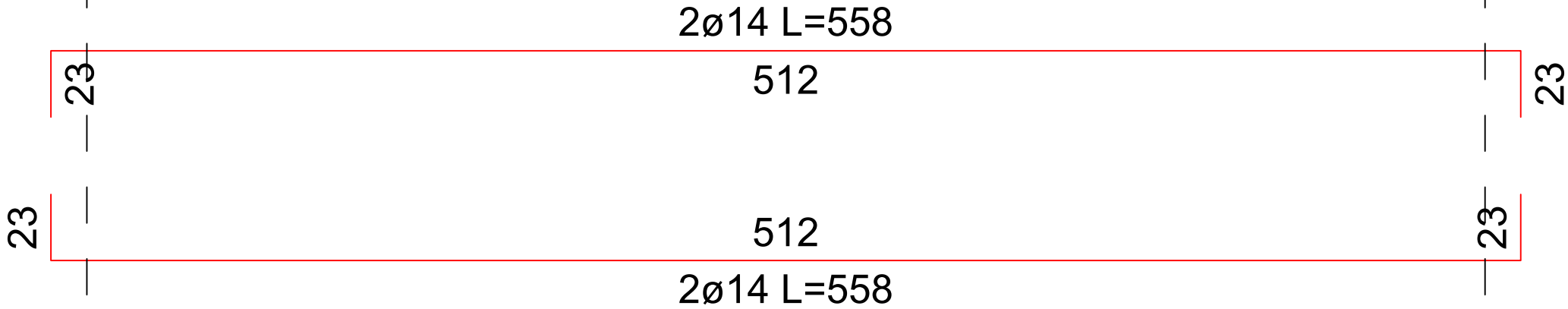
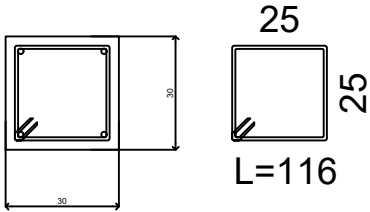
8
Q=570

9
Q=570



Campata 8-9
Cls =C25/30

Acciaio =B450C



Scala 1:20

Comune di PALAZZO ADRIANO

Provincia di PALERMO

ESECUTIVI DI CANTIERE

TRAVI Copertura quota inf.

Oggetto: PROGETTO PER IL MIGLIORAMENTO DEL PAESAGGIO CULTURALE URBANO
DELLE TRE CITTÀ DELLE ATTRAVERSO IL RESTAURO DELLE 24 FONTANE
EL'ADEGUAMENTO SISMICO DI UN EDIFICIO COMUNALE DA DESTINARE
A CENTRO DI MICRO RACCOLTA DELLE FRAZIONI DIFFERENZIALI DEI R.U.S.

Ditta: Comune di Palazzo Adriano

Data: 09/08/2019

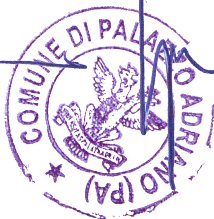
Materiali

CLS
C25/30
ACCIAIO LONGITUDINALI
B450C
ACCIAIO STAFFE
B450C

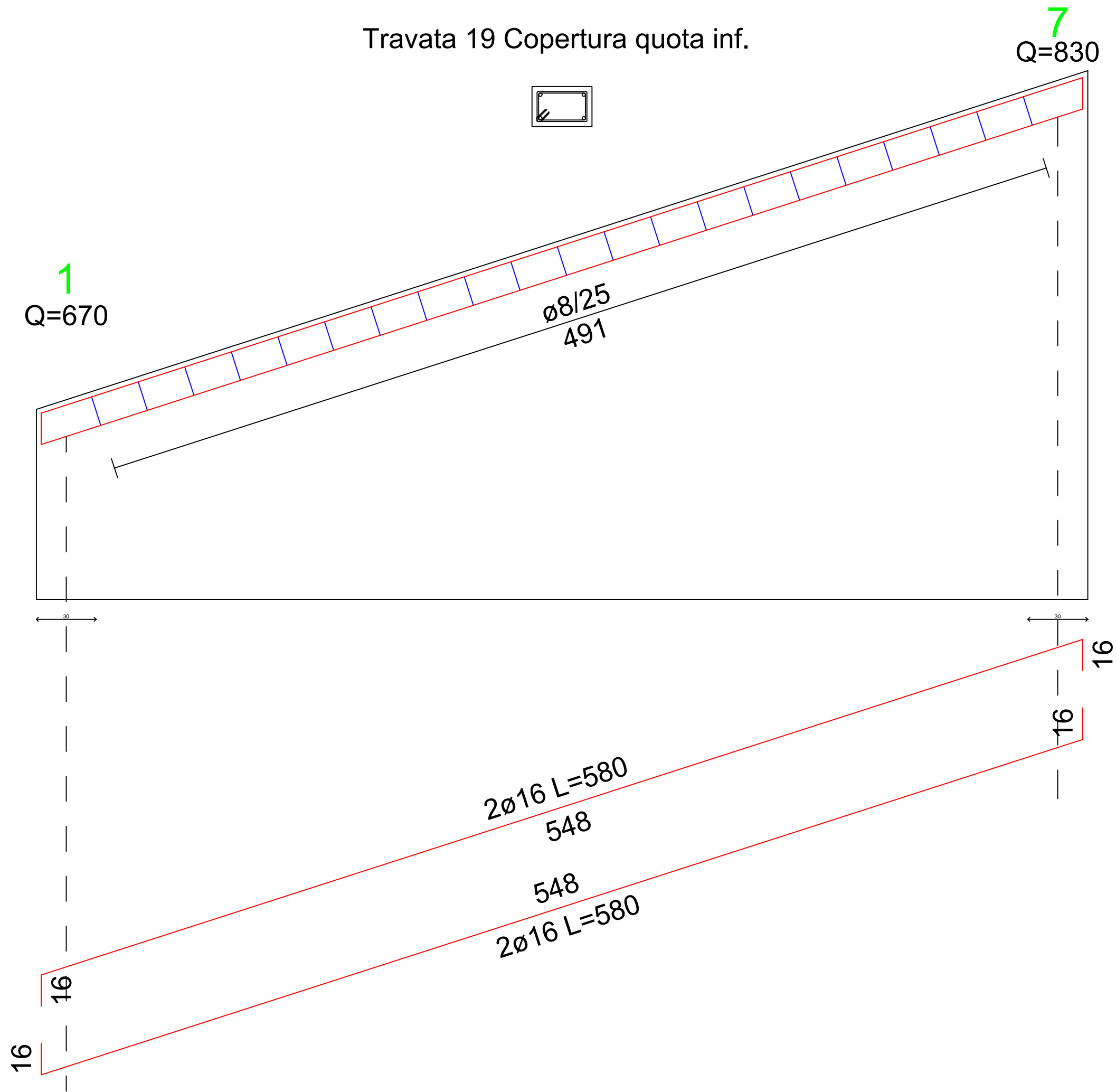
Il Progettista
Arch Giovanni Speranza

Il Direttore dei lavori

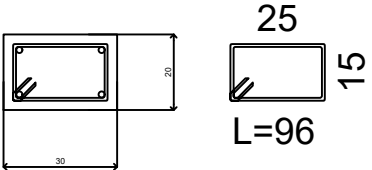
Il Calcolatore
Arch Giovanni Speranza



Travata 19 Copertura quota inf.

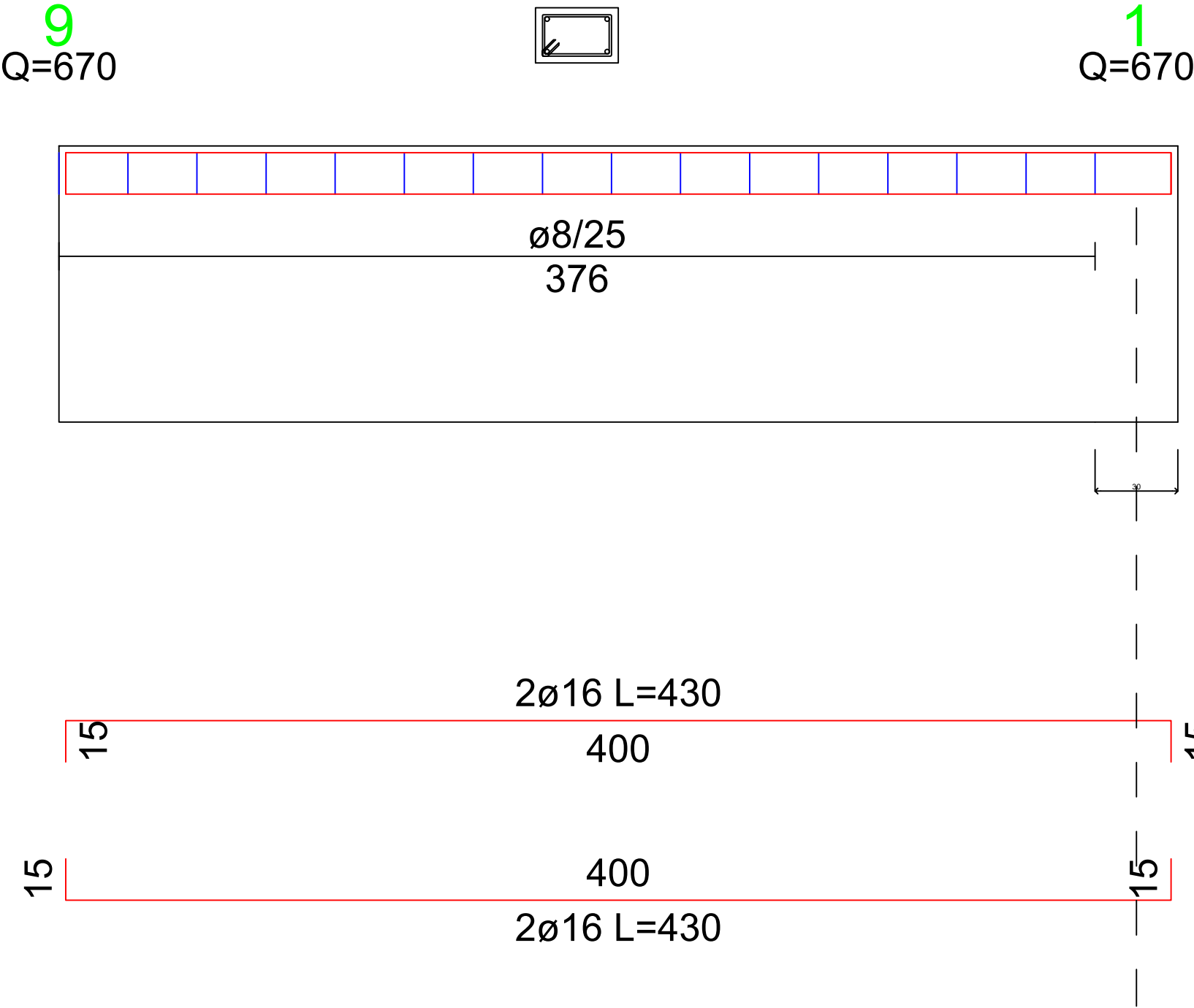


Campata 1-7
Cls =C25/30
Acciaio =B450C

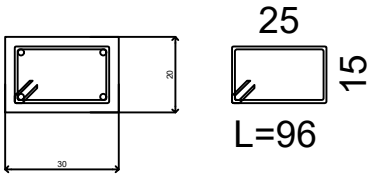


Scala 1:20

Travata 20 Copertura quota inf.

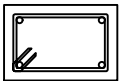


Campata 9-1
Cls =C25/30
Acciaio =B450C



Travata 24 Copertura quota inf.

7
Q=830

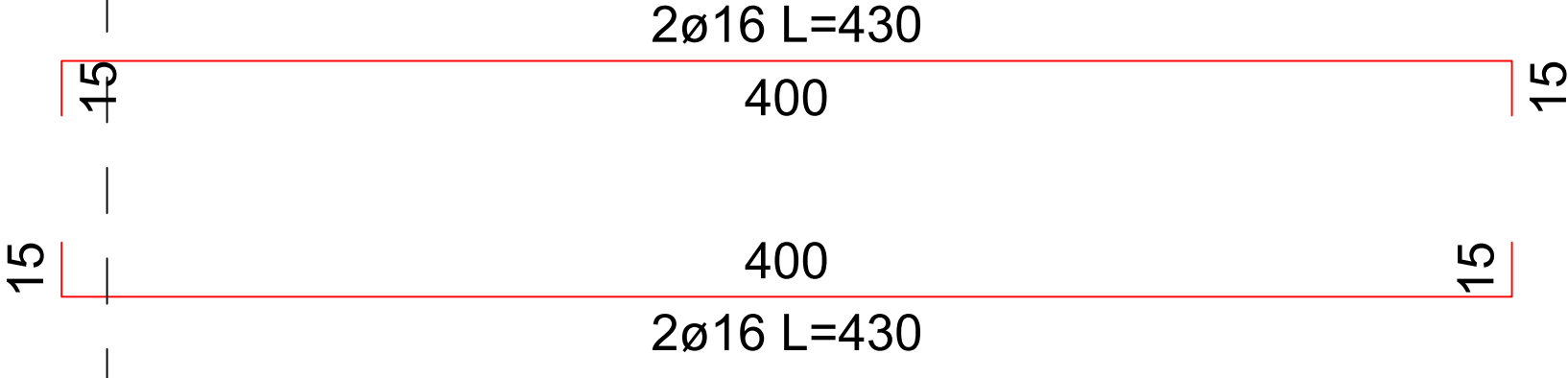
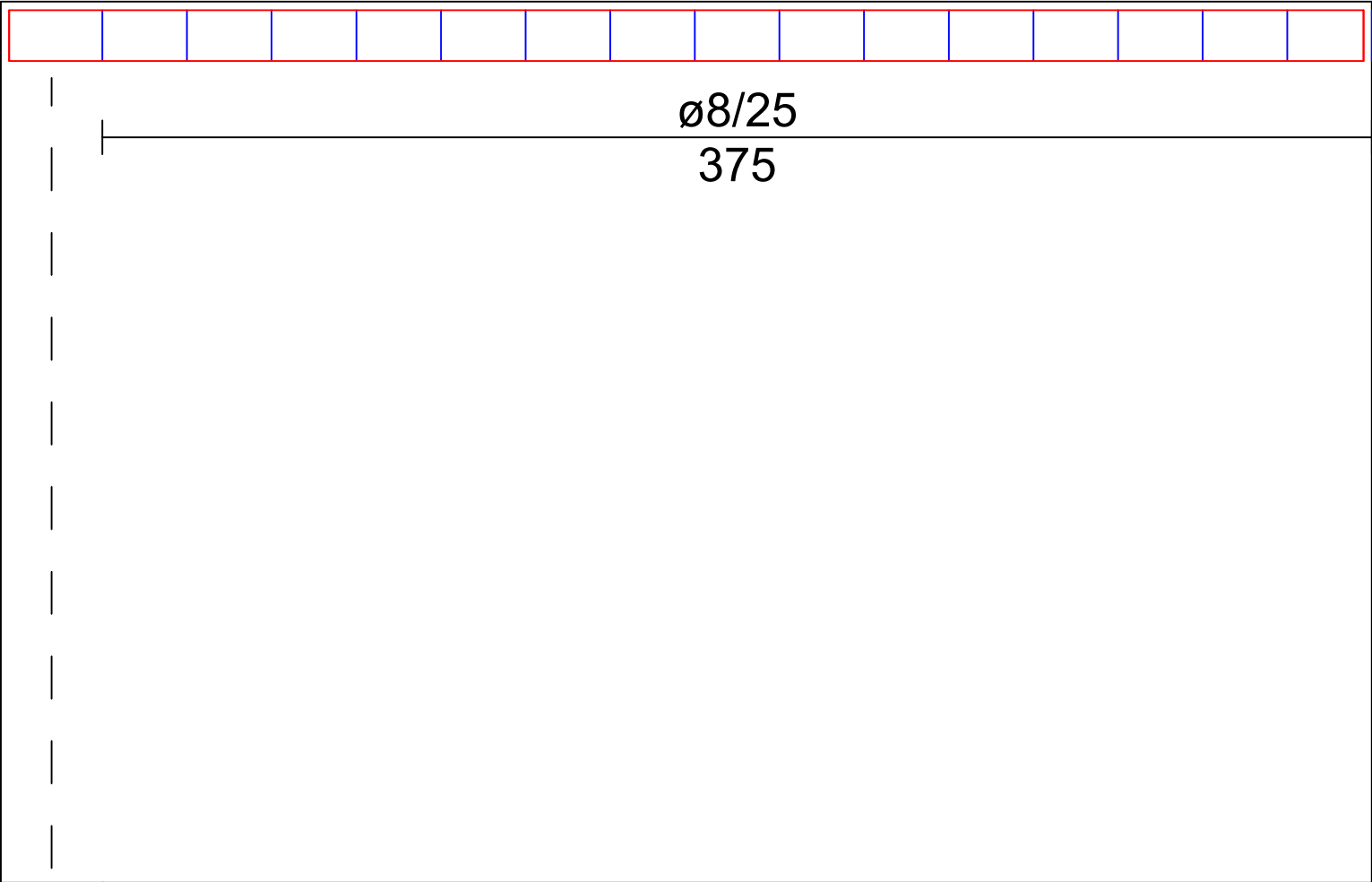
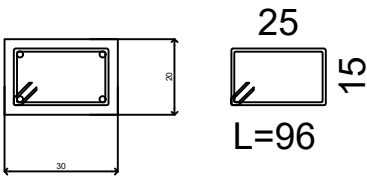


8
Q=830

Campata 7-8

Cl_s =C25/30

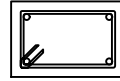
Acciaio =B450C



Scala 1:20

6
Q=830

Travata 21 Copertura quota inf.



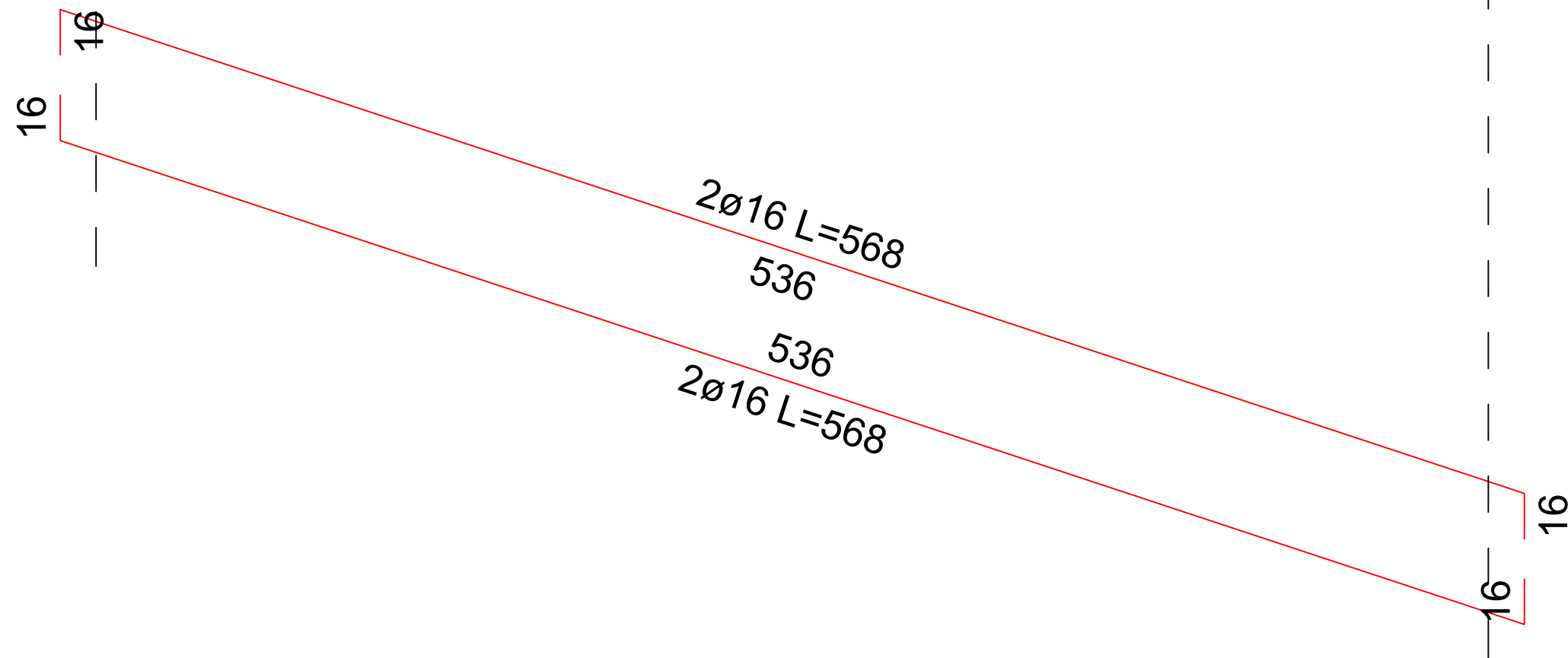
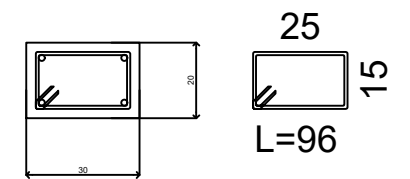
ø8/25
479

2
Q=670

Campata 6-2

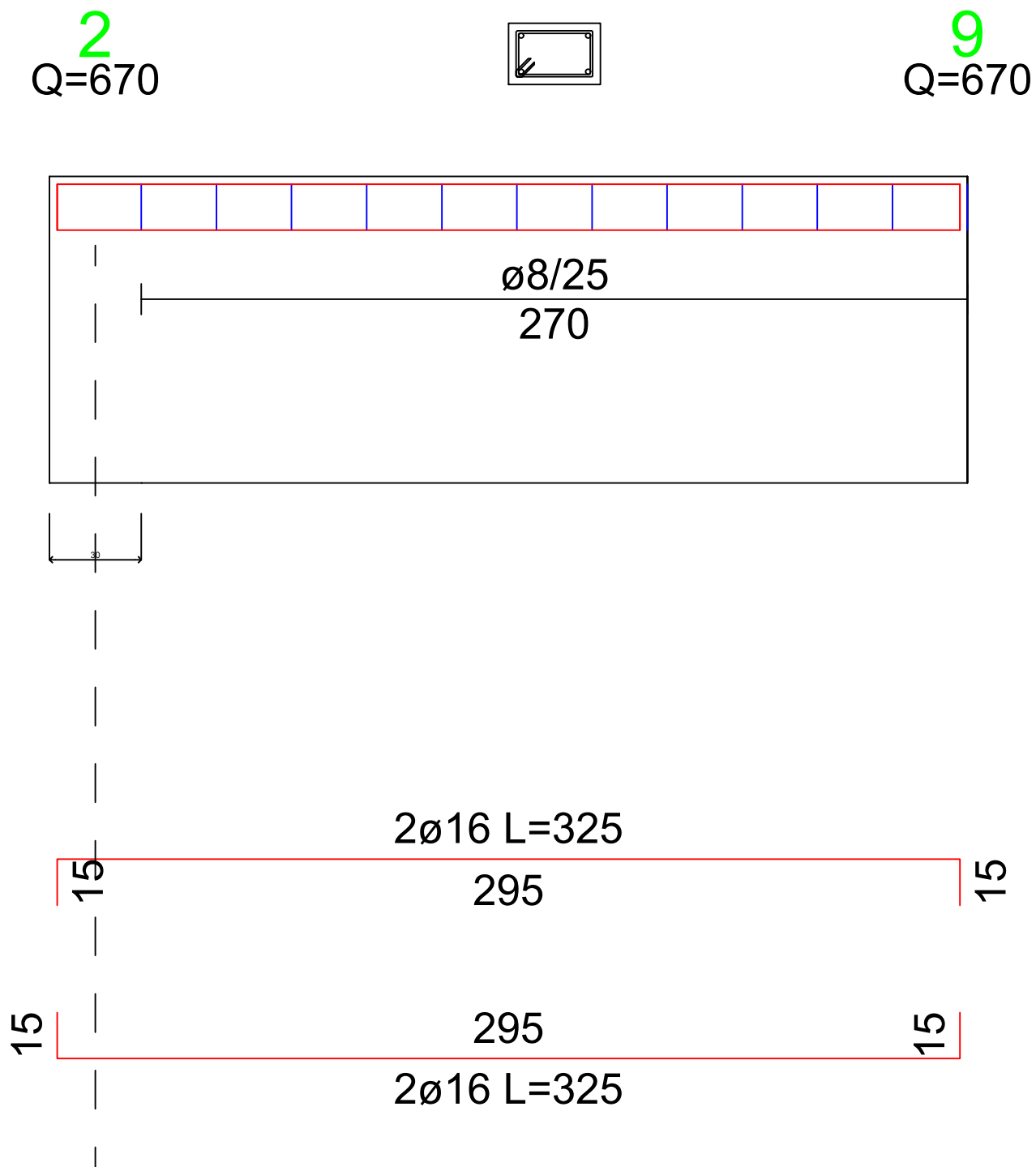
Cl_s = C25/30

Acciaio = B450C



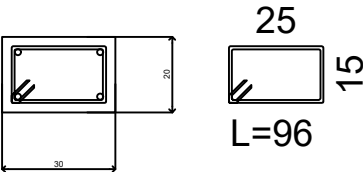
Scala 1:20

Travata 22 Copertura quota inf.

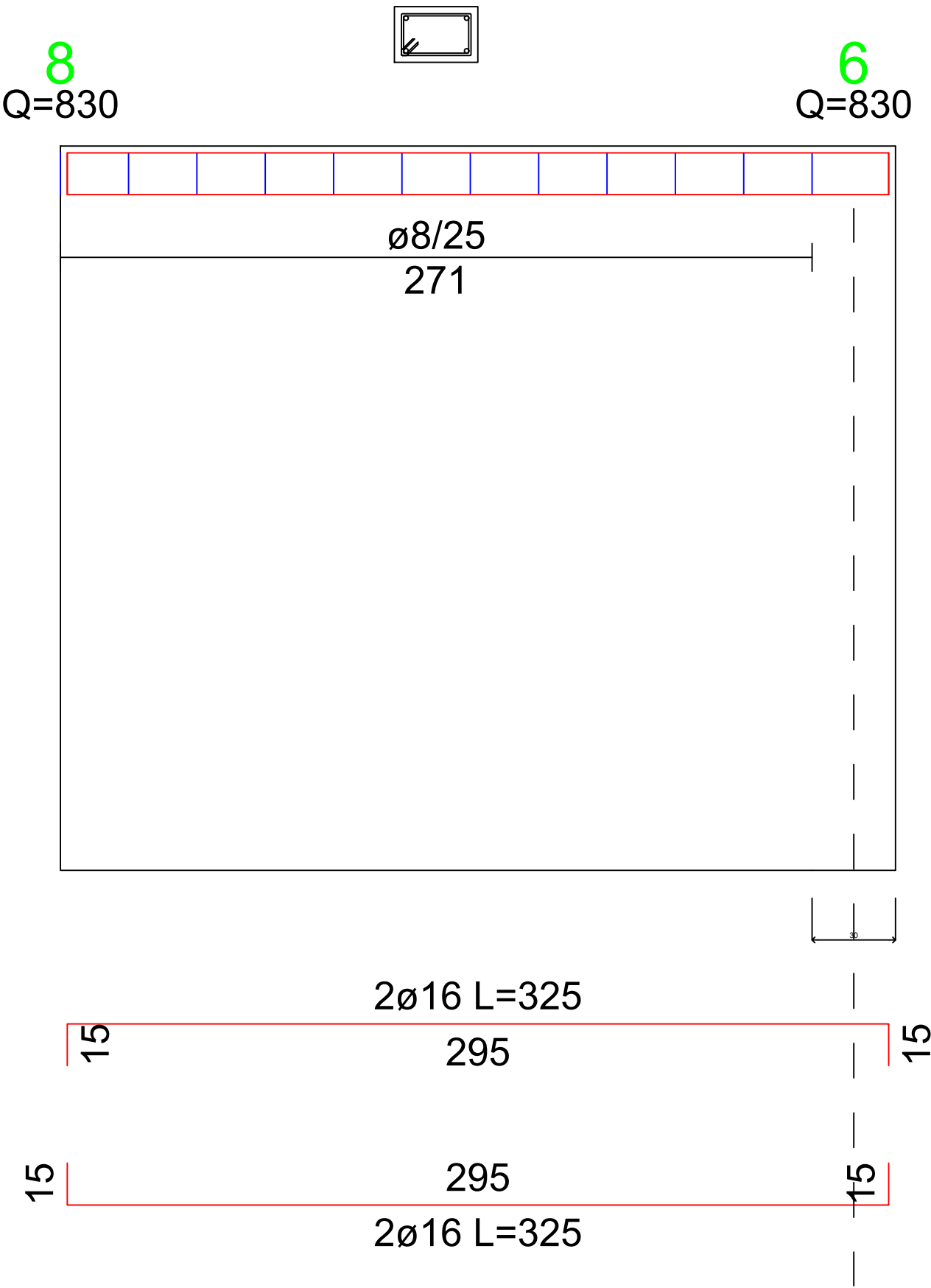


Campata 2-9
Cls =C25/30

Acciaio =B450C



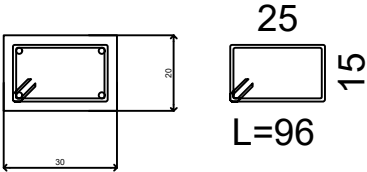
Travata 23 Copertura quota inf.



Campata 8-6

Cls =C25/30

Acciaio =B450C



Scala 1:20

Comune di PALAZZO ADRIANO

Provincia di PALERMO

ESECUTIVI DI CANTIERE

TRAVI Copertura quota sup.

Oggetto: PROGETTO PER IL MIGLIORAMENTO DEL PAESAGGIO CULTURALE URBANO
DELLE TRE CITTÀ DELLE ATTRAVERSO IL RESTAURO DELLE 24 FONTANE
EL'ADEGUAMENTO SISMICO DI UN EDIFICIO COMUNALE DA DESTINARE
A CENTRO DI MICRO RACCOLTA DELLE FRAZIONI DIFFERENZIALI DEI R.U.S.

Ditta: Comune di Palazzo Adriano

Data: 09/08/2019

Materiali

CLS
C25/30
ACCIAIO LONGITUDINALI
B450C
ACCIAIO STAFFE
B450C

Il Progettista
Arch Giovanni Speranza

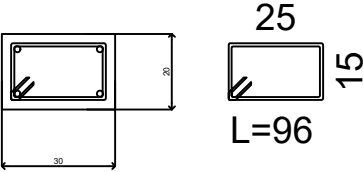
Il Direttore dei lavori



Il Calcolatore
Arch Giovanni Speranza

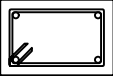
Travata 25 Copertura quota sup.

Campata 2-3
Cls =C25/30
Acciaio =B450C



2
Q=770

3
Q=770



ø8/25
636

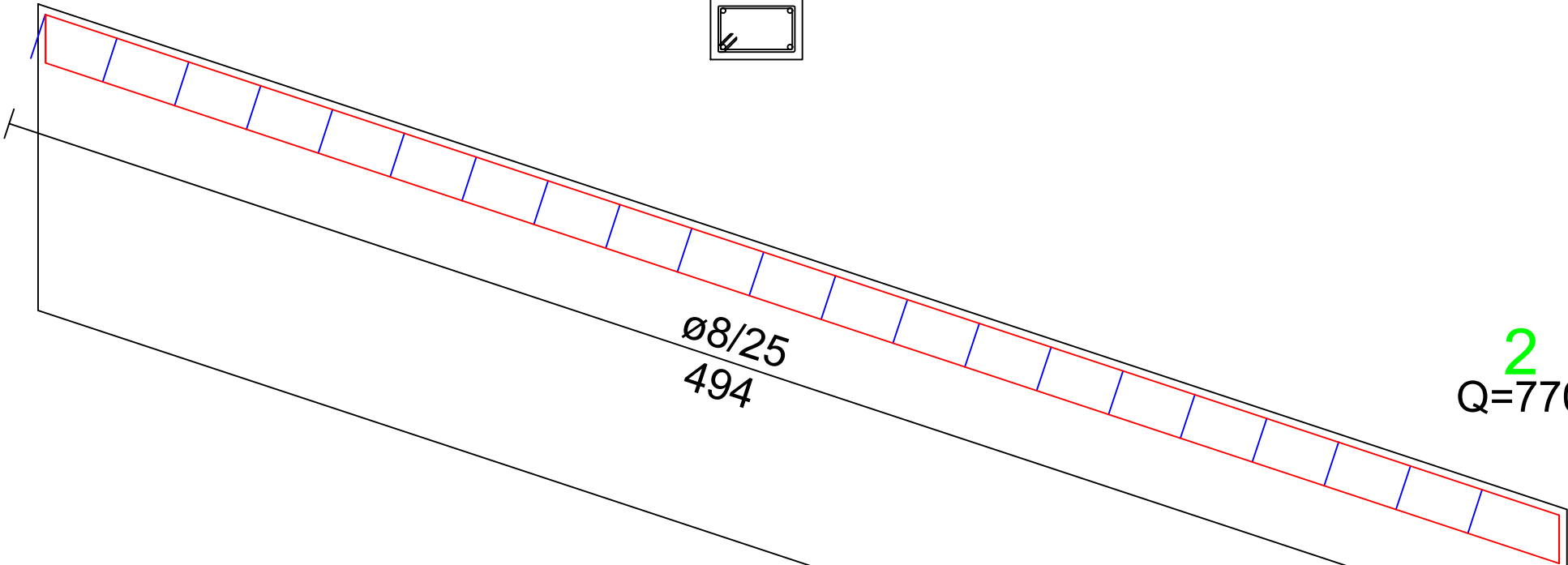
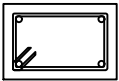
2ø16 L=721
691

691
2ø16 L=721

Scala 1:20

Travata 26 Copertura quota sup.

6
Q=930

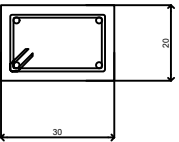


2
Q=770

Campata 6-2

Cls =C25/30

Acciaio =B450C



25
15
L=96

16

16

2Ø16 L=552
520

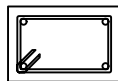
520
2Ø16 L=552

16

16

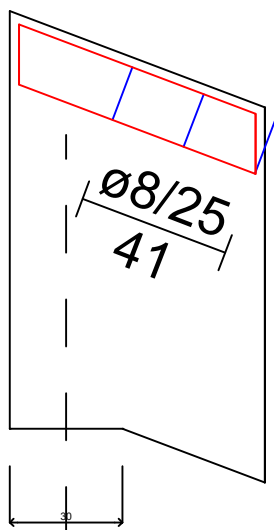
Scala 1:20

Travata 29 Copertura quota sup.



5
Q=950

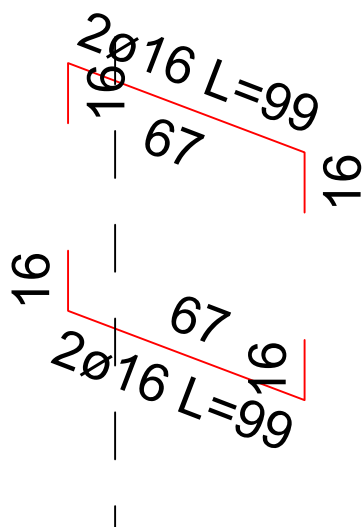
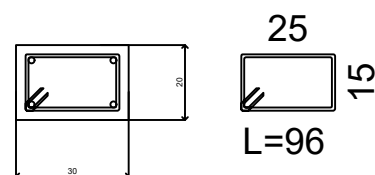
6
Q=930



Campata 5-6

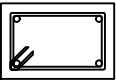
Cl_s = C25/30

Acciaio = B450C



Scala 1:20

Travata 27 Copertura quota sup.



ø8/25
588

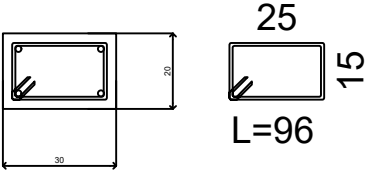
3
Q=770

4
Q=950

Campata 3-4

Cl_s = C25/30

Acciaio = B450C



2ø16 L=677
645

645
2ø16 L=677

16

16

16

16

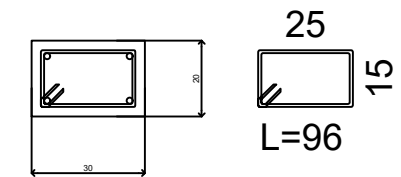
Scala 1:20

Travata 28 Copertura quota sup.

Campata 4-5

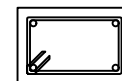
Cls =C25/30

Acciaio =B450C



4
Q=950

5
Q=950



ø8/25
644

2ø16 L=729
699

699
2ø16 L=729

Scala 1:20