



**Finanziato
dall'Unione europea**
NextGenerationEU



*Ministero dell'Istruzione
dell'Università e Ricerca*



**REGIONE
SICILIANA**



Comune di Pietraperzia

Libero Consorzio Comunale di Enna

PROGETTO DEFINITIVO ED ESECUTIVO

(redatto ai sensi dell'art.23 del D.Lgs 50/2016 e ss.mm.ii.)

**OGGETTO: "Interventi di messa in sicurezza e riqualificazione dell'edificio scolastico
G.Verga" CUP: J46F19000020001**



D. STRUTTURALE – INTERVENTI DI MESSA IN SICUREZZA

ELABORATO n. D.2.2)

RISULTATI GRAFICI CORPO A – STATO ATTUALE

Visti:

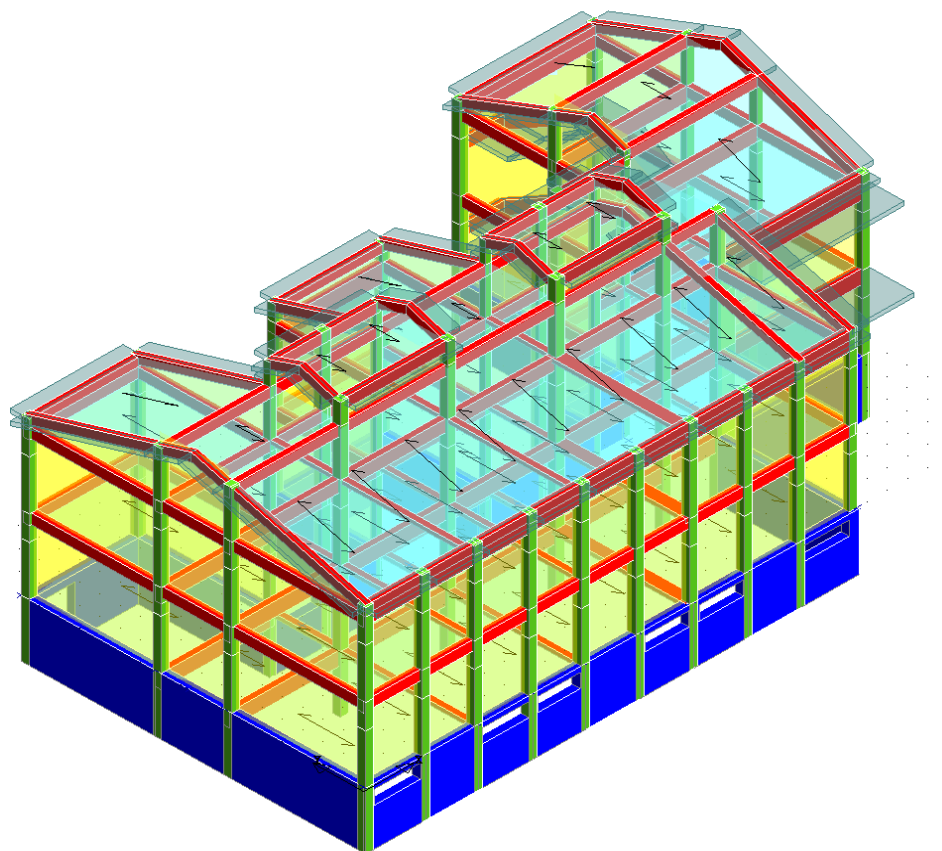
IL TECNICO
Arch. Sheila VINTI

IL RUP
Geom. Rocco BONGIOVANNI

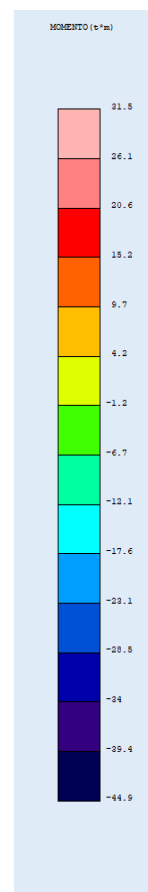
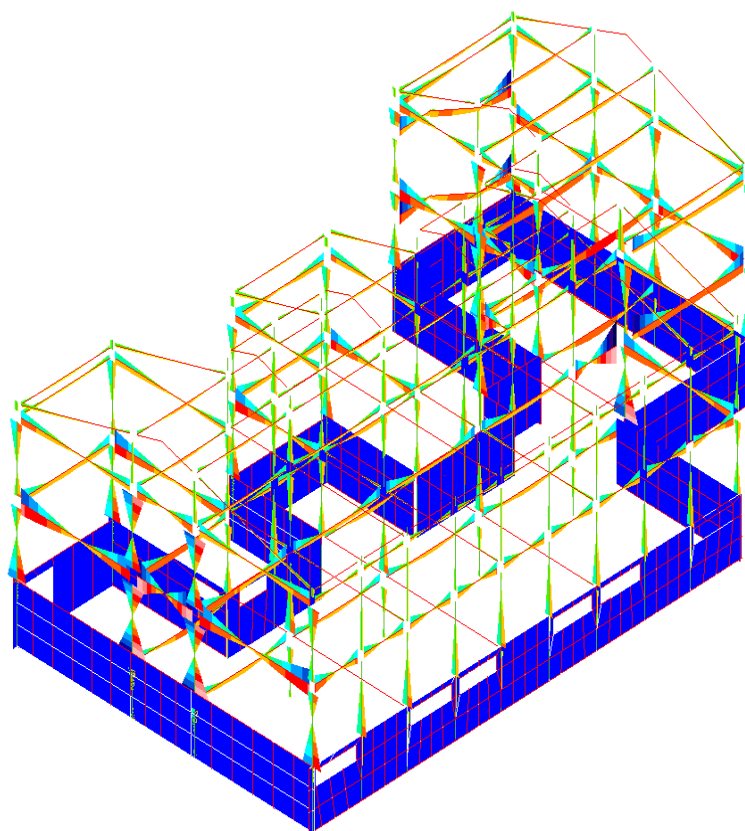
Pietraperzia li 24/09/2022

Arch. Sheila Vinti – Studio Tecnico Via S.Pertini n°34, 92020 Racalmuto (AG)
Mail: archsheilavinti@gmail.com – pec: archsheilavinti@archiworldpec.it

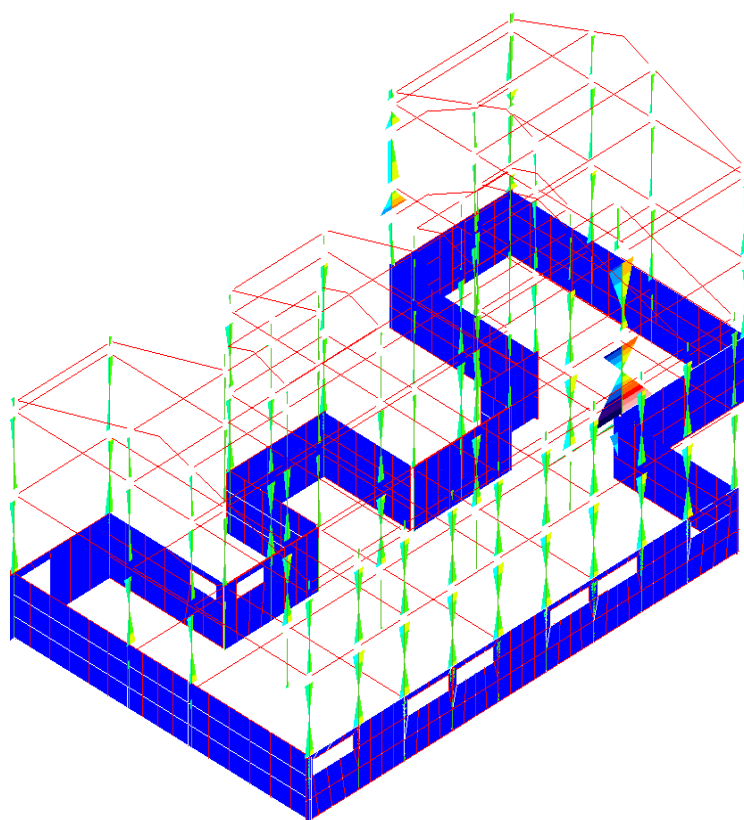
RAPPRESENTAZIONI GRAFICHE OUTPUT STRUTTURA



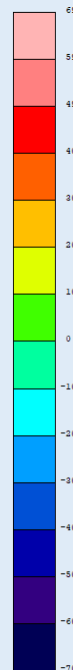
IMMAGINE



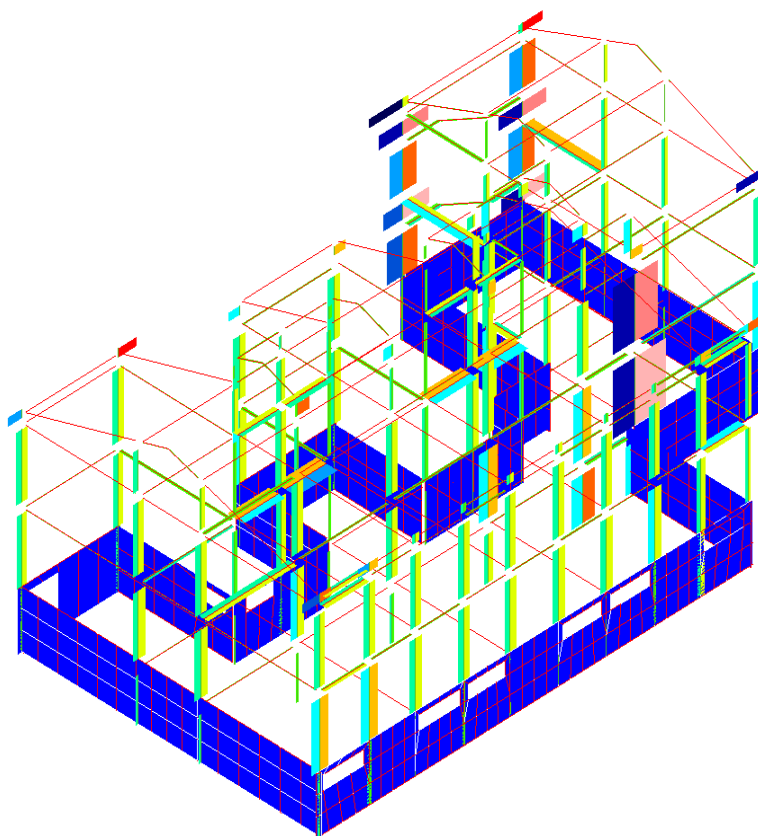
MOMENTO COMB.INVILUPPO X



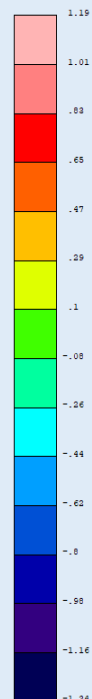
MOMENTO (kN/m)



MOMENTO COMB.INVILUPPO Y

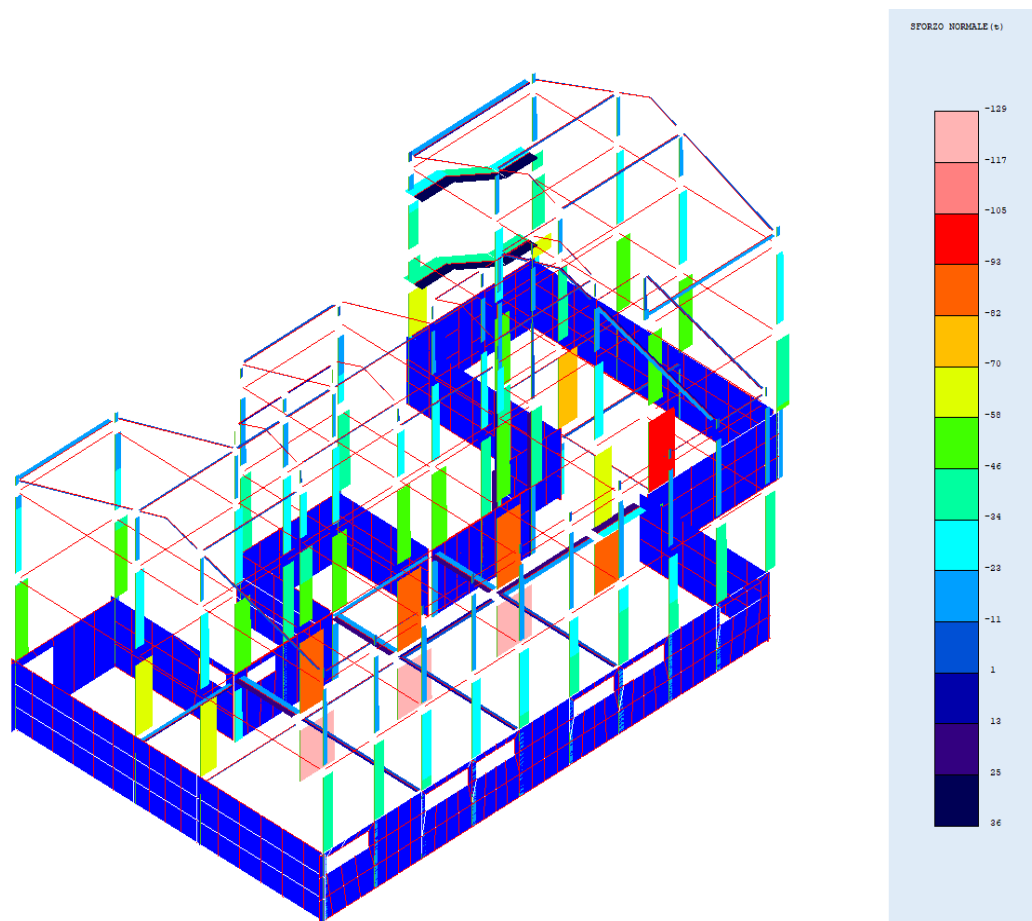
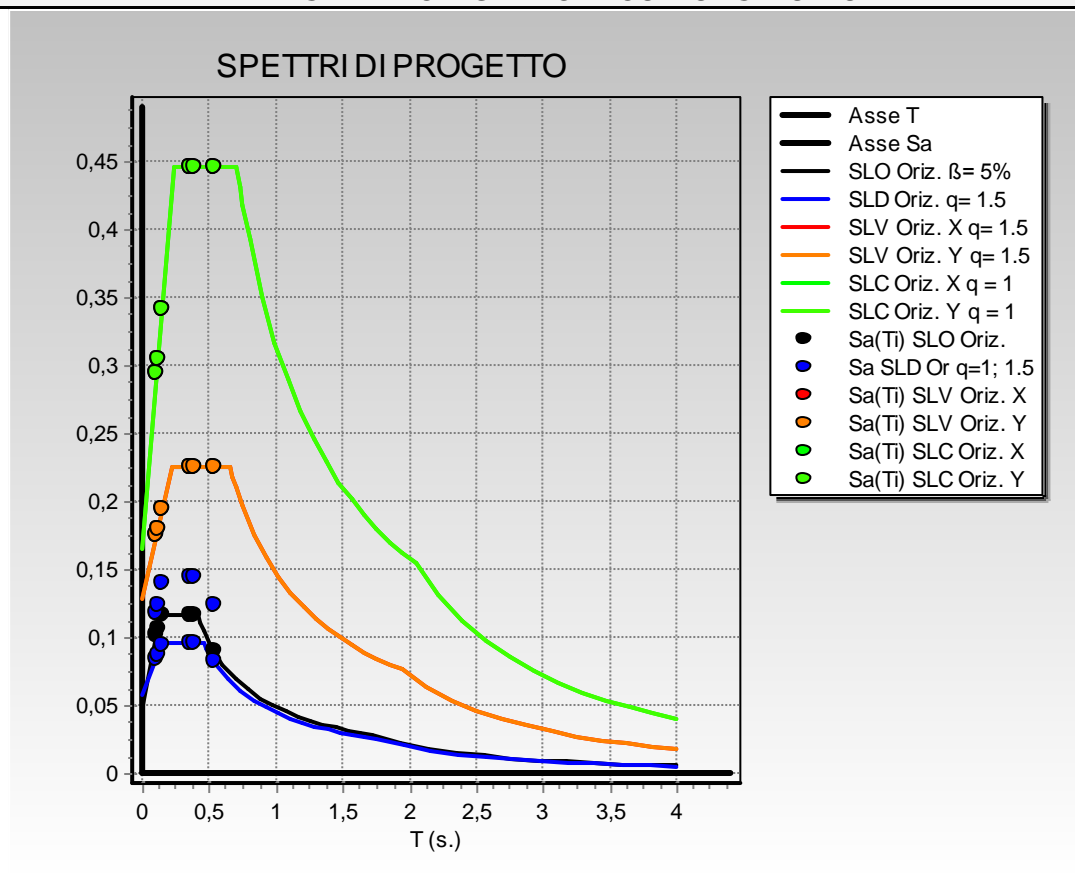


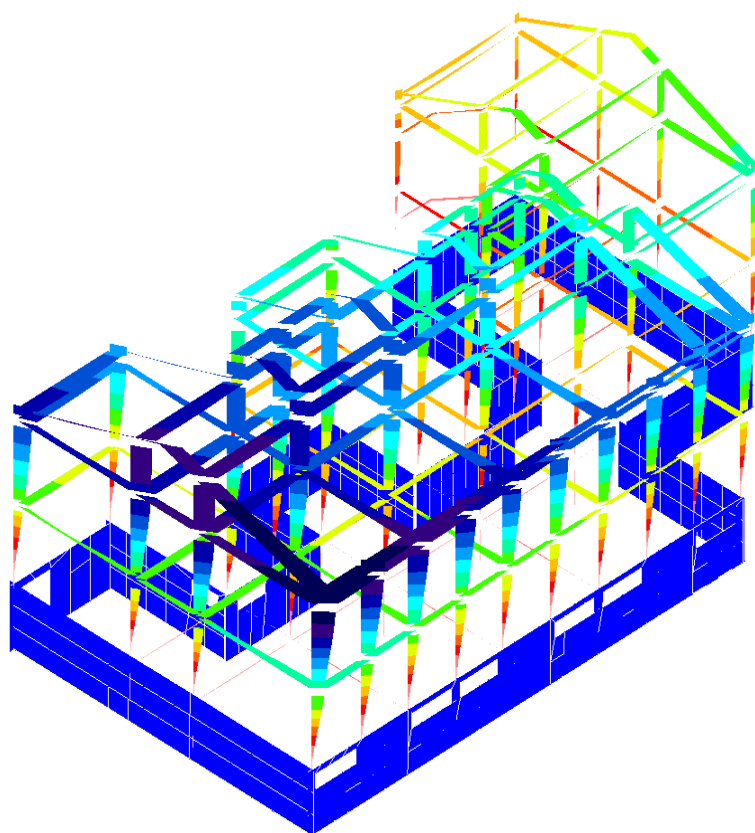
MOMENTO (kN/m)



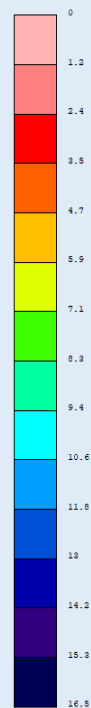
MOMENTO COMB.INVILUPPO Z

RAPPRESENTAZIONI GRAFICHE OUTPUT STRUTTURA

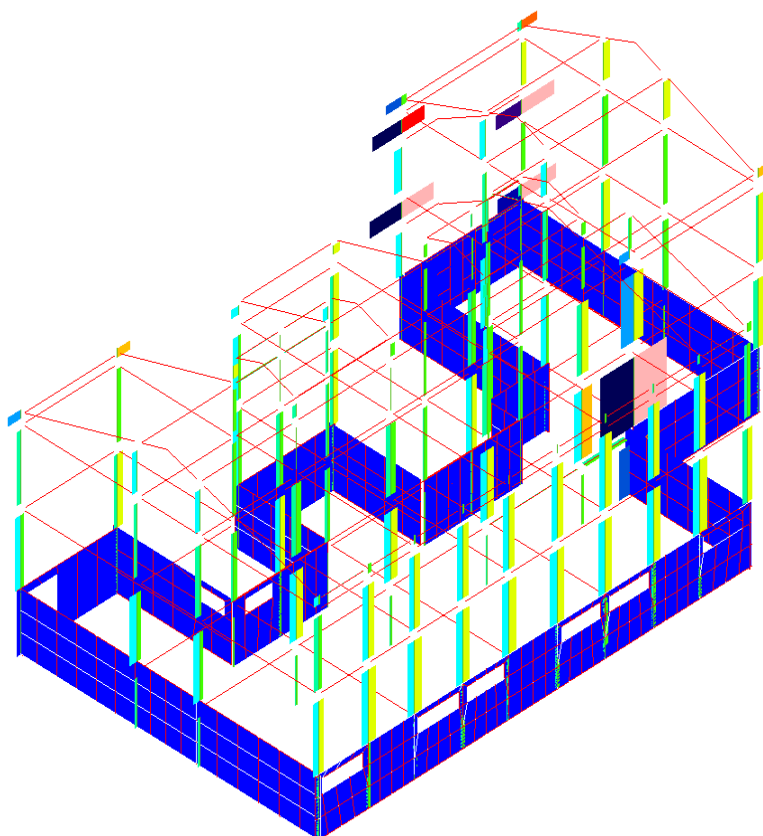




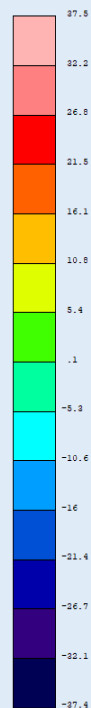
SPOSTAMENTI ASTE
(mm)



SPOSTAMENTI ASTE COMBINAZ.N. 9

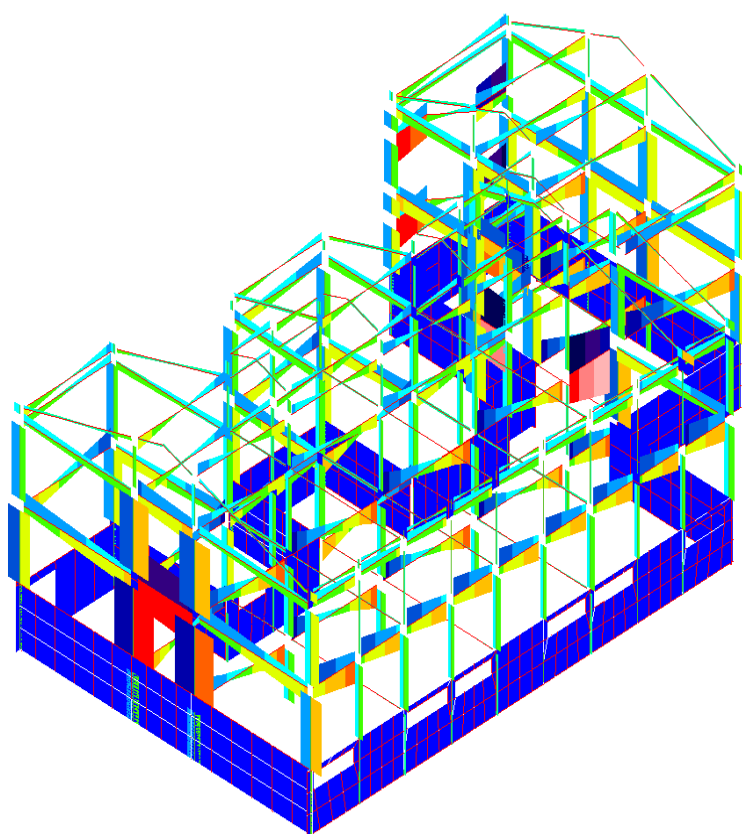


TAGLIO(%)

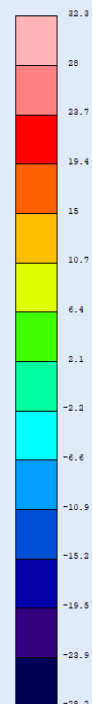


TAGLIO COMB.INVILUPPO X

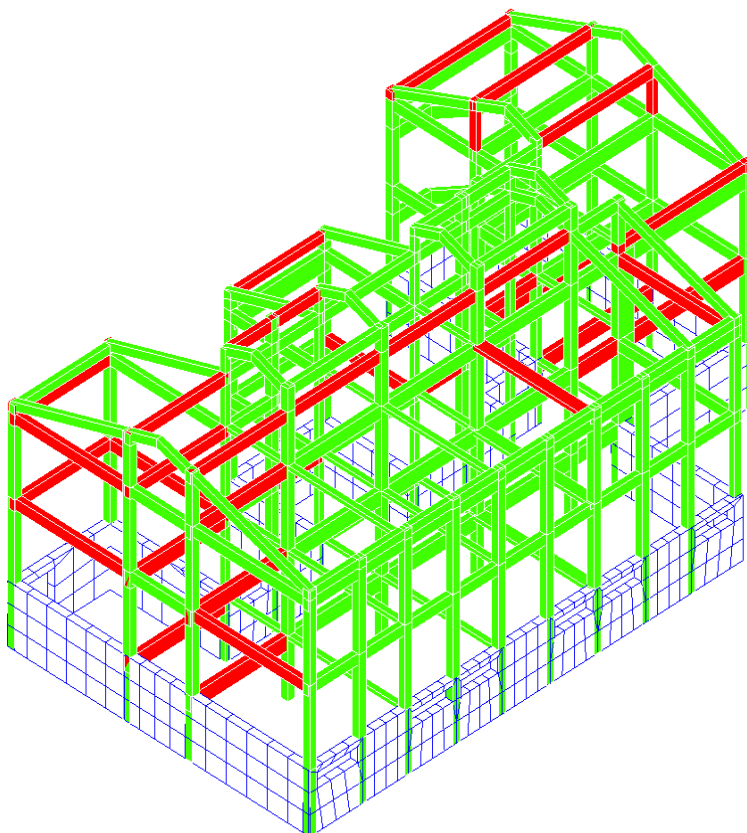
RAPPRESENTAZIONI GRAFICHE OUTPUT STRUTTURA



TAGLIO (t)



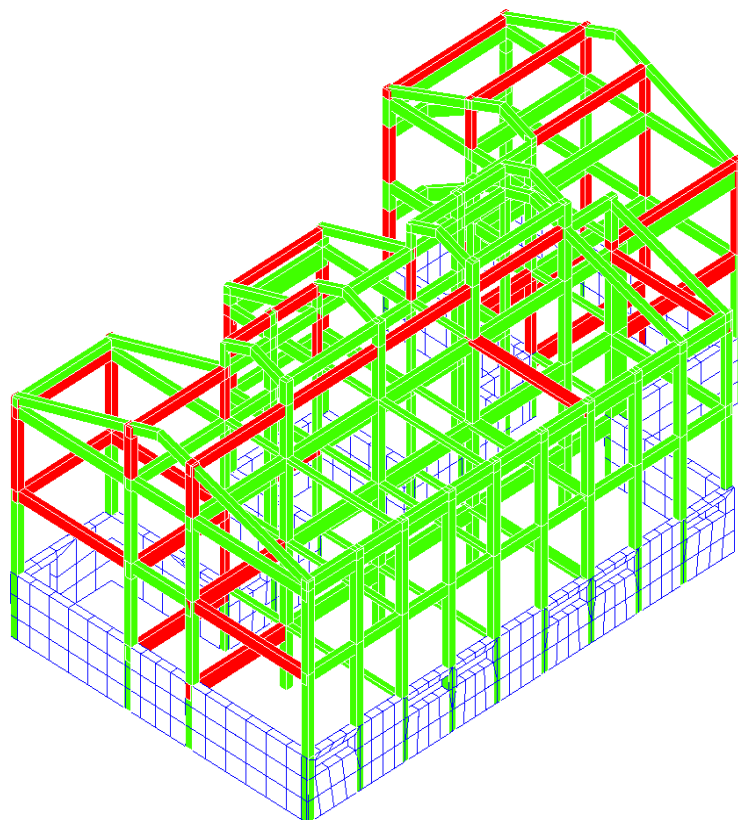
TAGLIO COMB. INVILUPPO Y



VERIFICA ASTE
A PRESSO-FLESSIONE



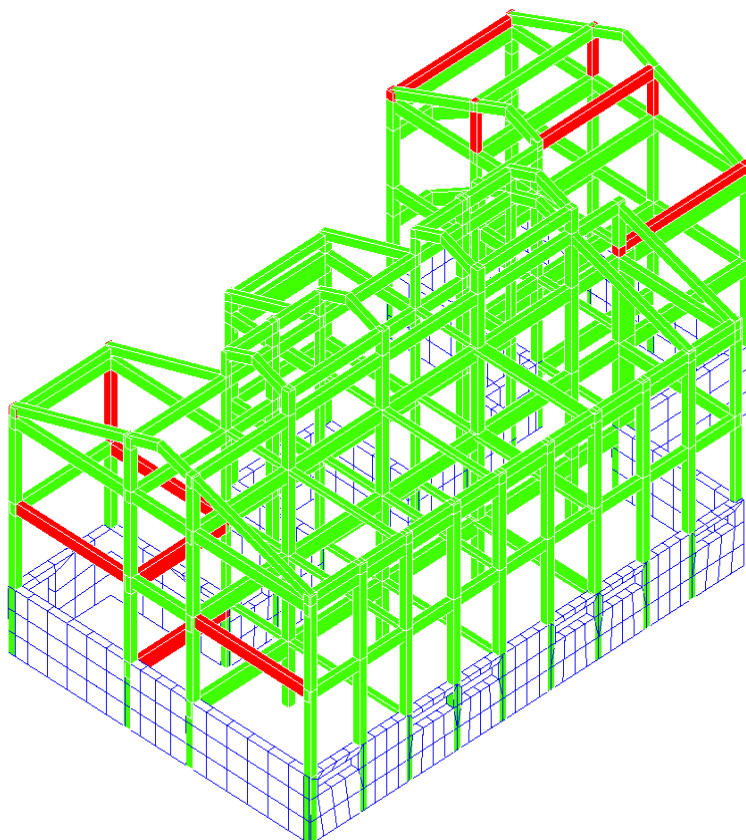
VERIFICA ASTE A PRESSO-FLESSIONE



VERIFICA ASTE
TENSIONI MATERIALI



VERIFICA ASTE TENSIONI MATERIALI

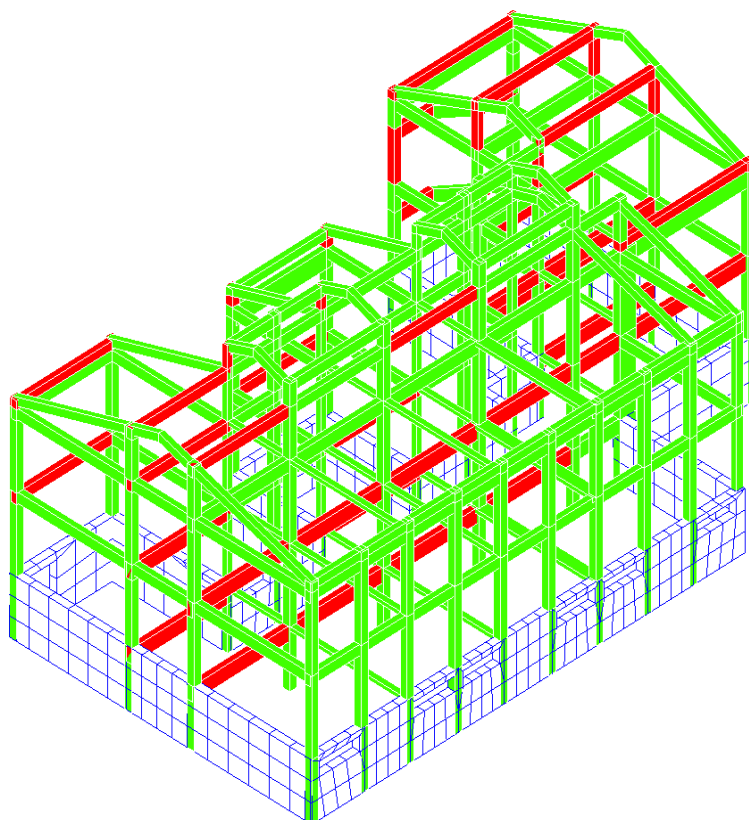


VERIFICA ASTE
A FESSURAZIONE



VERIFICA ASTE A FESSURAZIONE

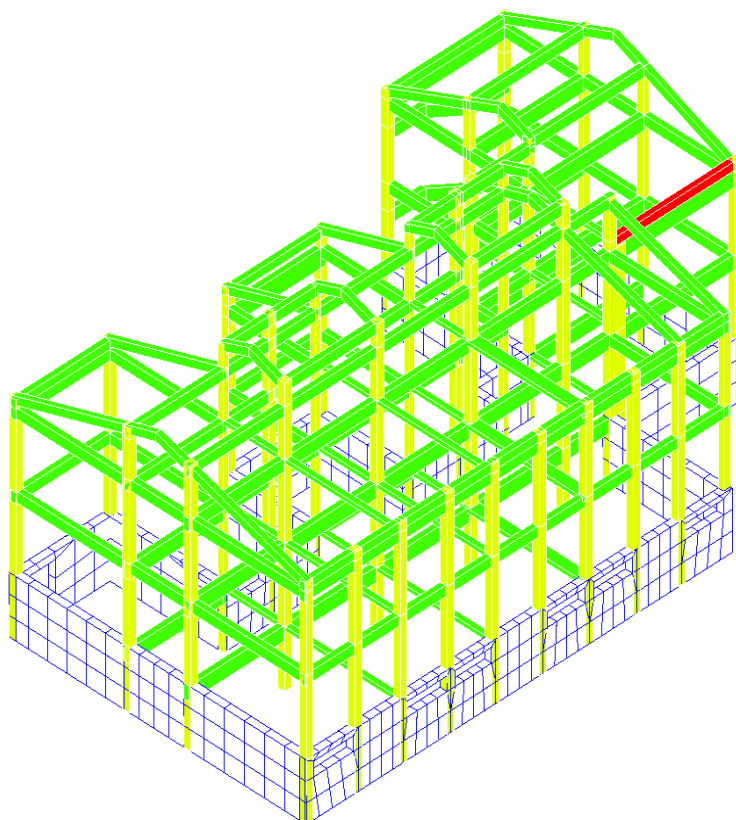
RAPPRESENTAZIONI GRAFICHE OUTPUT STRUTTURA



VERIFICA ASTE
A TAGLIO SLU



VERIFICA ASTE A TAGLIO SLU



VERIFICA ASTE PER
FRECCIA ECCESSIVA



VERIFICA ASTE PER FRECCIA ECCESSIVA