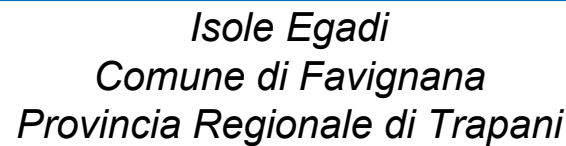


SEZIONE VERTICALE C-C



An aerial photograph of a coastal town and harbor. The town is densely packed with buildings, mostly in shades of brown and tan, situated on a peninsula or along the coast. A large, dark blue harbor or bay is visible, with a prominent breakwater or pier extending into the water. The surrounding landscape is a mix of green fields and brown, arid-looking terrain. The image is oriented horizontally, but the content is rotated 90 degrees clockwise relative to the page's orientation.

<p><i>Ufficio di progettazione:</i></p> <p>Ministero delle Infrastrutture e della Mobilità Sostenibili</p> <p>Provveditorato Interregionale Opere Pubbliche</p> <p>Sicilia - Calabria</p> <p><i>Ufficio 3 Tecnico e Opere Marittime per la Sicilia</i></p>	<p>Responsabile Unico del Procedimento</p> <p><i>Ing. Salvatore Caruso</i></p>
--	---

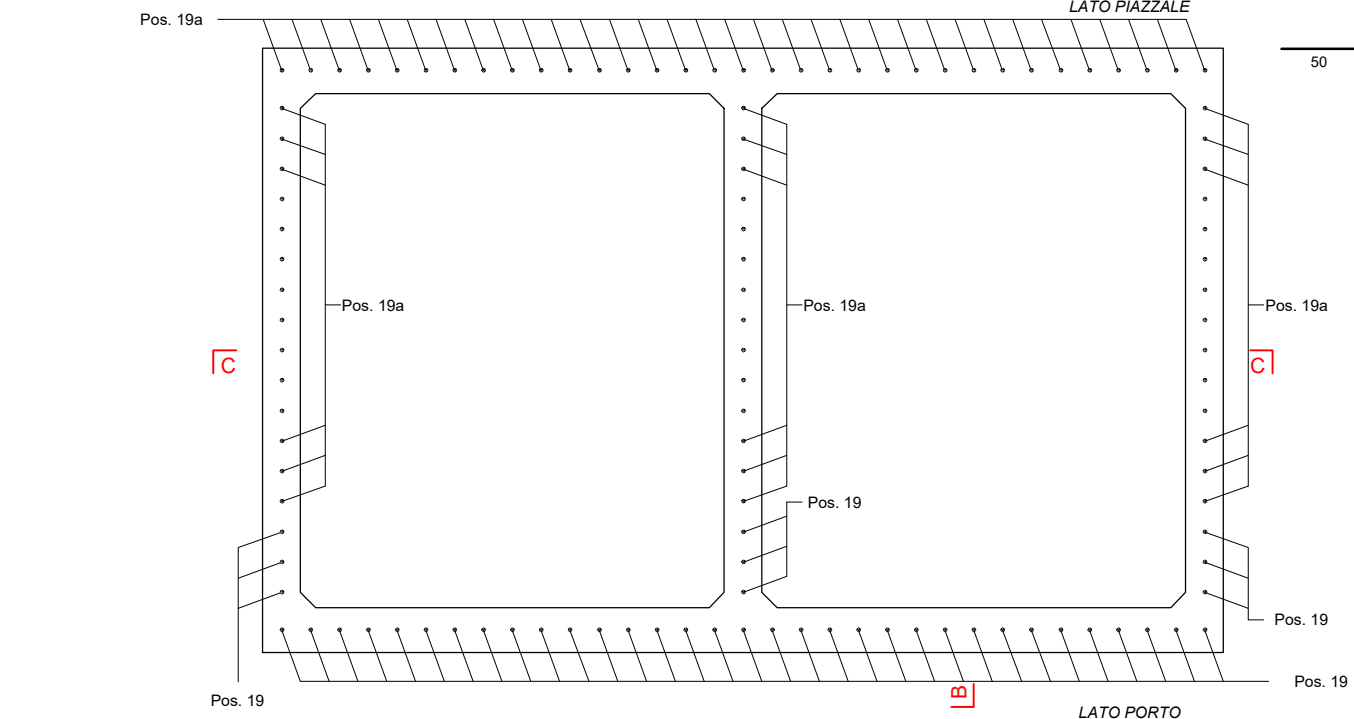
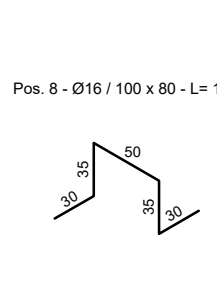
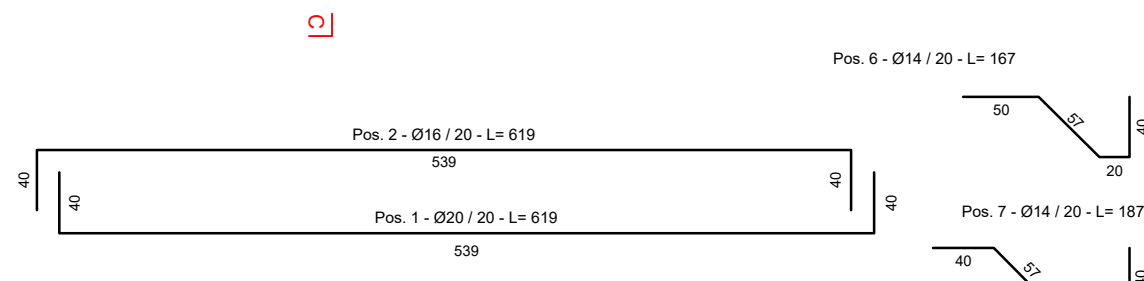
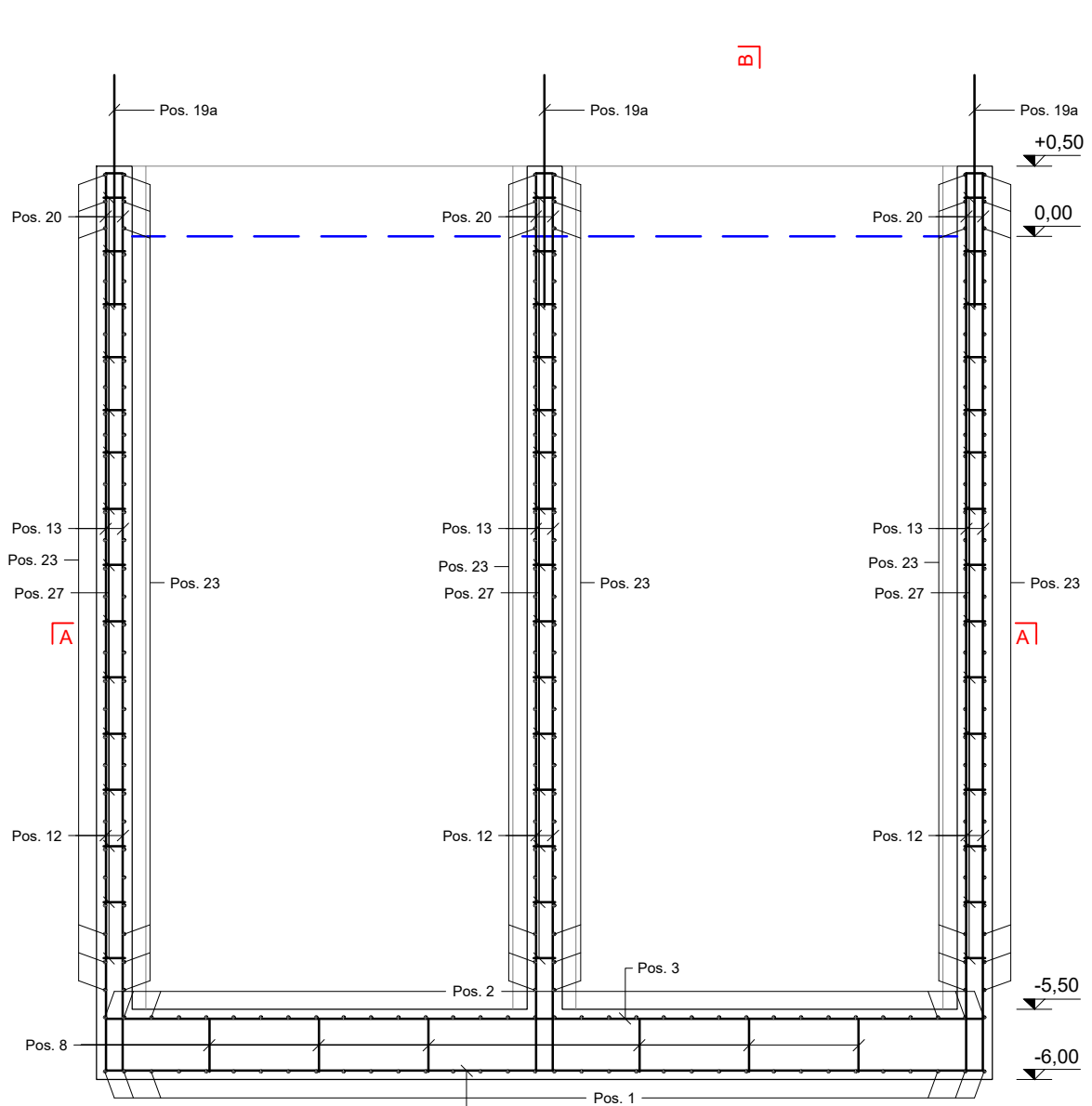
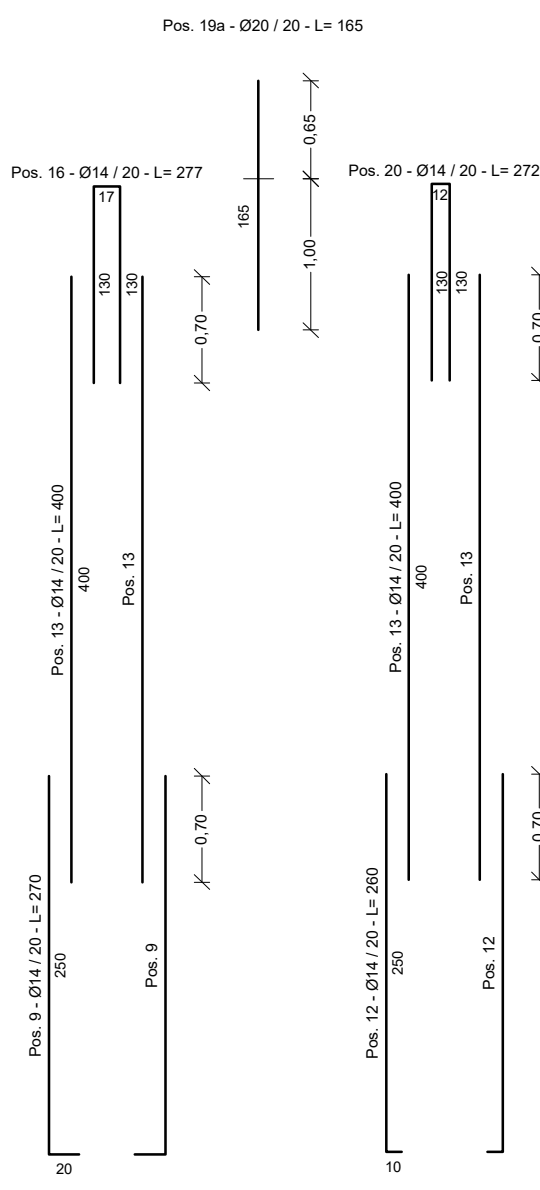
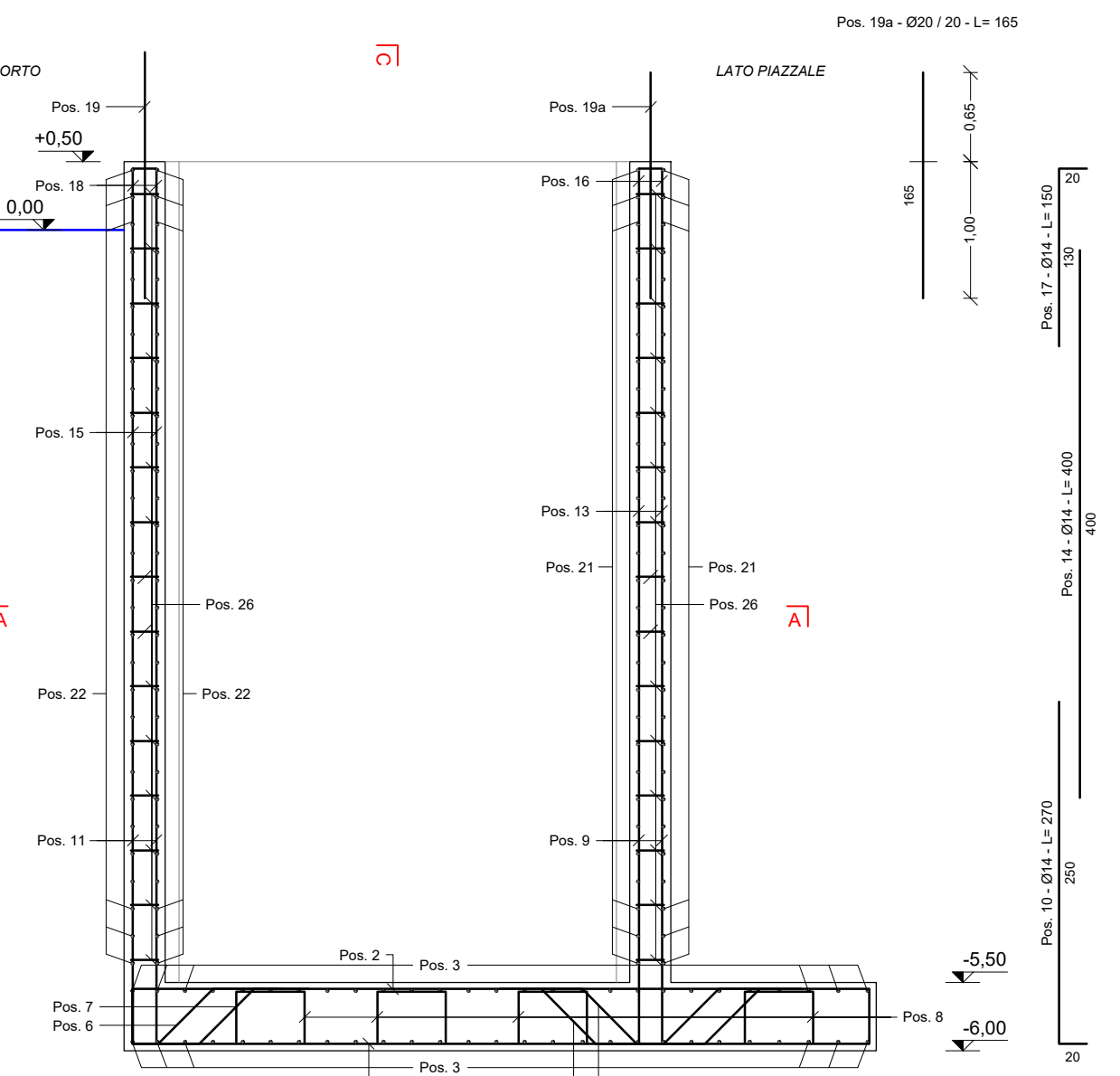
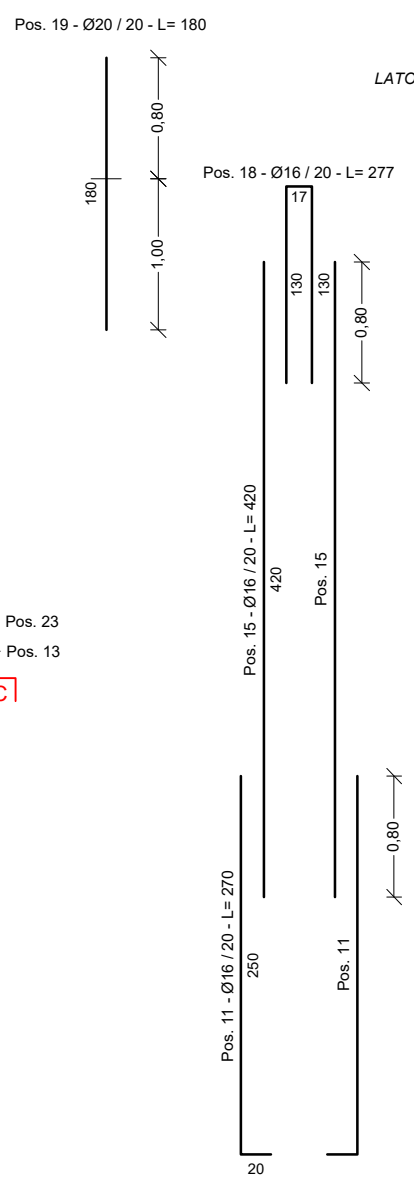
Il Progettista delle strutture:
DUOMI S.r.l.
Ing. Guglielmo Migliorino



1	11 DICEMBRE 2019	EMISSIONE REVISIONE 1	M.M.	M.M.	G.M.
0	21 MAGGIO 2019	EMISSIONE	-	-	-
Rev.	Data	Descrizione	Eseguito	Controllato	Approvato

Cassone Tipo G2: Armature

DATA	DESCRIZIONE	N°/SIGLA							REV	SCALA
11/12/2019	EMISSIONE REVISIONE 1	P	E	-	0	2	3	4	1	1:50



PRIMA POSIZIONE: 1
ULTIMA POSIZIONE: 27

CARATTERISTICHE DEI MATERIALI	
CALCESTRUZZO	C 35/45
ACCIAIO	B 450 C
CLASSE DI ESPOSIZIONE	XS 3
RAPPORTO A/C	<0.45
DIAMETRO MASSIMO INERTE	32 mm
COPRIFERRO SOLETTONE	5 cm
COPRIFERRO PARETI E SETTI	5 cm
CLASSE DI CONSISTENZA	S4/S5
CONTENUTO MINIMO DI CEMENTO	360 kg/m ³
<p align="center">UNITA' DI MISURA</p> <p>CARPENTERIE IN "m"</p> <p>FERRI D'ARMATURA IN "cm"</p>	