

COMUNE DI TRAPANI



TRAPANI SERVIZI S.P.A.
VIA DEL SERRO - C/DA BELVEDERE
91100 TRAPANI

PROGETTO PER LA REALIZZAZIONE DI UN LOTTO DI
DISCARICA PER RIFIUTI NON PERICOLOSI DENOMINATO "TPS1"
PRESSO IL SITO DI CONTRADA BORRANEA NEL TERRITORIO
DEL COMUNE DI TRAPANI

INQUADRAMENTO TERRITORIALE
PROGETTO ESECUTIVO

Consulenza alla Progettazione



via Sardegna, 33
90144 Palermo (PA)
Tel. 091 - 6788257

ELABORATO
E.G.01

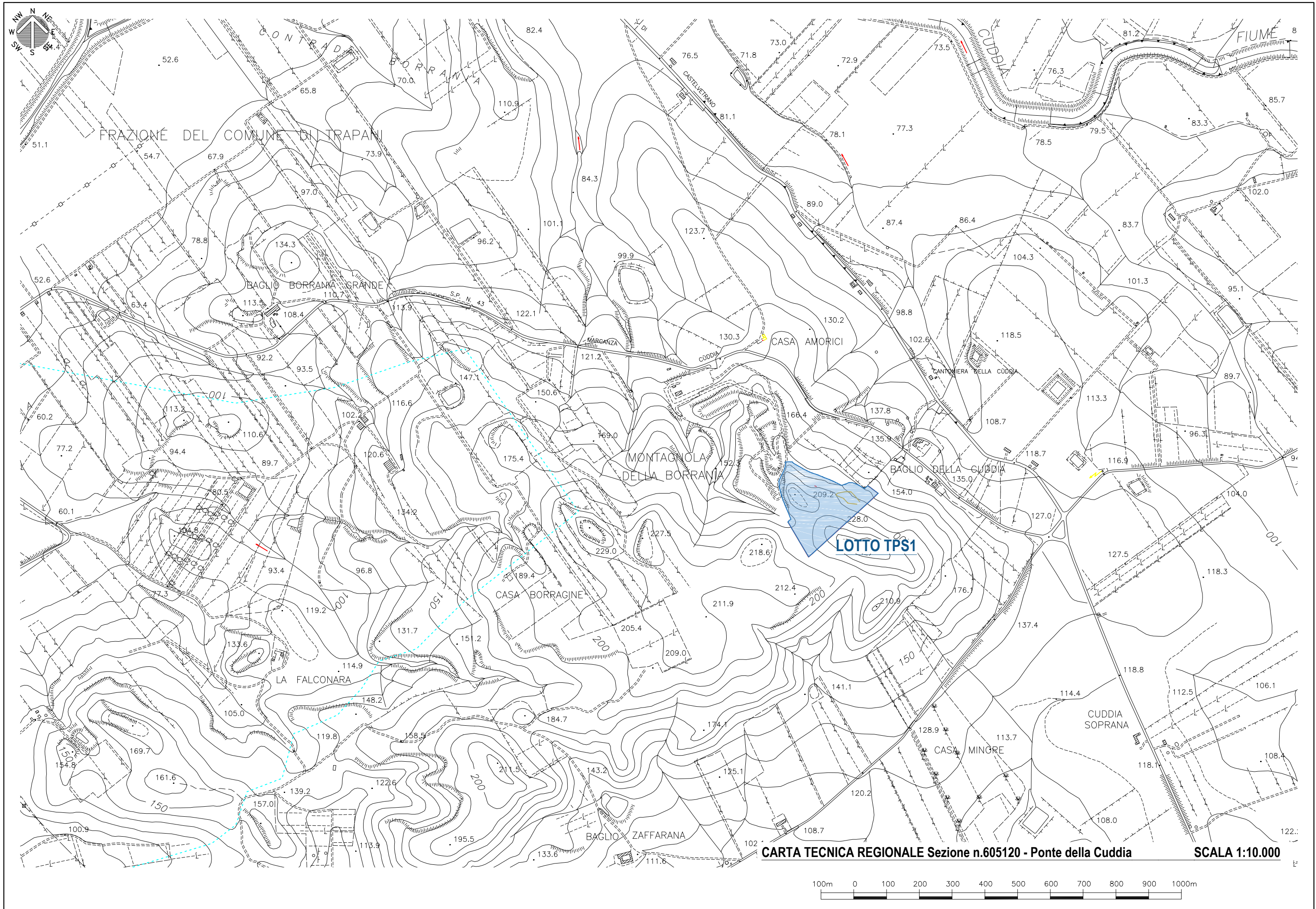
LUGLIO 2019

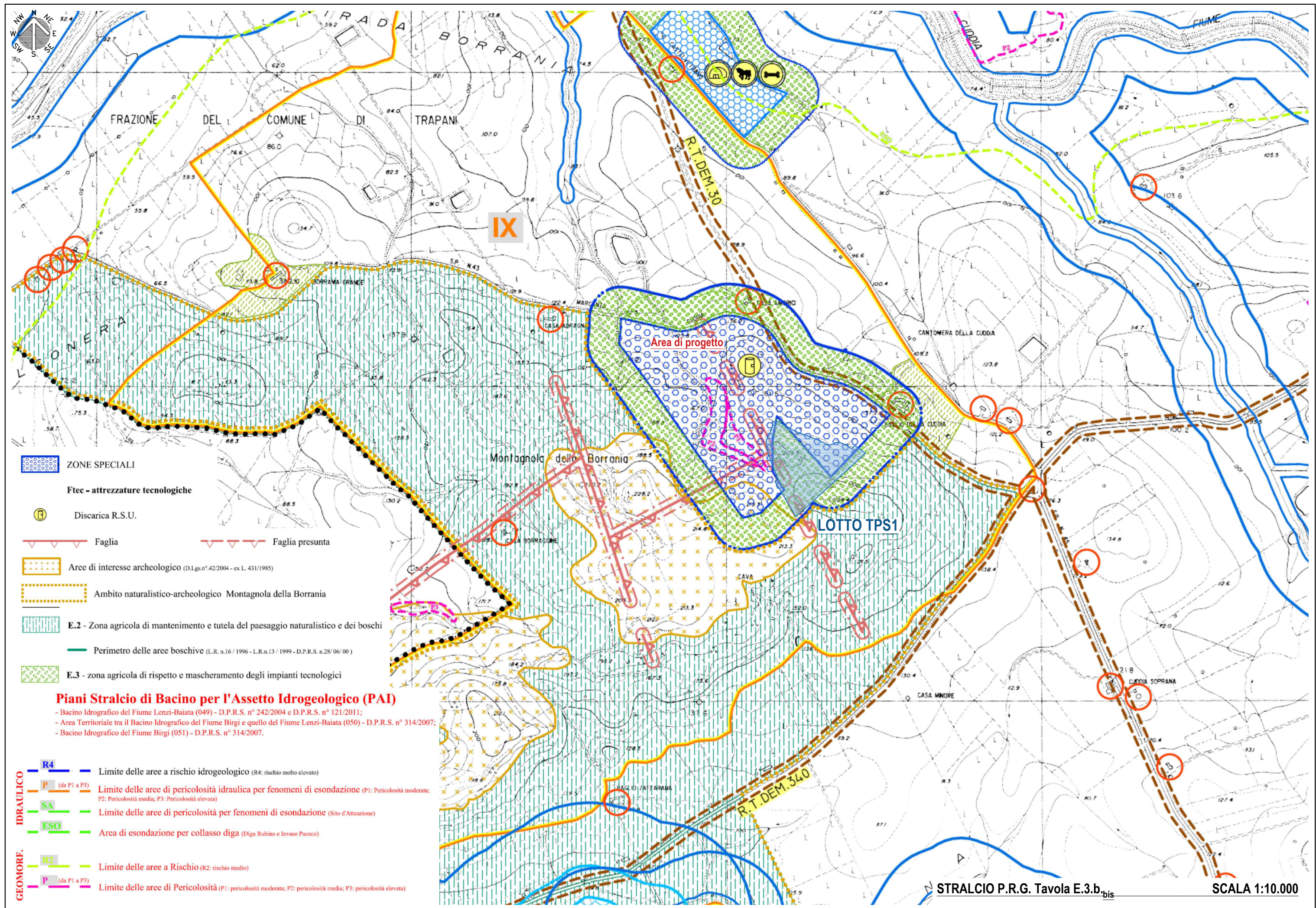
Rev.1

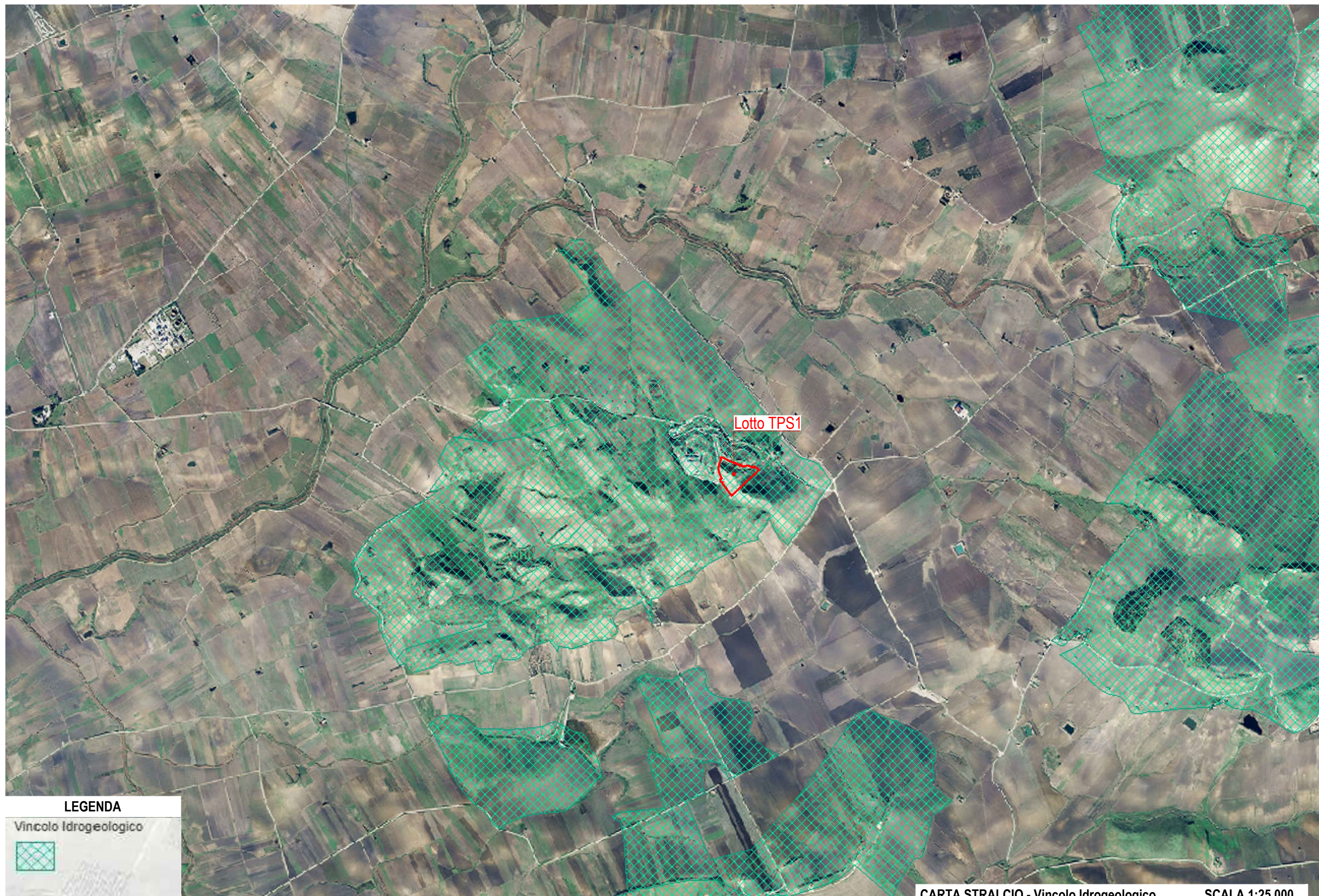
Rev.2

TRAPANI SERVIZI S.P.A.
L'Amministratore Unico
(Ing. Carlo Maria Guarnotta)

Il Progettista
Ing. Carlo Maria Guarnotta



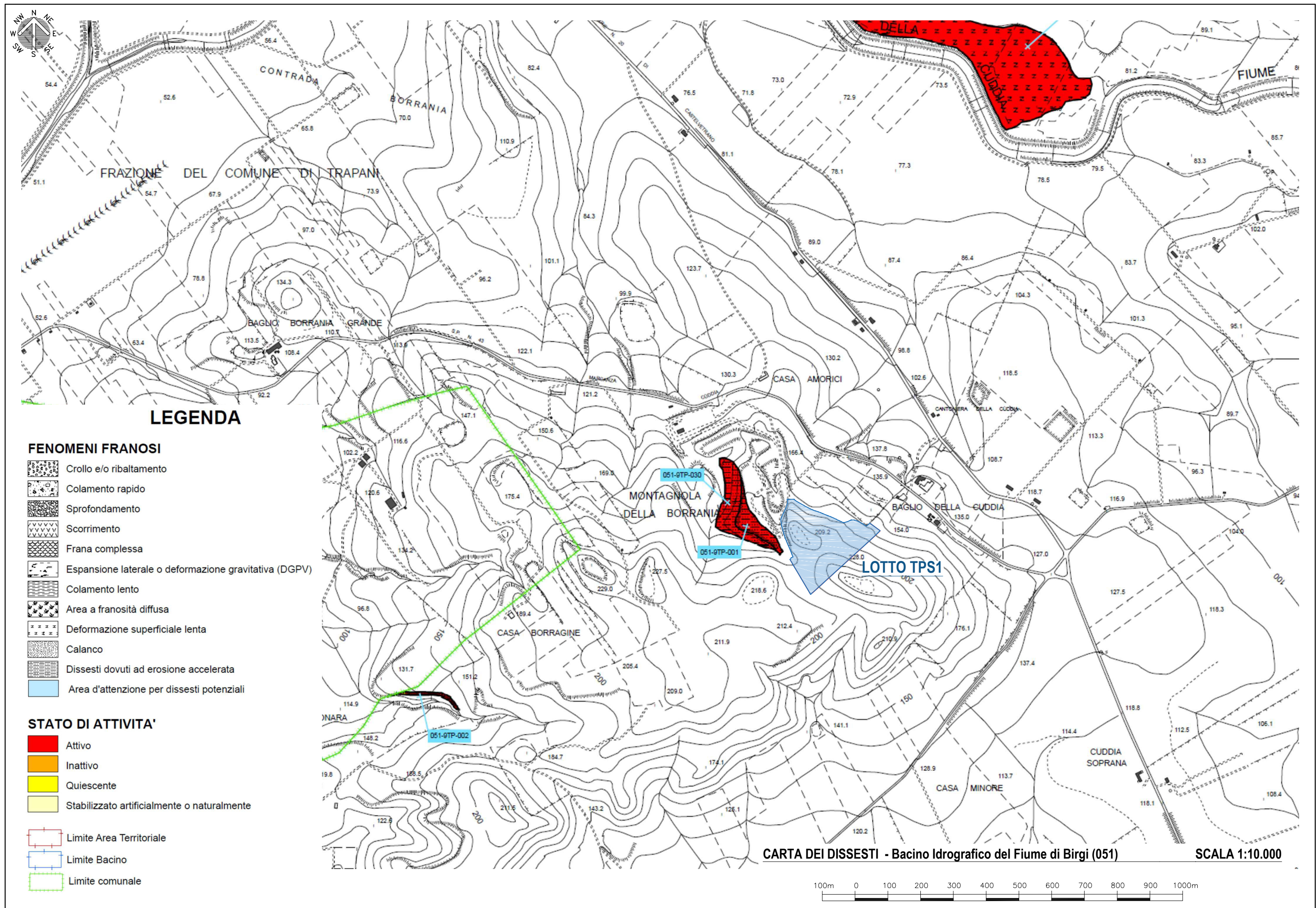


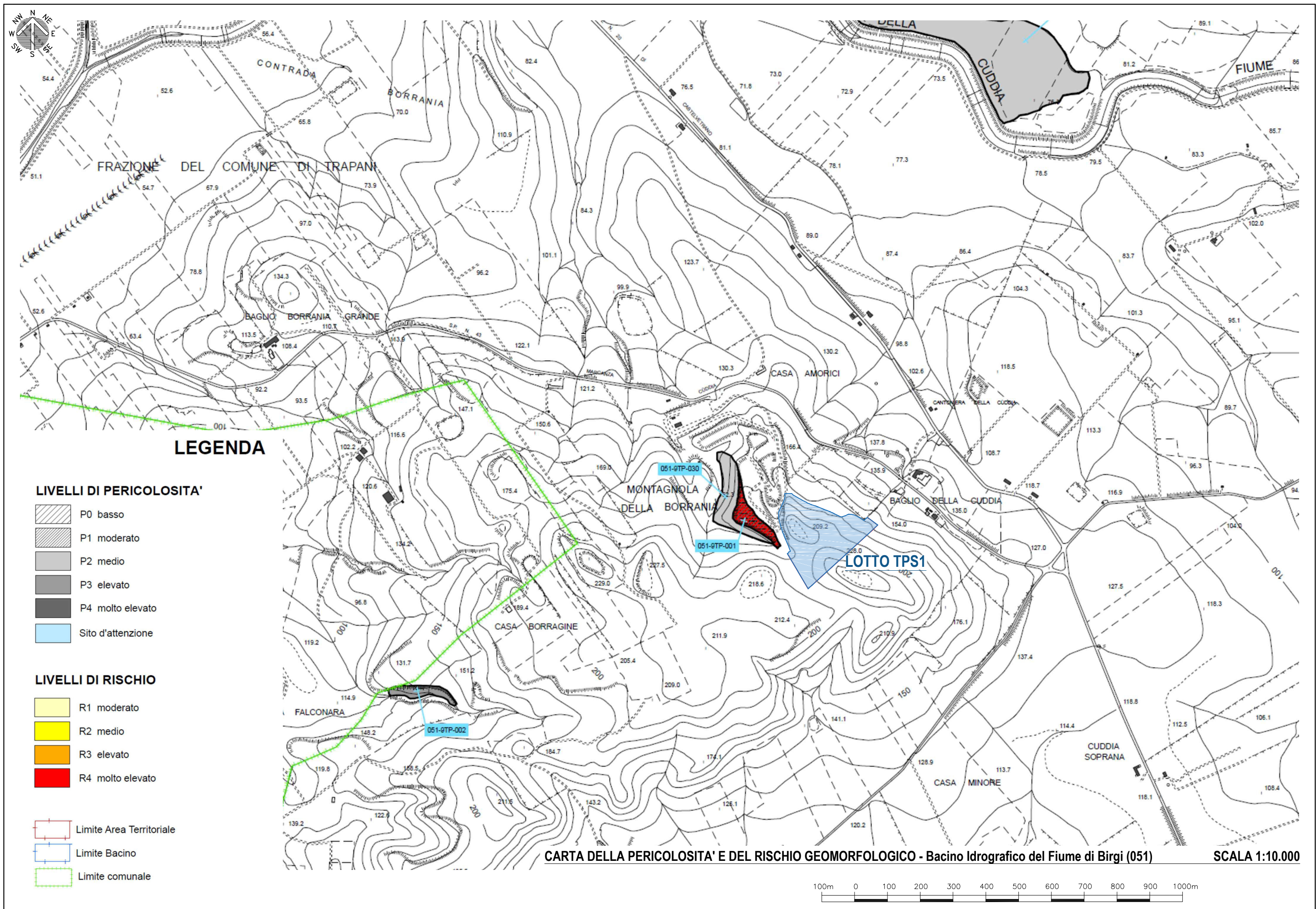


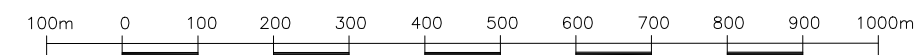
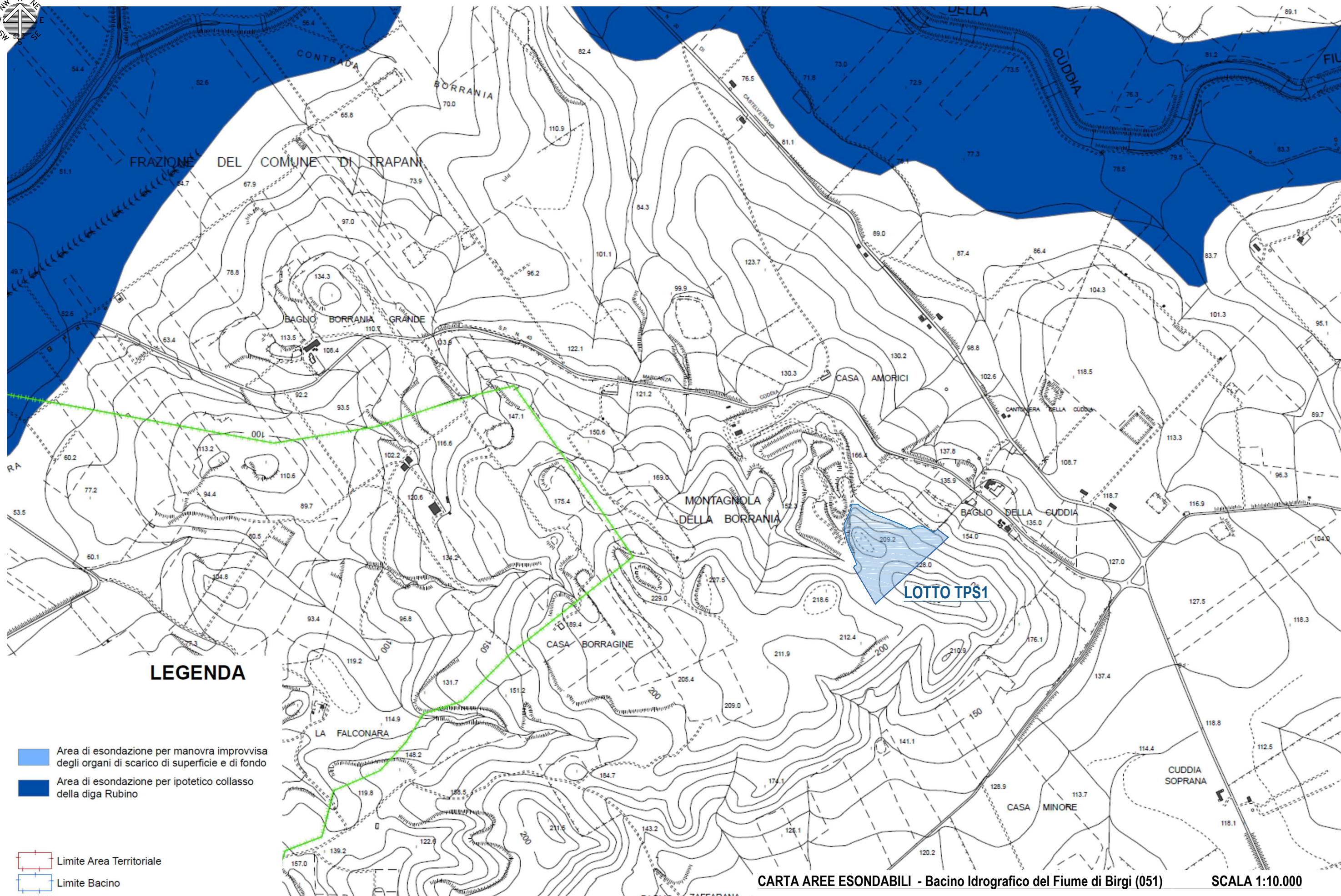
LEGENDA

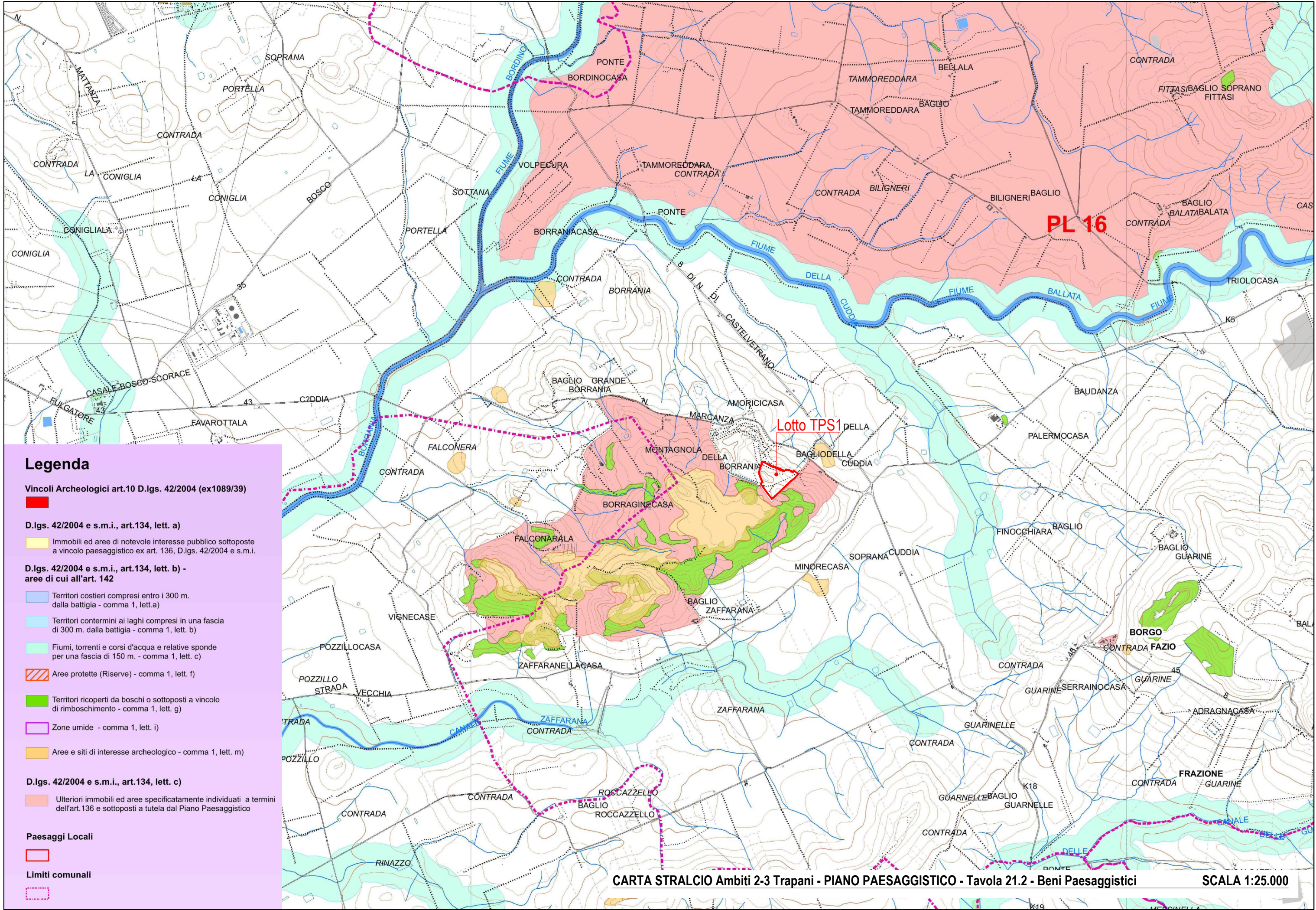
Vincolo Idrogeologico

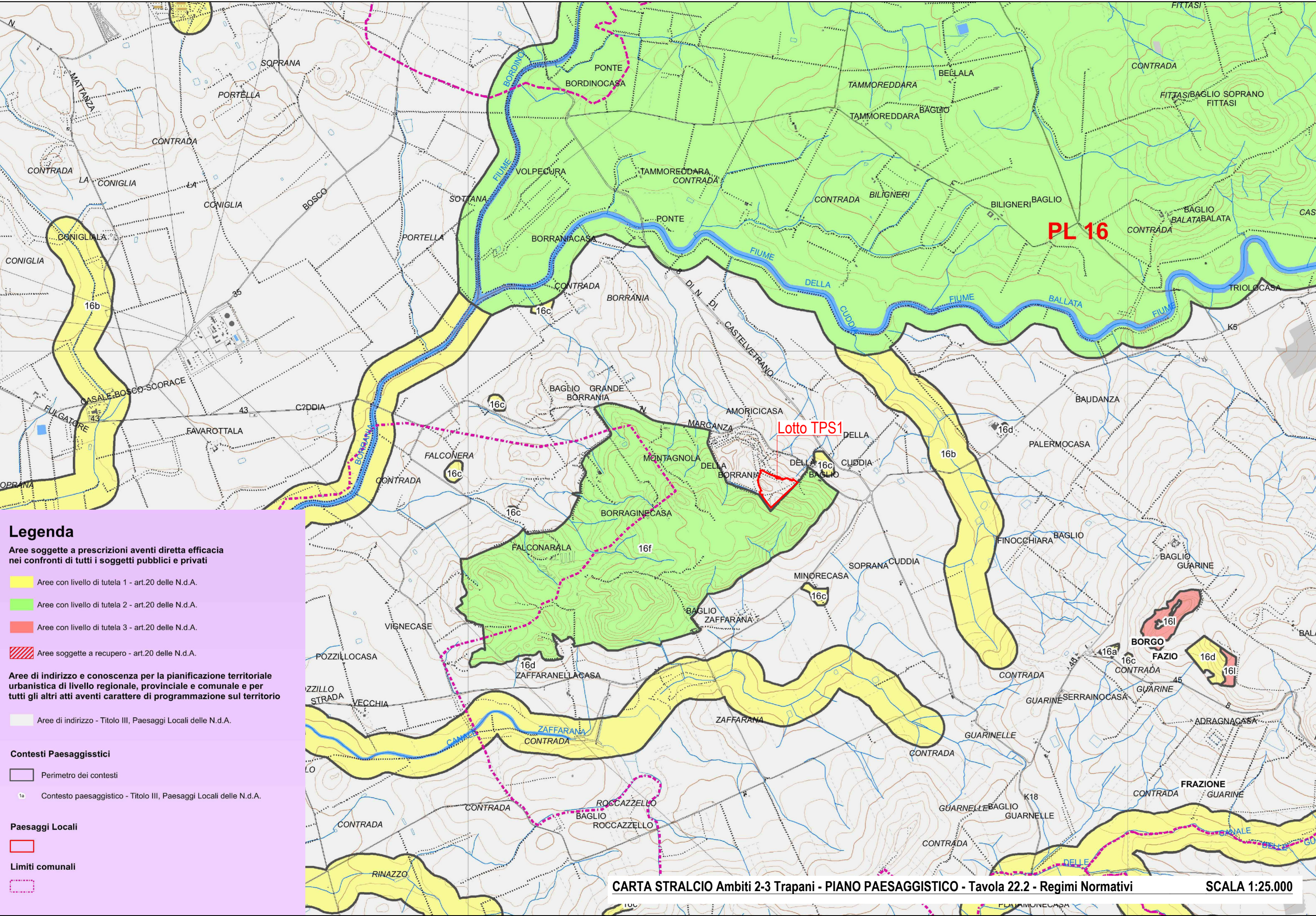


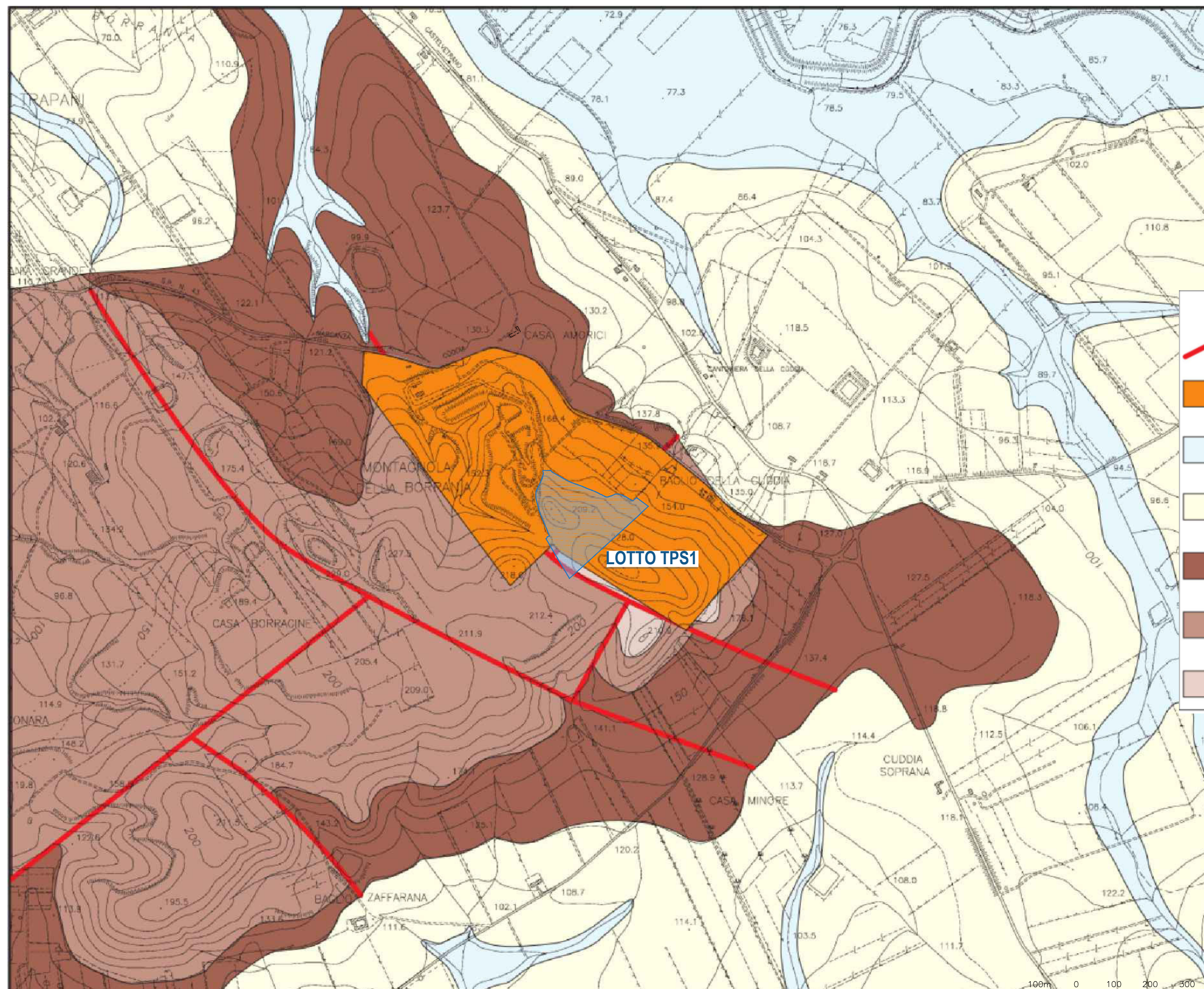















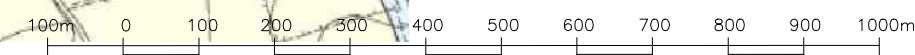


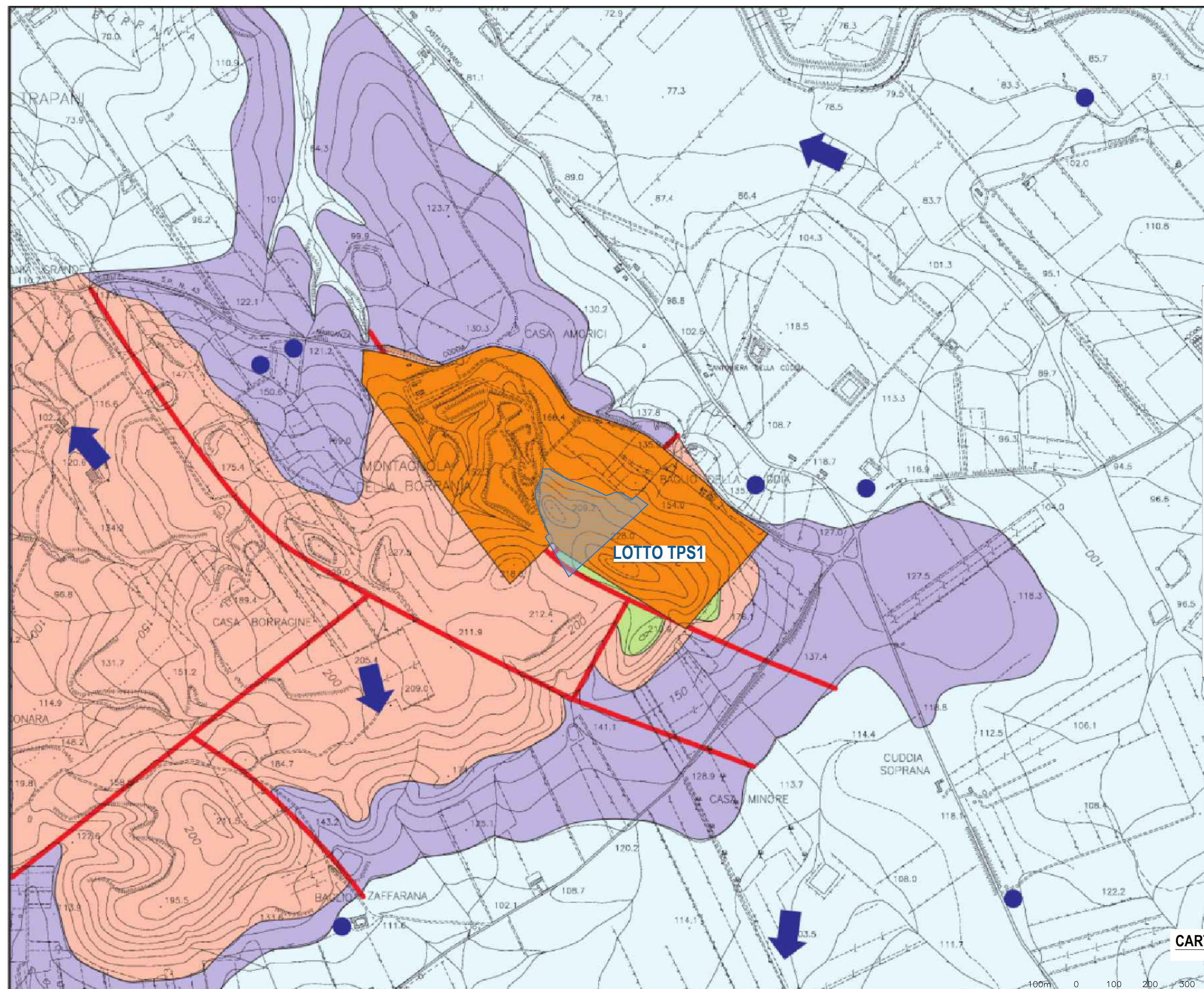


LEGENDA






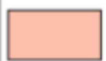
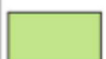
-  Faglie principali
 -  Rifiuti solidi urbani
 -  Alluvioni recenti ed attuali (Olocene)
 -  Alluvioni terrazzate (Pleistocene)
 -  Argille sabbiose grigio-azzurre risedimentate, a struttura caotica
 -  Alternanze ritmiche di calcari arenacei e marne
 -  Mame argillose di colore bianco latte
- (Miocene medio-sup.)

CARTA GEOLOGICA SCALA 1:10.000

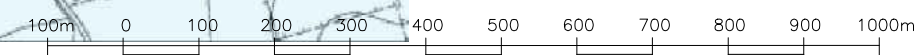


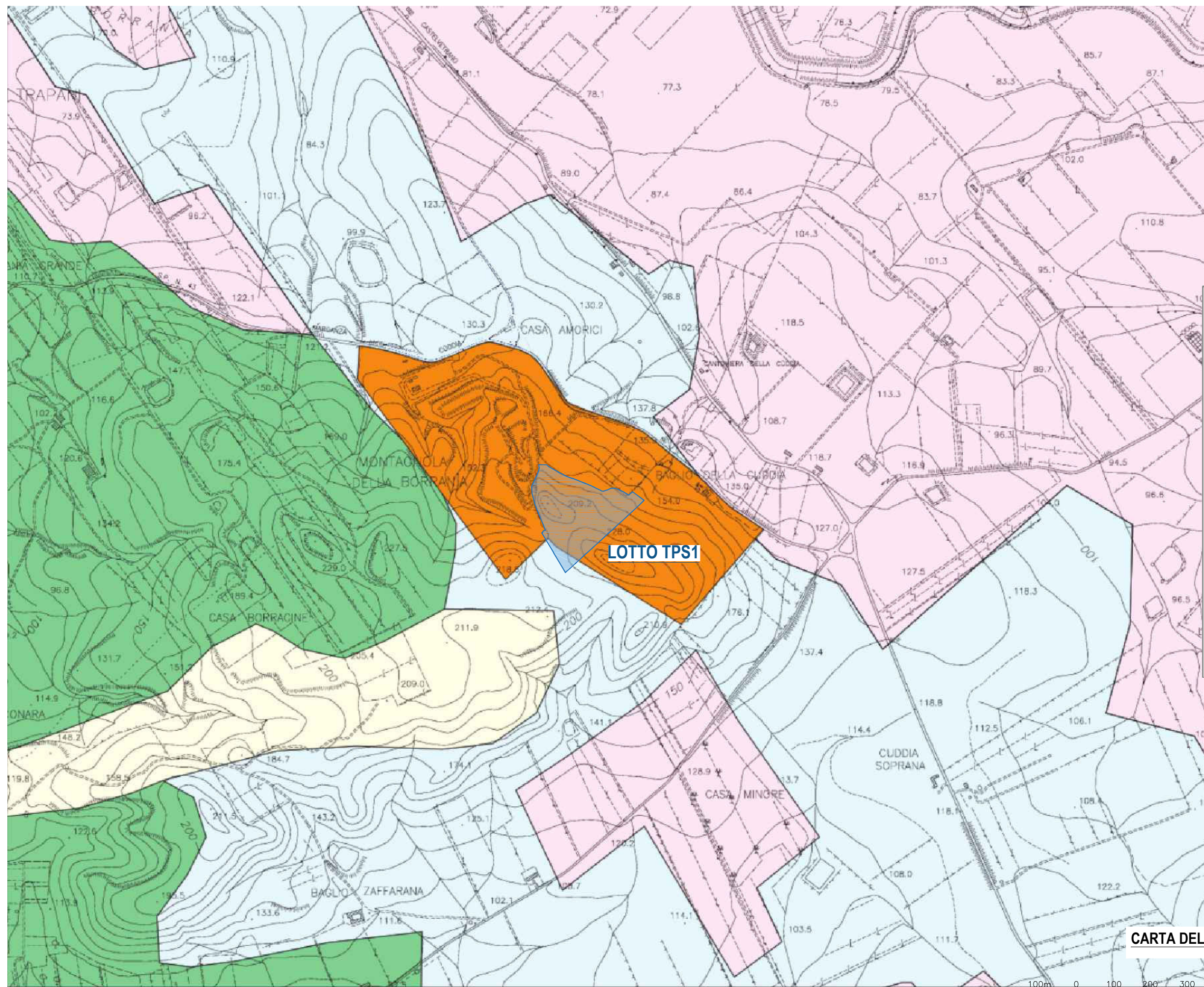


LEGENDA



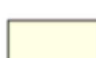


-  Pozzi
-  Probabili direttrici di flusso idrico sotterraneo
-  Faglie principali
-  Rifiuti solidi urbani: permeabilità media per porosità primaria
-  Complesso alluvionale: permeabilità da media ad elevata per porosità primaria
-  Complesso argilloso-sabbioso: permeabilità da nulla a molto bassa per porosità primaria
-  Complesso calcarenitico-marnoso: permeabilità da bassa a media di tipo misto
-  Complesso mamoso-argilloso: permeabilità da molto bassa a bassa per fessurazione

CARTA IDROGEOLOGICA SCALA 1:10.000

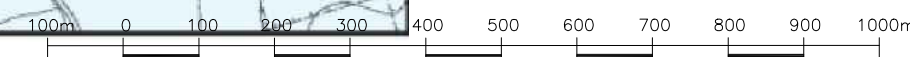


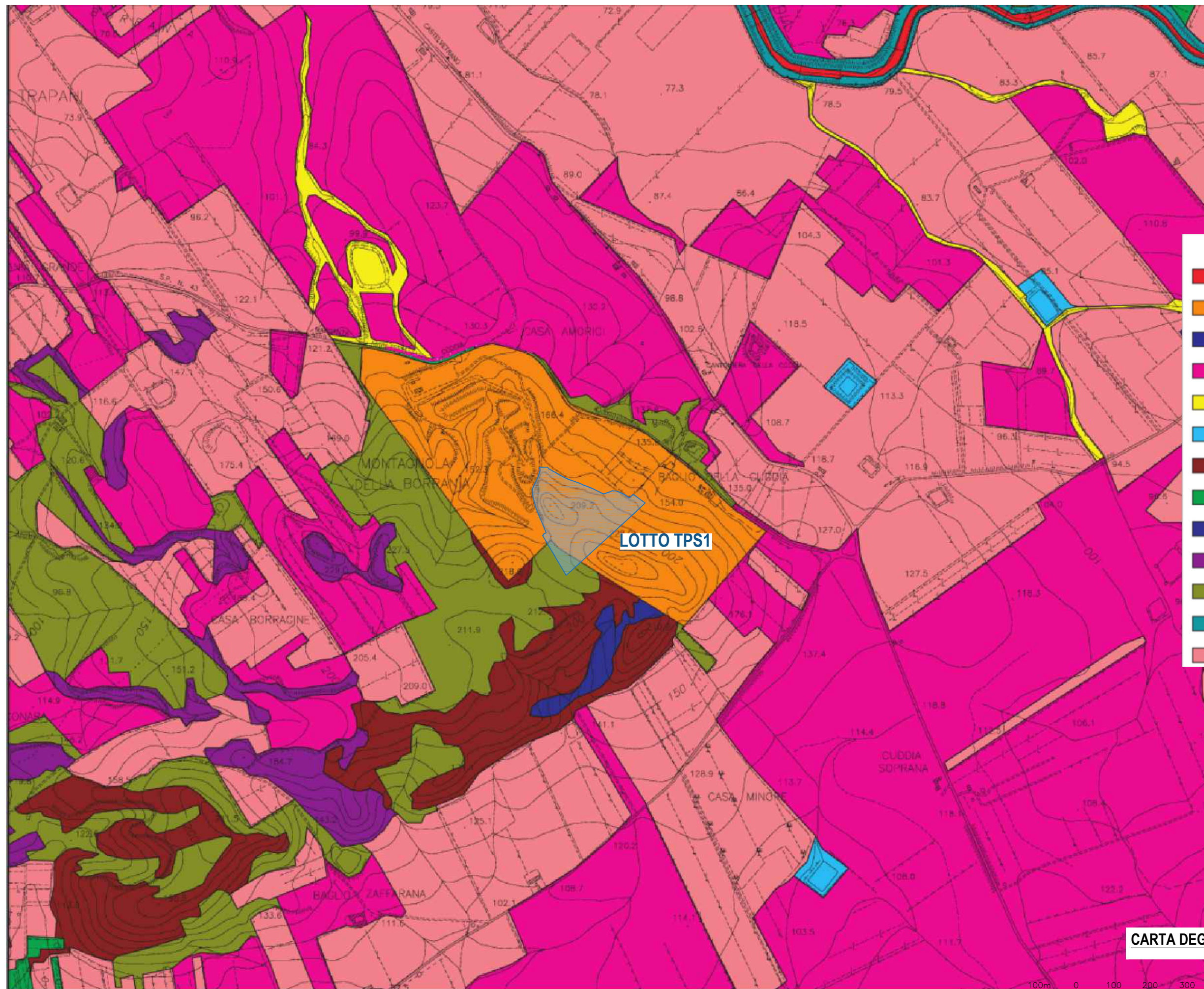


LEGENDA

-  Aree adibite a discarica
-  Aree a prevalenti colture agrarie, con spazi naturali
-  Aree a vegetazione sclerofila
-  Seminativi in aree non irrigue
-  Vigneti

CARTA DELL'USO DEL SUOLO **SCALA 1:10.000**



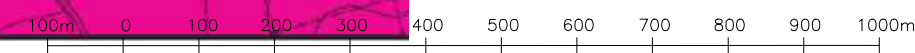


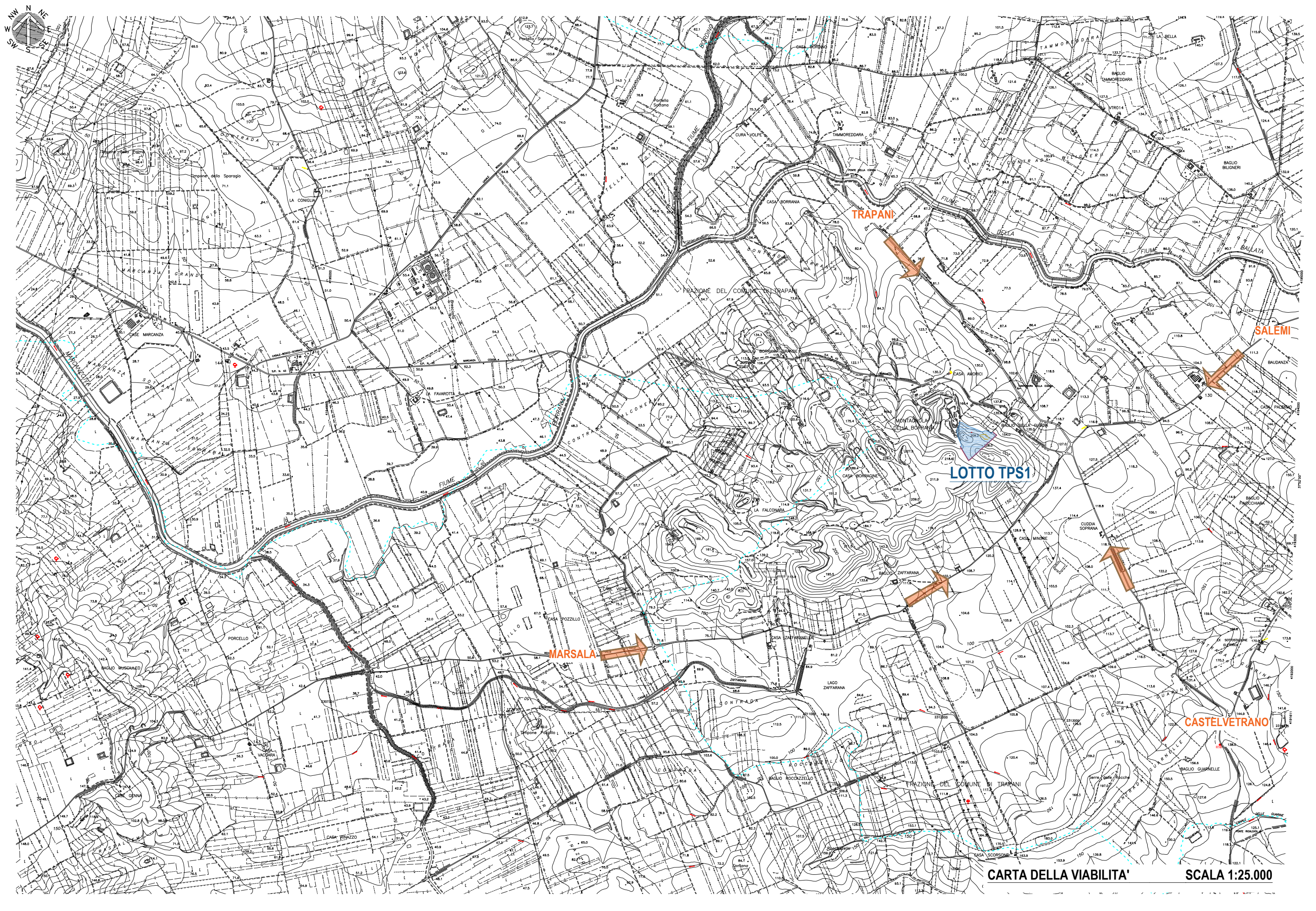
LEGENDA

- Boscaglie igrofile a tamerici e/o oleandro (*Tamaricetalia*)
- Discariche
- Città, centri abitati
- Coltivazioni erbacee
- Greti fluviali
- Laghi e pozzi artificiali generalmente senza vegetazione
- Macchia a palma nana
- Oliveti
- Prati a *Ampelodesmos mauritanicus* (*Avenulo-Ampelodesmion*)
- Prati aridi mediterranei (*Thero-Brachypodietea*)
- Prati aridi mediterranei subnitrofilo e vegetazione post-culturale (*Brometalia rubenti-tectorum*)
- Vegetazione dei canneti (*Phragmition*)
- Vigneti

CARTA DEGLI HABITAT

SCALA 1:10.000





CARTA DELLA VIABILITA'

SCALA 1:25.000