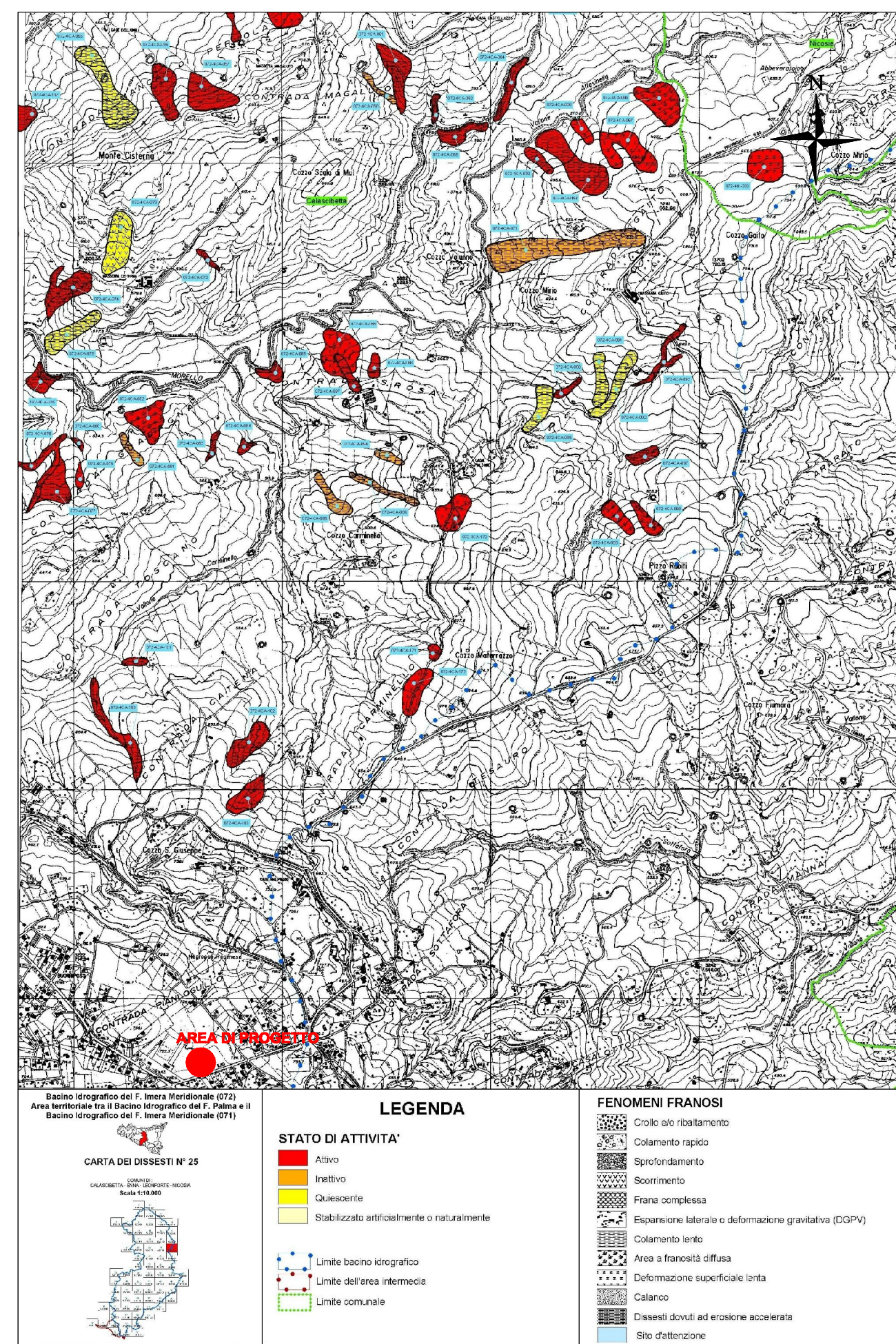
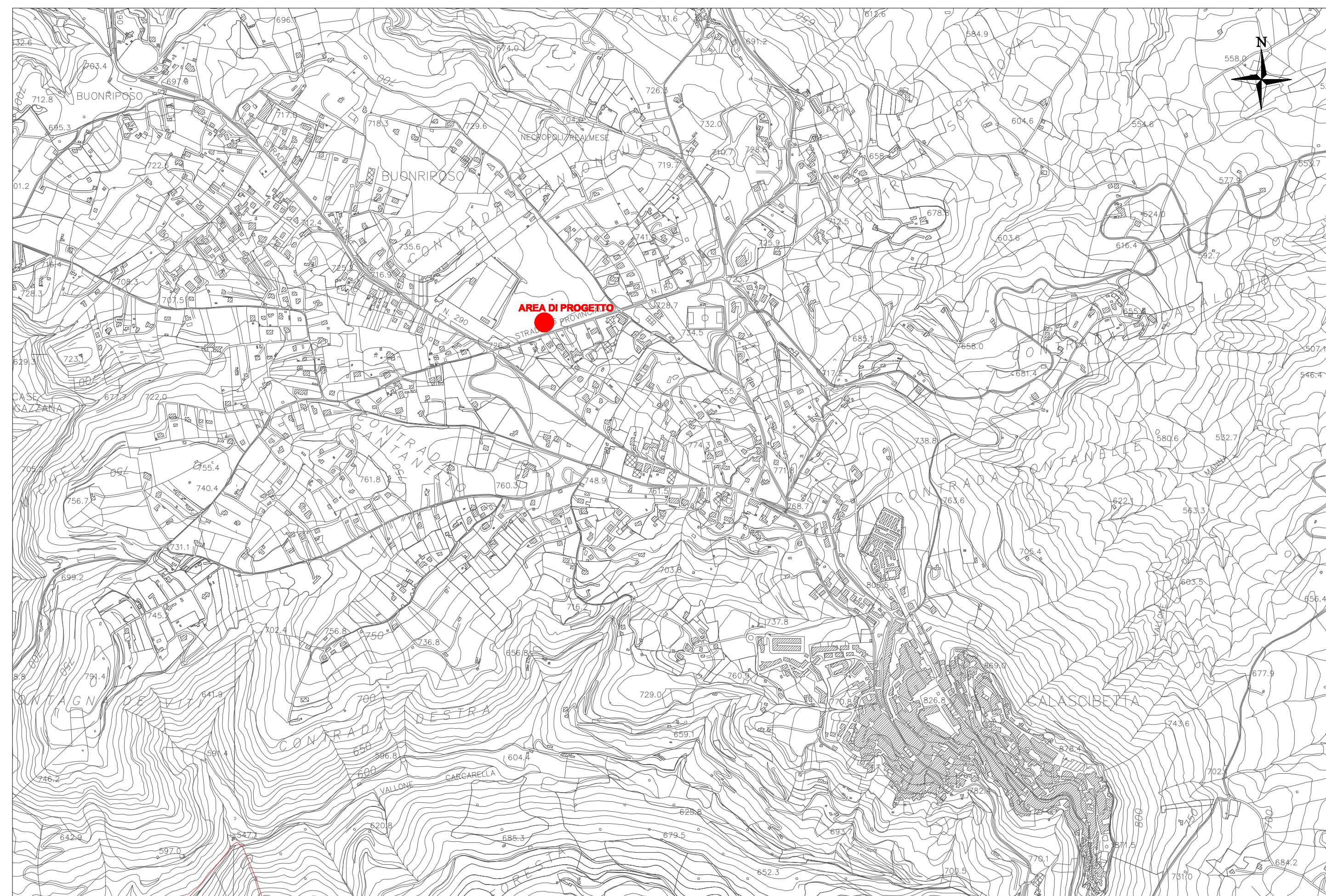


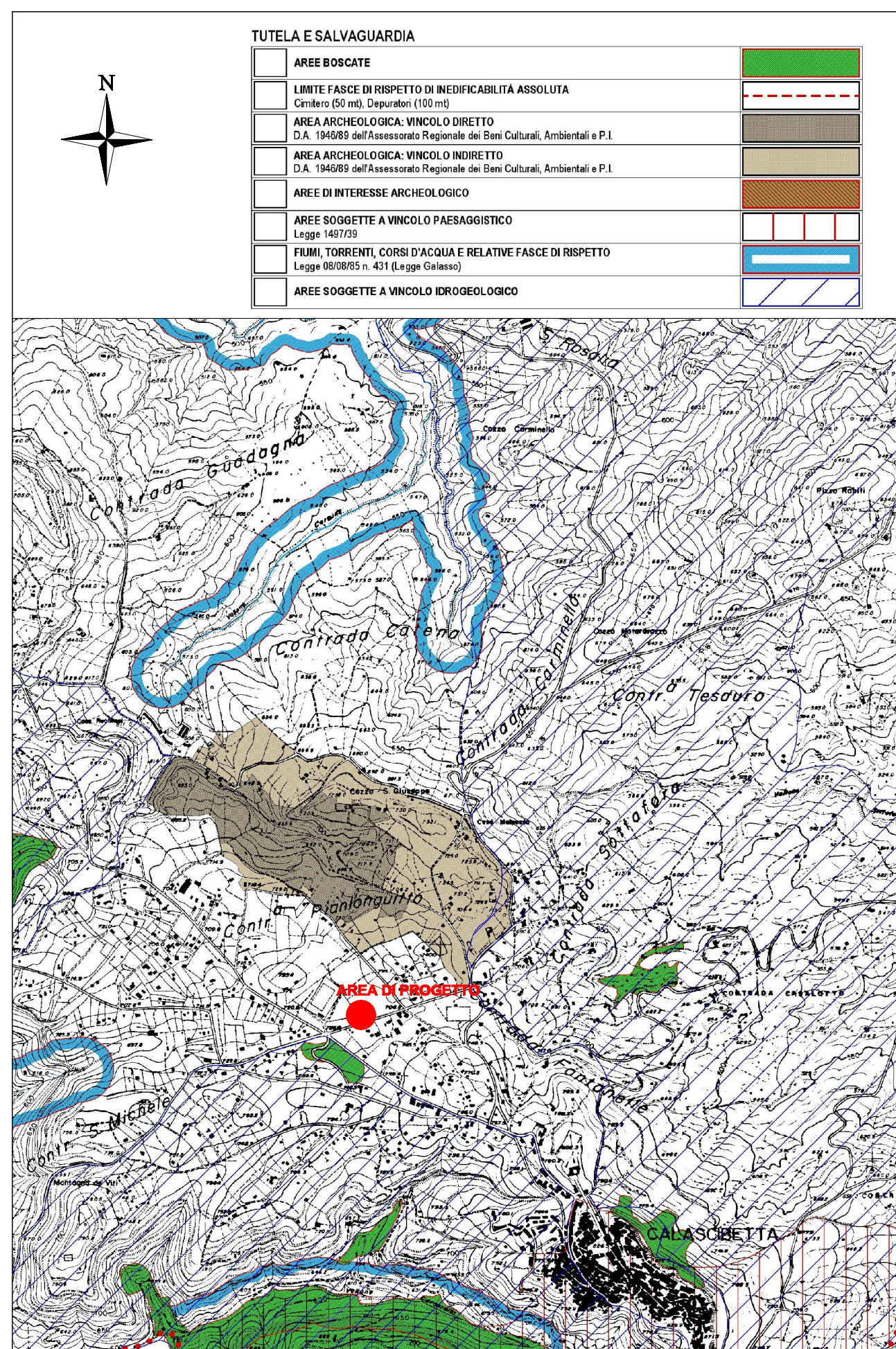
I.G.M. - TAVOLETTA 268 I NO (scala 1:25000)



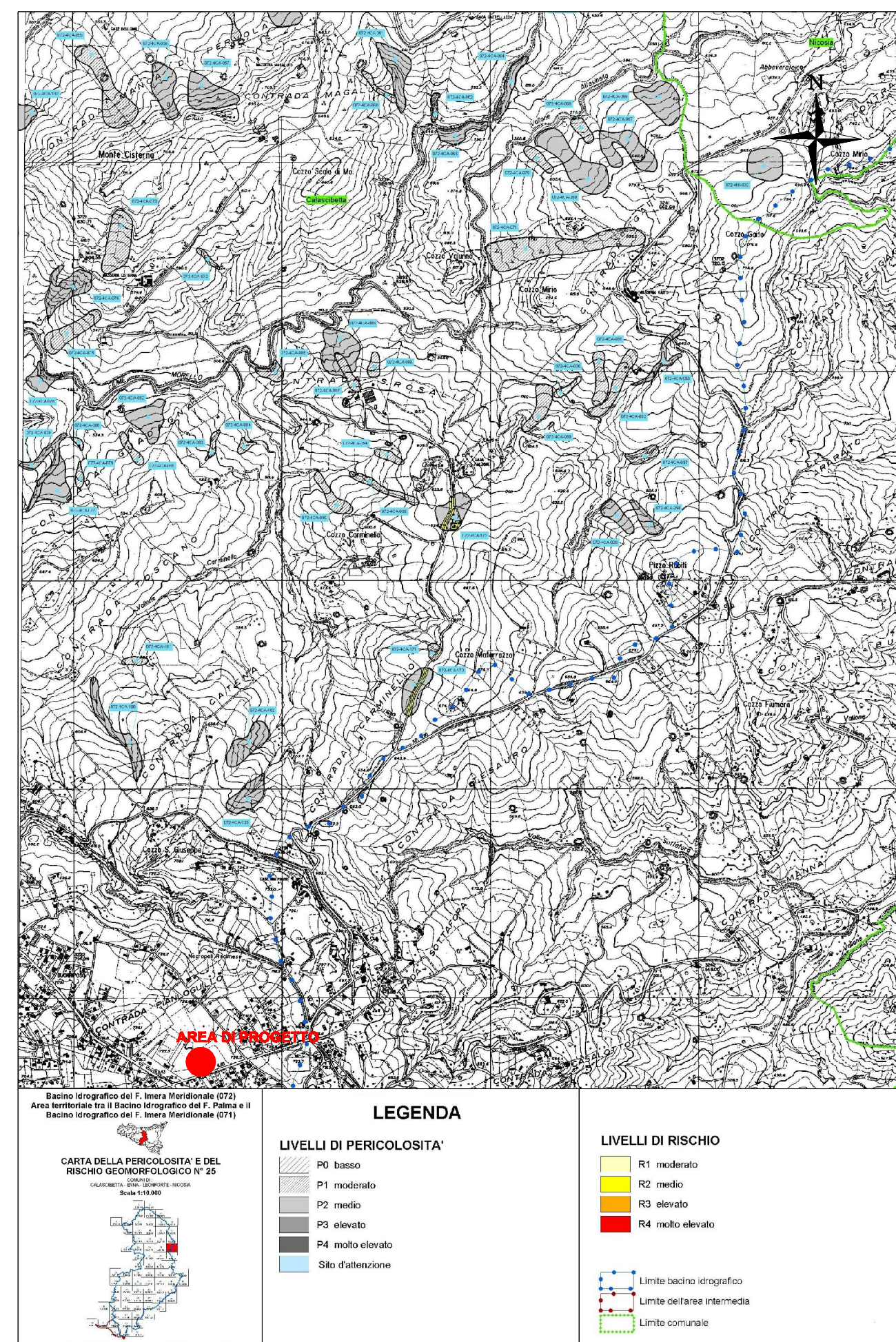
P.A.I. - DISSESTI (scala 1:25000)



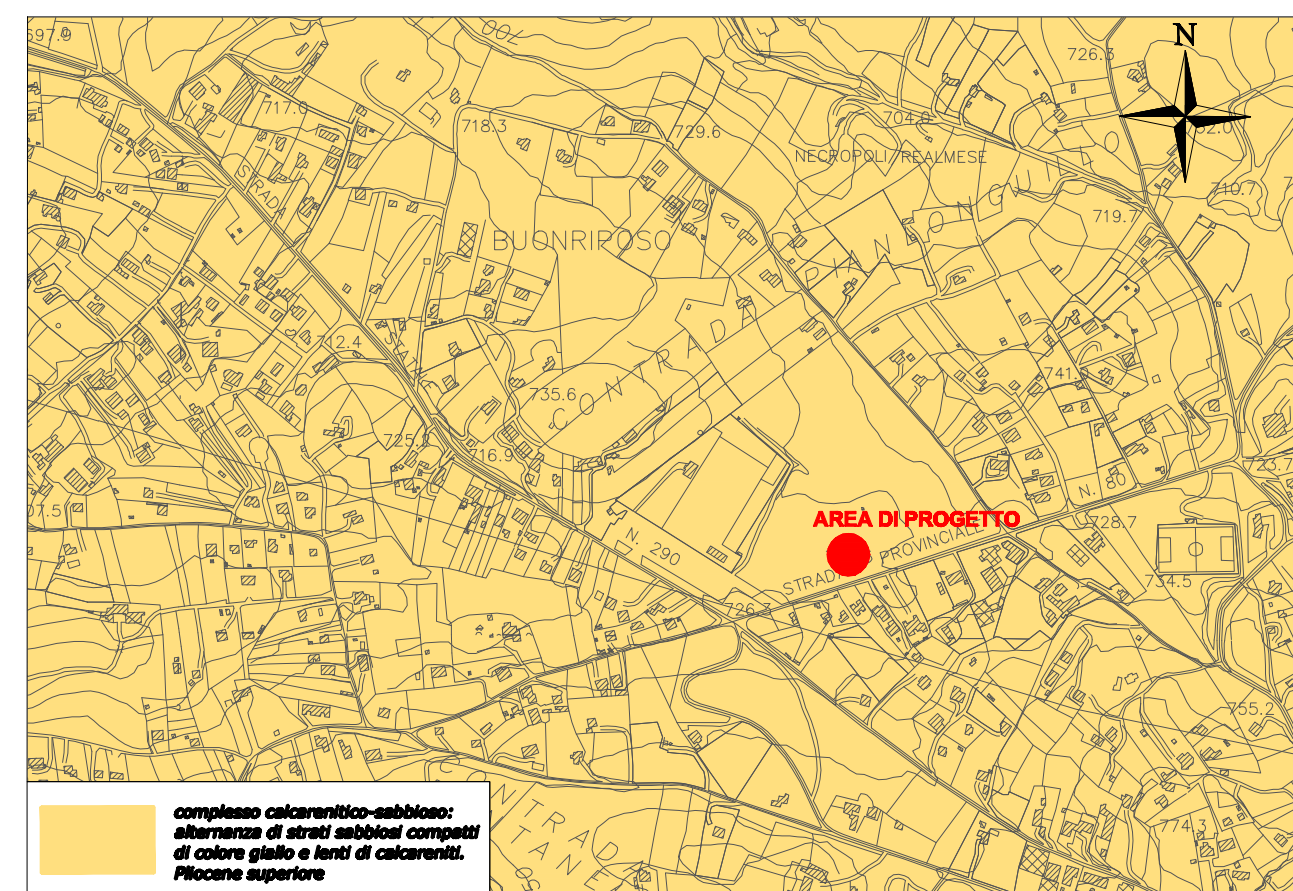
CARTA TECNICA REGIONALE - FOGLIO 622160 (scala 1:10000)



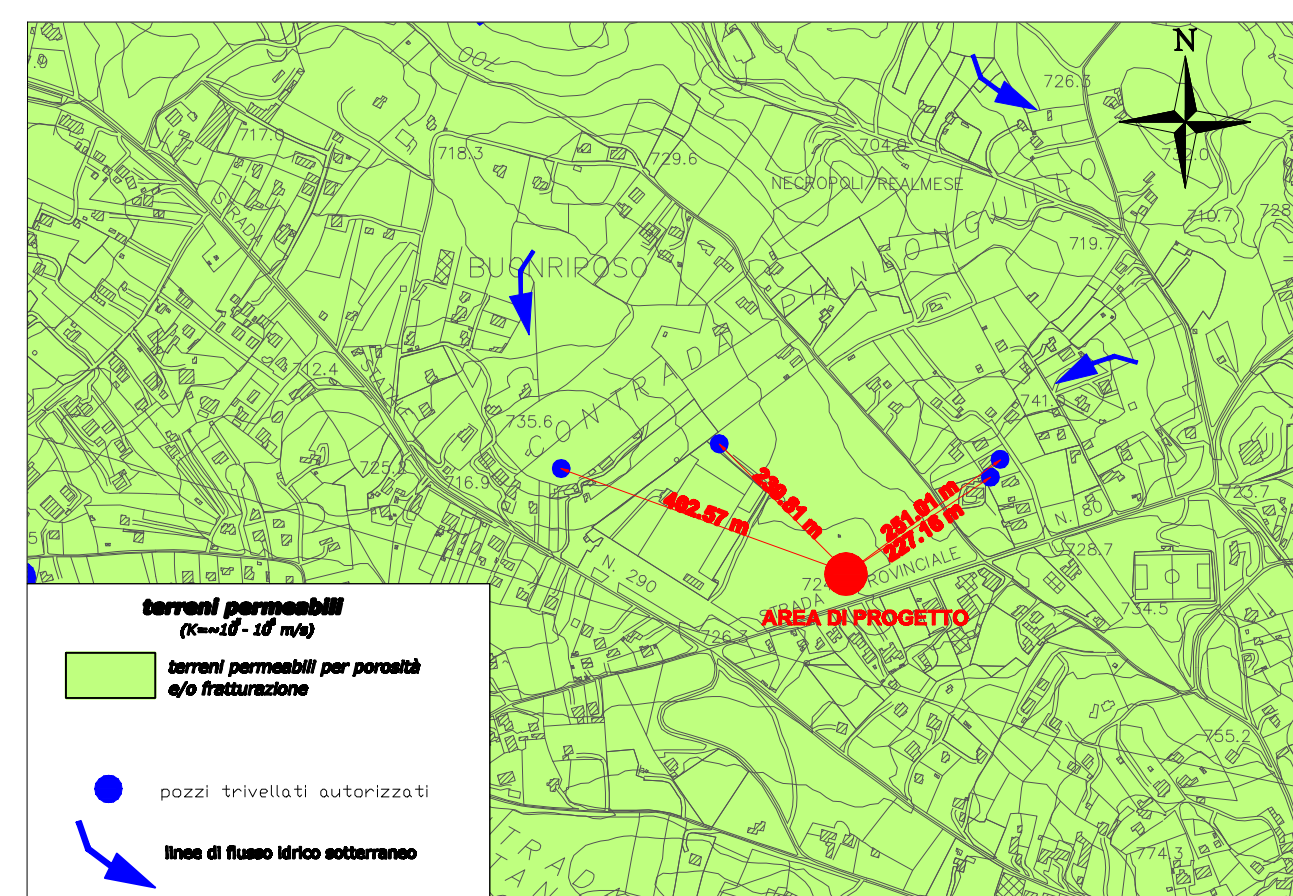
VINCOLI TERRITORIALI (scala 1:25000) - tratta da tavola B1.4 P.R.G.









P.A.I. - PERICOLOSITA' E RISCHIO GEOMORFOLOGICO (scala 1:25000)



CARTA GEOLOGICA (scala 1:10000)



CARTA IDROGEOLOGICA (scala 1:10000)

<div><div>Finanziato dall'Unione europea NextGenerationEU</div></div> <div></div> <div><div>REGIONE SICILIANA</div></div> <div><div>PROVINCIA DI PALERMO</div></div> <div><div>COMUNE DI CALASCIBETTA</div></div> <div><div>MINISTERO DELLA TRANSIZIONE ECOLOGICA</div></div>	
<div>OGGETTO:</div> <div>PNRR AVVISO M2C1.1 I1.1 LINEA A REALIZZAZIONE DI UN CENTRO COMUNALE PER LA RACCOLTA DIFFERENZIATA DEI RIFIUTI CUP J32F23000020001</div>	
<div>UBICAZIONE:</div>	<div>CONTRADA PIANOLONGUILLO</div>
<div>PROGETTO ESECUTIVO</div>	
<div>TITOLO ELABORATO:</div> <div>INQUADRAMENTO TERRITORIALE</div> <div><div>- STRALCIO I.G.M.</div><div>- CARTA DEI VINCOLI</div><div>- STRALCIO P.A.I.</div><div>- STRALCIO C.T.R.</div><div>- CARTA GEOLOGICA</div><div>- CARTA IDROGEOLOGICA</div></div>	<div>NUMERO ELABORATO:</div> <div>T.1</div> <div>Scala: 1:25000-1:10000</div>
<div>I PROGETTISTI:</div> <div>RTIP</div> <div><div>ING. DARIO ACCORBO</div><div>ING. LUIGI SOTERA</div><div>ARCH. MARIELLA RINALDI</div></div>	<div>IL R.U.P.</div> <div>ARCH. NICOLÒ MAZZA</div>
<div>REV. 03</div>	
<div>NOVEMBRE 2023</div>	
<div>SPAZIO RISERVATO PER LE VIDUAZIONI:</div>	