



**Finanziato
dall'Unione europea**
NextGenerationEU



*Ministero dell'Istruzione
dell'Università e Ricerca*



**REGIONE
SICILIANA**



Comune di Pietraperzia

Libero Consorzio Comunale di Enna

PROGETTO DEFINITIVO ED ESECUTIVO

(redatto ai sensi dell'art.23 del D.Lgs 50/2016 e ss.mm.ii.)

**OGGETTO: "Interventi di messa in sicurezza e riqualificazione dell'edificio scolastico
G.Verga" CUP: J46F19000020001**



D. STRUTTURALE – INTERVENTI DI MESSA IN SICUREZZA

ELABORATO n. D.5.2)

RISULTATI GRAFICI CORPO B – STATO FUTURO

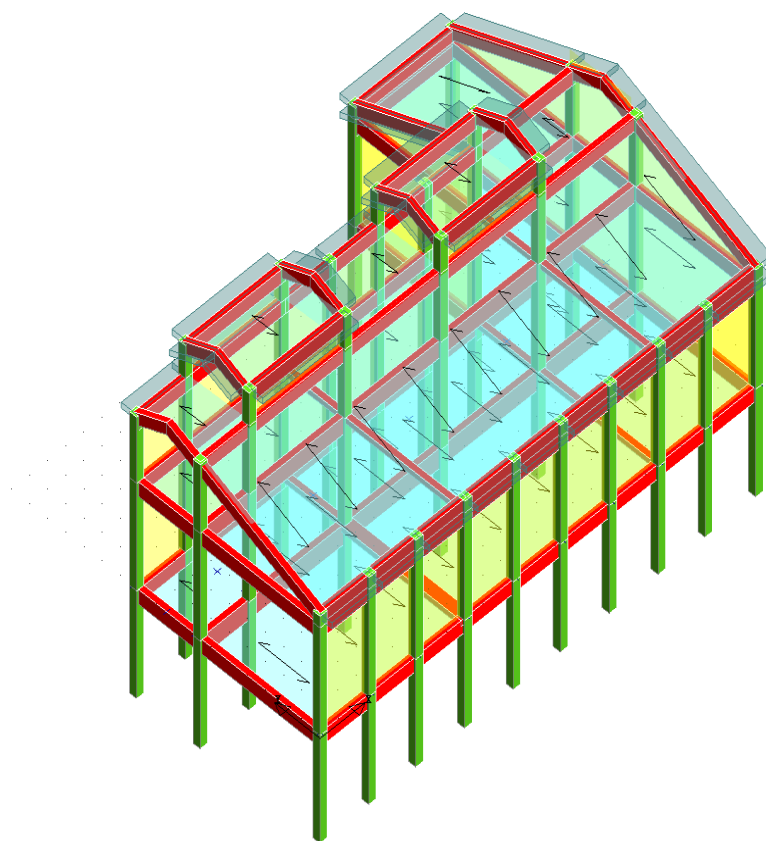
Visti:

IL TECNICO
Arch. Sheila VINTI

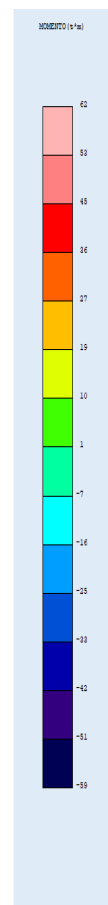
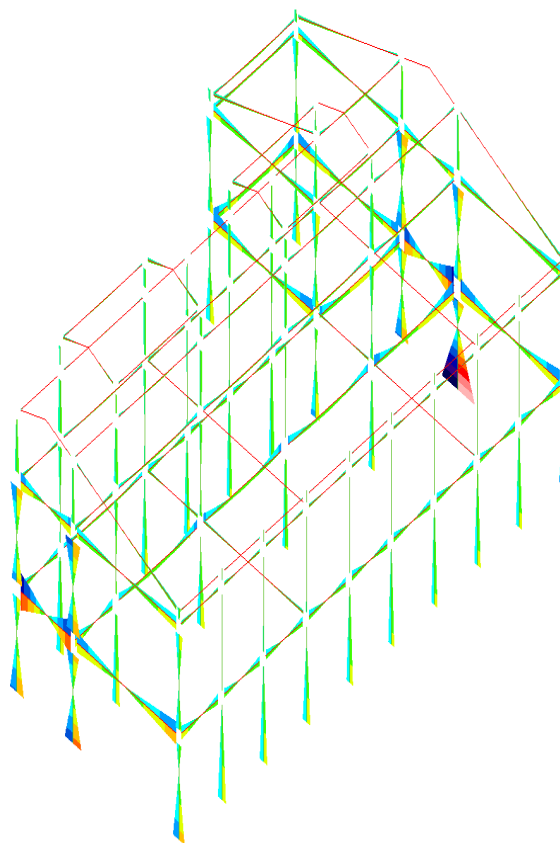
IL RUP
Geom. Rocco BONGIOVANNI

Pietraperzia lì 24/09/2022

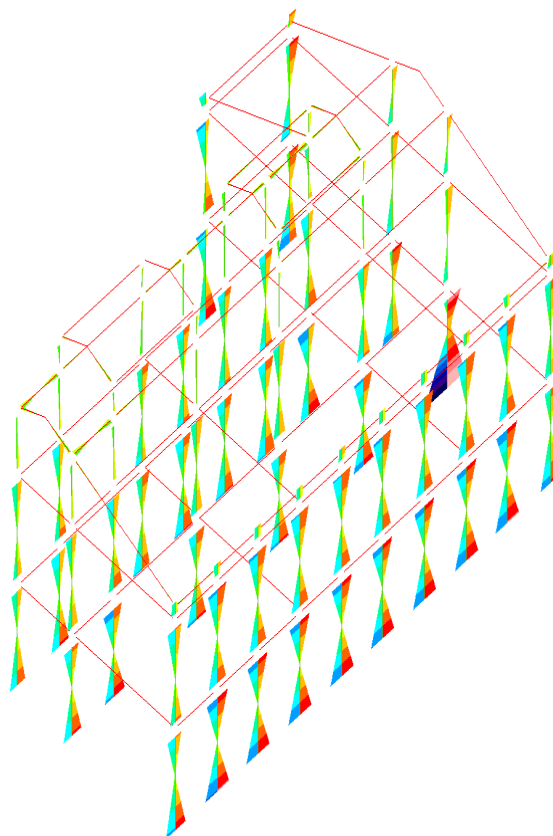
RAPPRESENTAZIONI GRAFICHE OUTPUT STRUTTURA



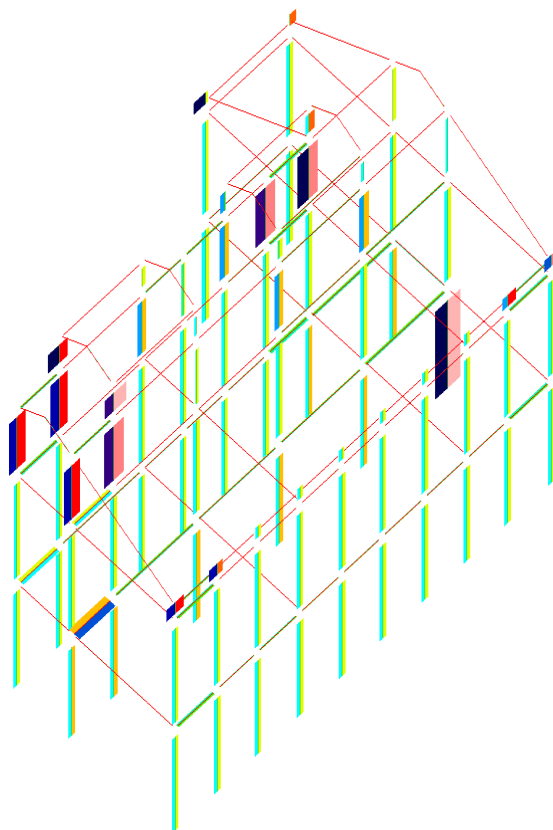
IMMAGINE



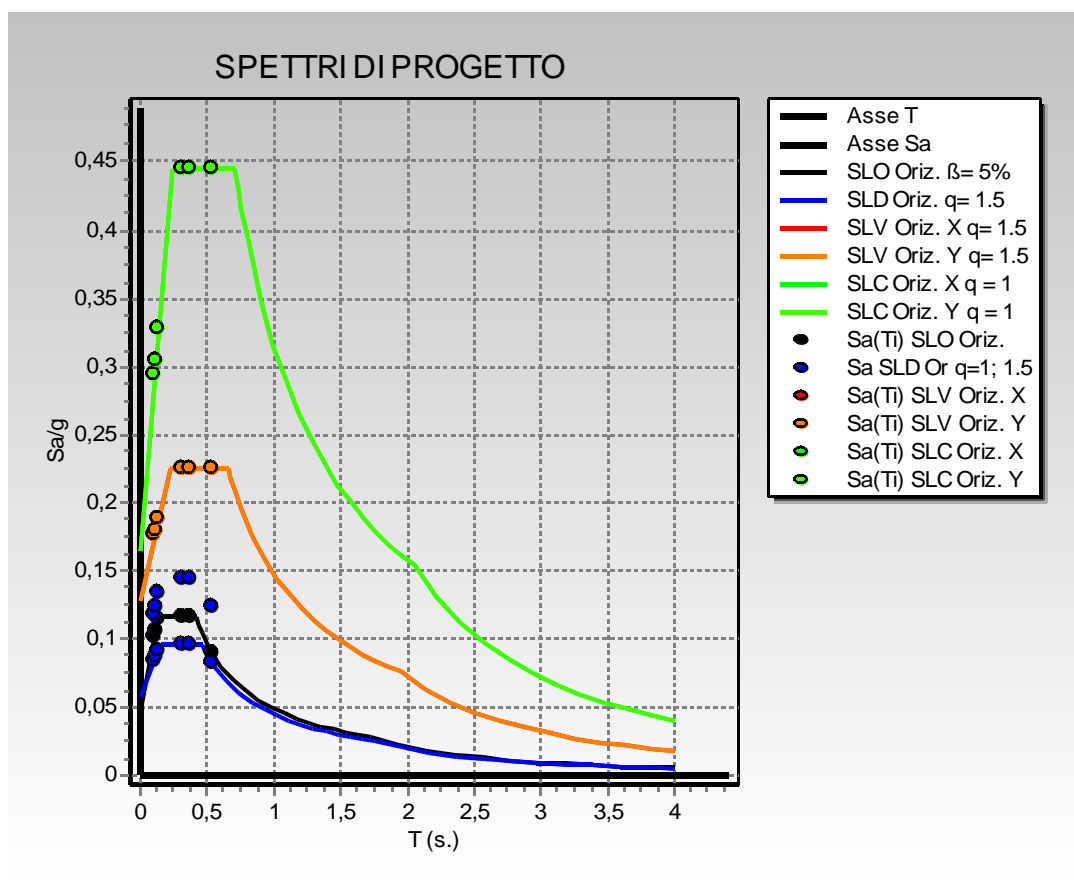
MOMENTO COMB. INVILUPPO X



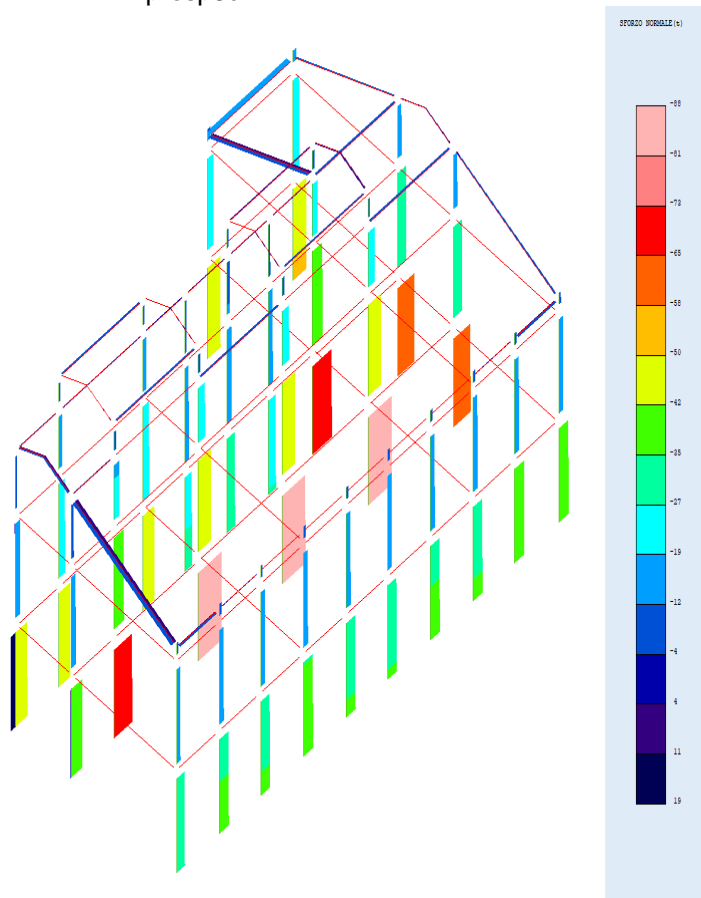
MOMENTO COMB.INVILUPPO Y



MOMENTO COMB.INVILUPPO Z

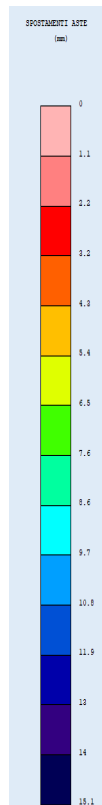
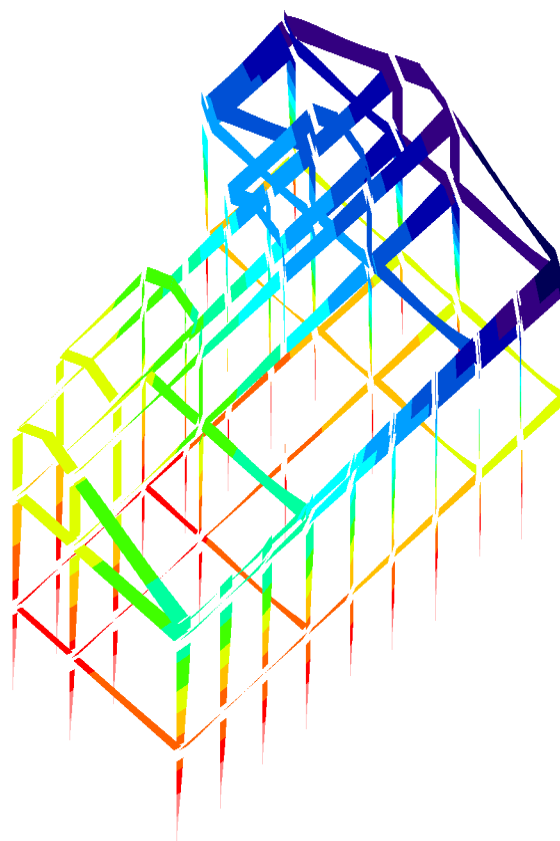


prosp3d

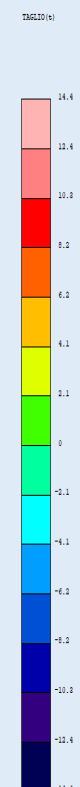
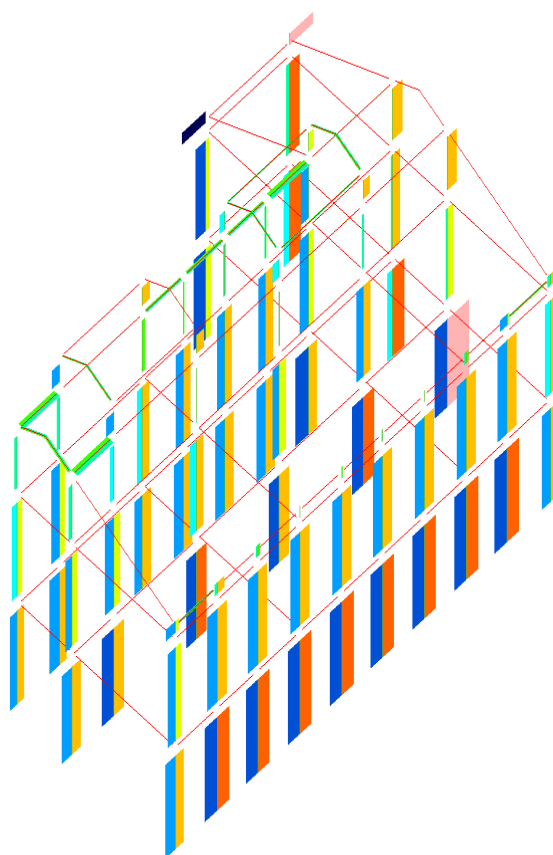


SFORZO NORMALE COMB.INVILUPPO

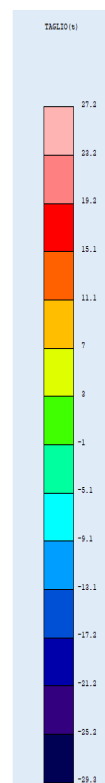
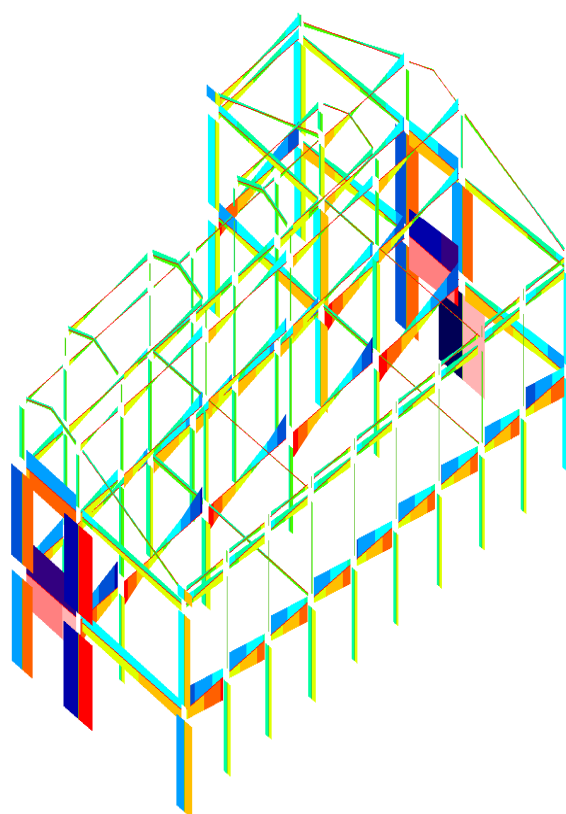
RAPPRESENTAZIONI GRAFICHE OUTPUT STRUTTURA



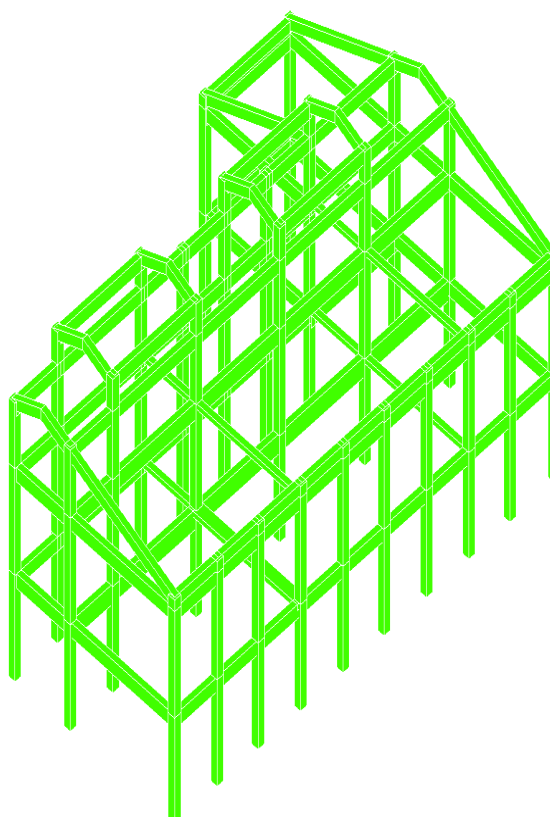
SPOSTAMENTI ASTE COMBINAZ.N. 9



TAGLIO COMB.INVILUPPO X

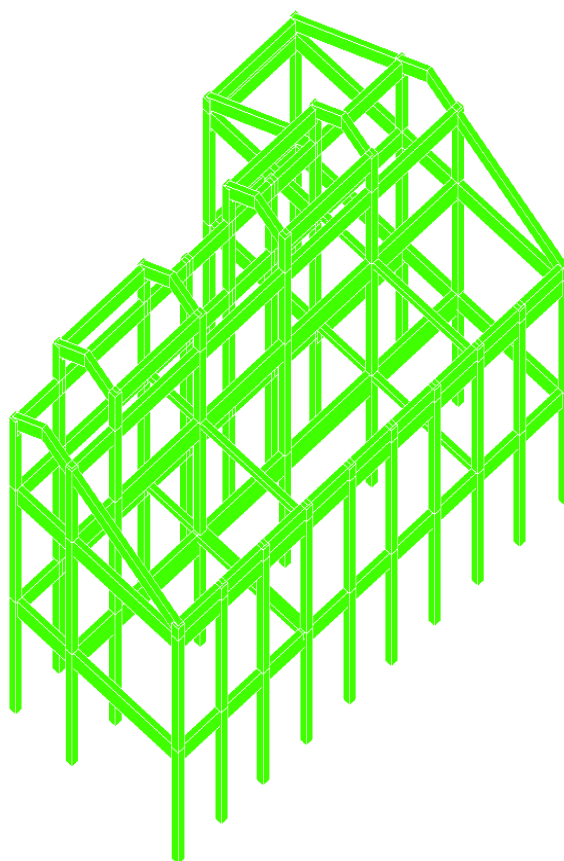


TAGLIO COMB. INVILUPPO Y



VERIFICA ASTE A PRESSO-FLESSIONE

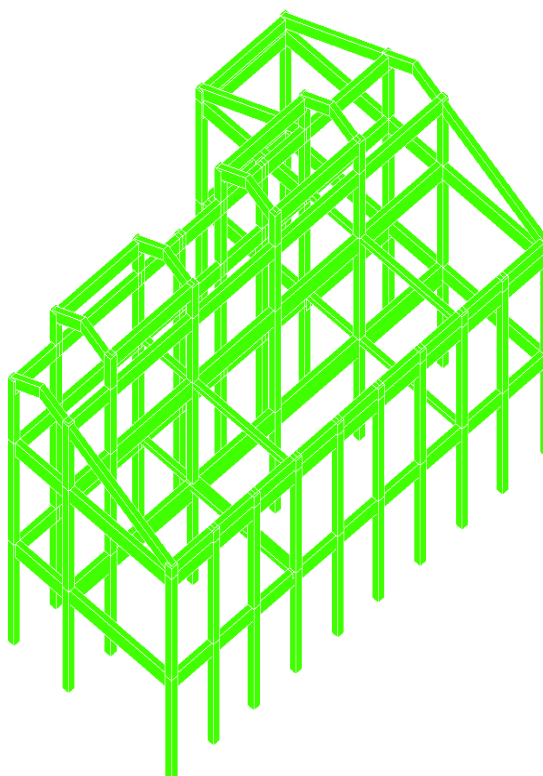
RAPPRESENTAZIONI GRAFICHE OUTPUT STRUTTURA



VERIFICA ASTE
A FESSURAZIONE



VERIFICA ASTE A FESSURAZIONE

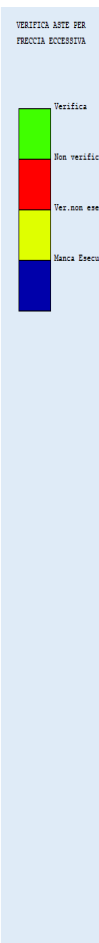
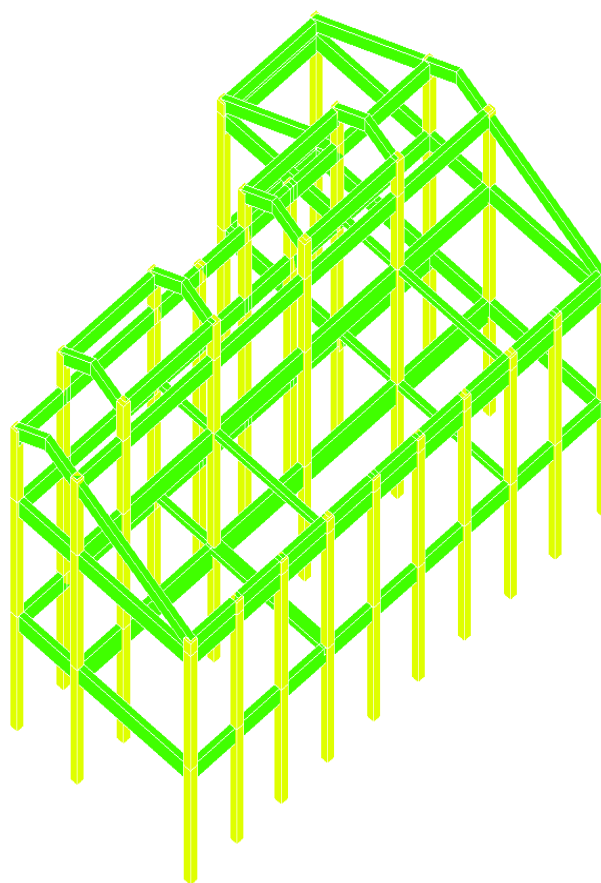


VERIFICA ASTE
A TAGLIO SLU



VERIFICA ASTE A TAGLIO SLU

RAPPRESENTAZIONI GRAFICHE OUTPUT STRUTTURA



VERIFICA ASTE PER FRECCIA ECCESSIVA