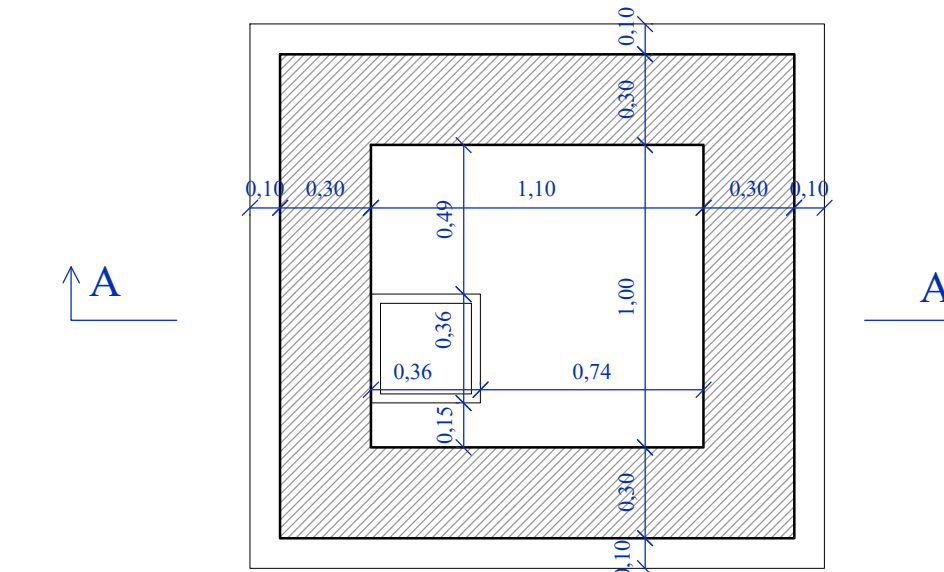
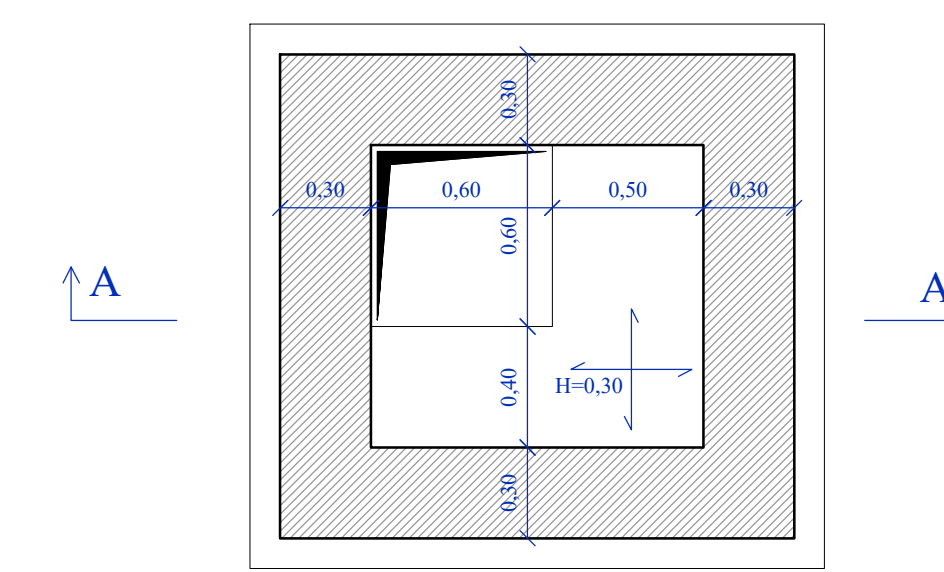


PARTICOLARE POZZETTO DI SCARICO RETE INTERNA

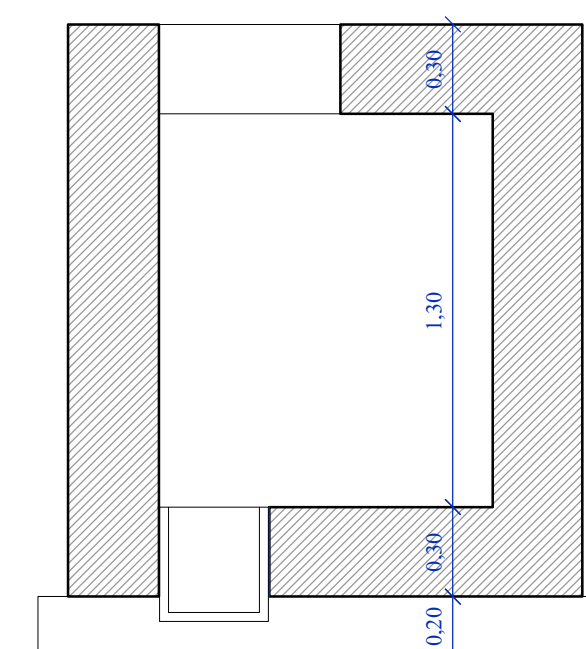
CARPENTERIA FONDAZIONE - R=1:25



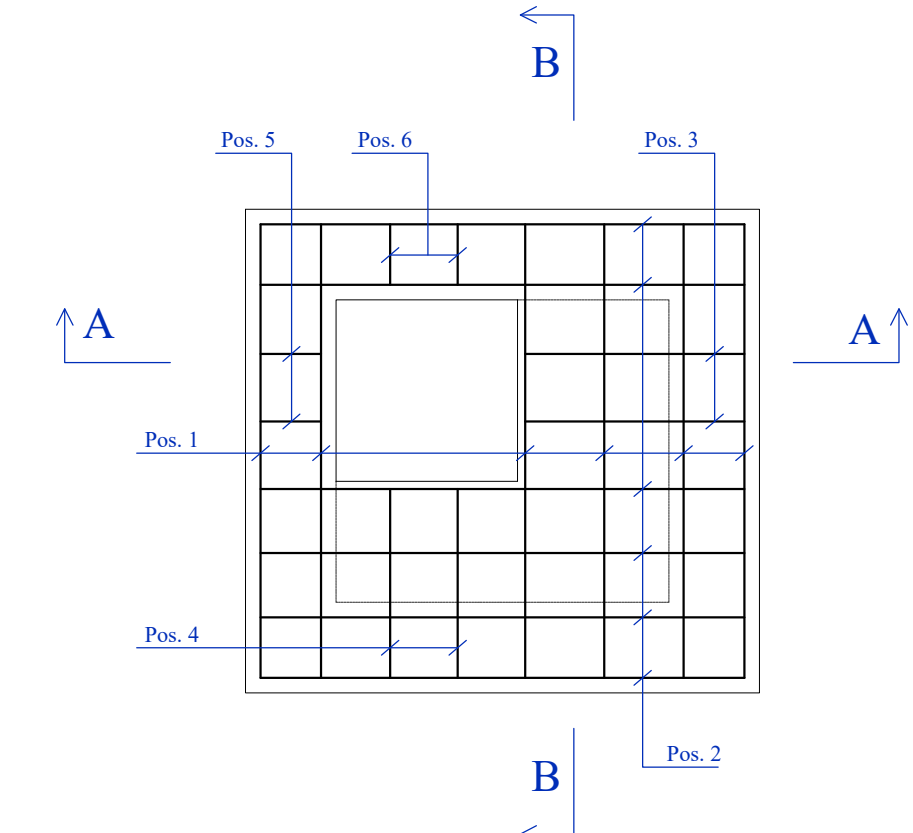
CARPENTERIA COPERTURA - R=1:25



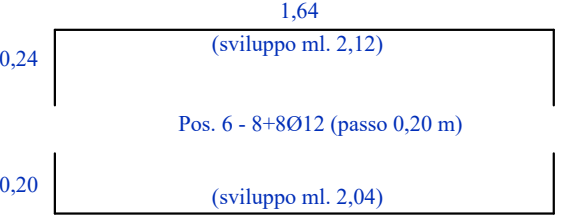
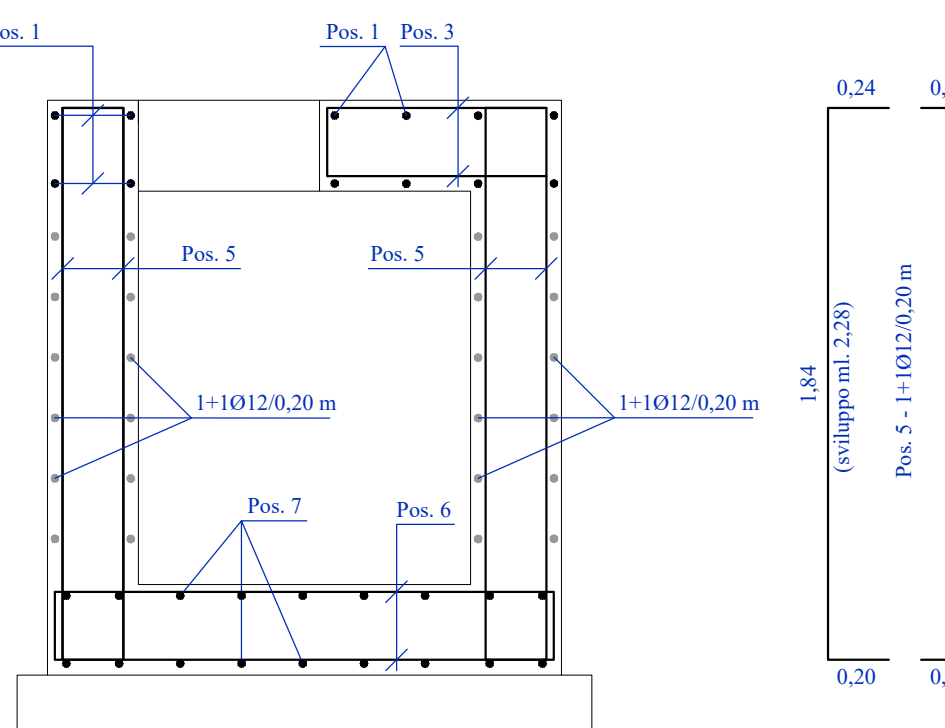
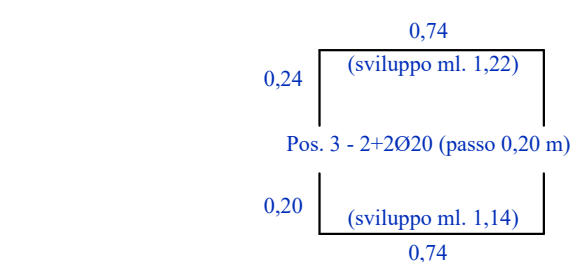
SEZIONE A-A - R=1:25



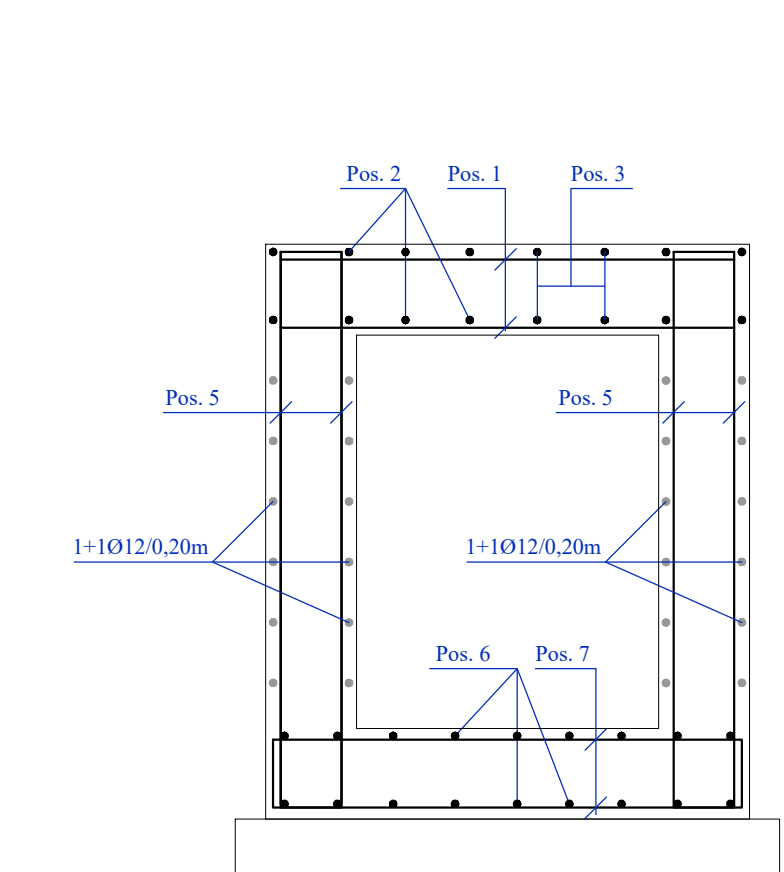
PIANTA ARMATURA SOLETTA - R=1:25



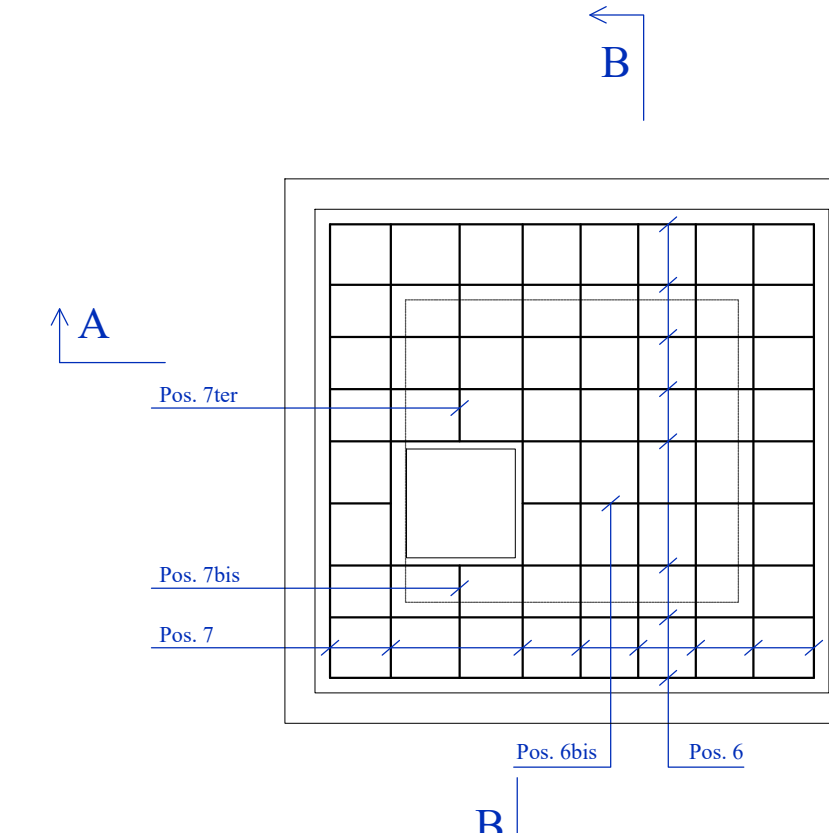
SEZIONE A-A - R=1:25



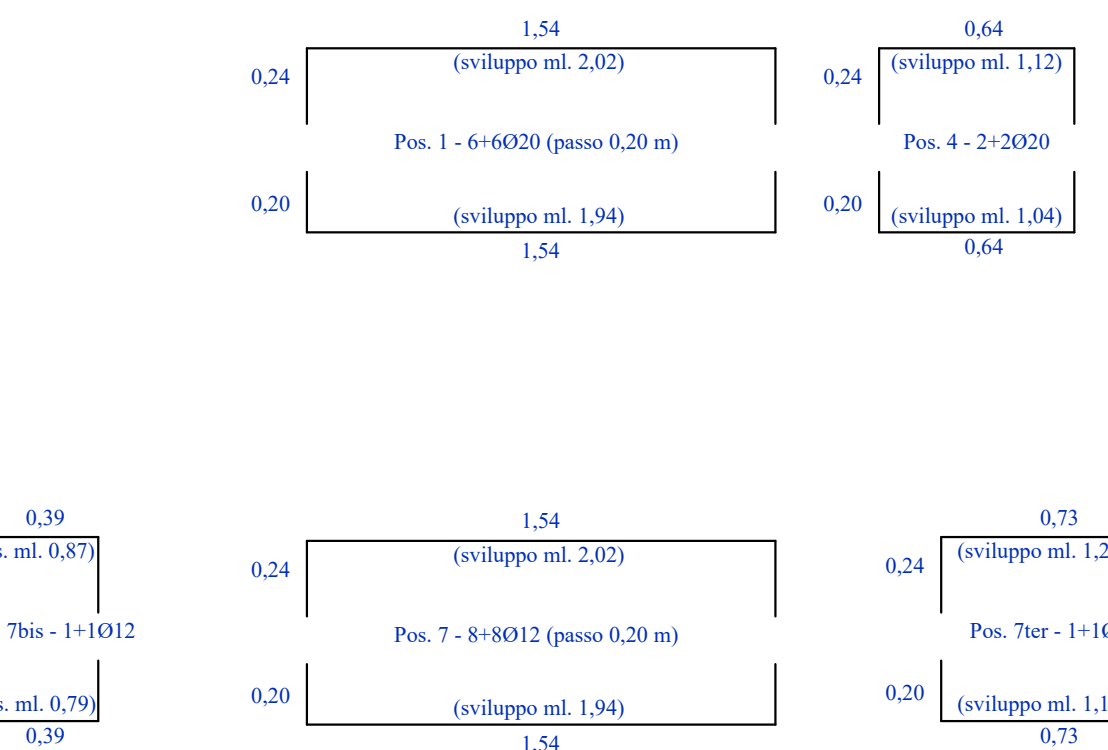
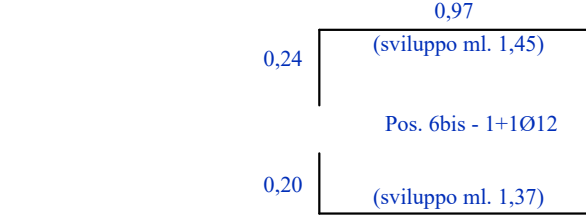
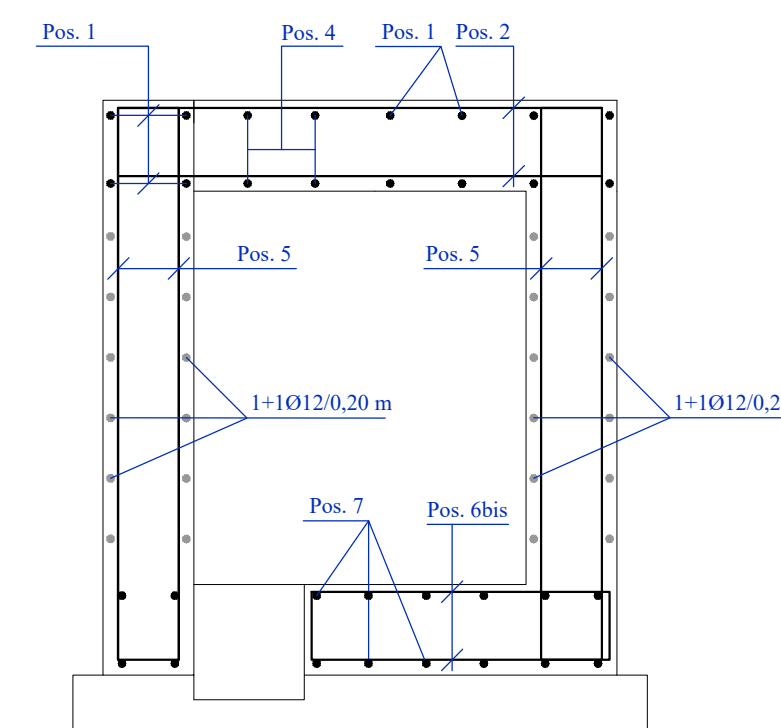
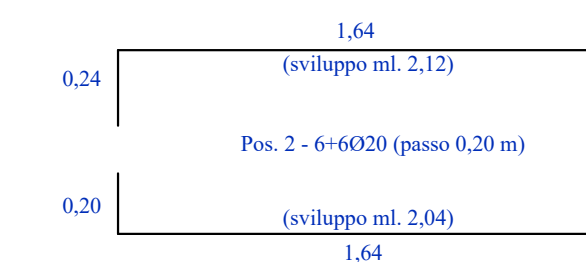
SEZIONE B-B - R=1:25



PIANTA ARMATURA BASE - R=1:25

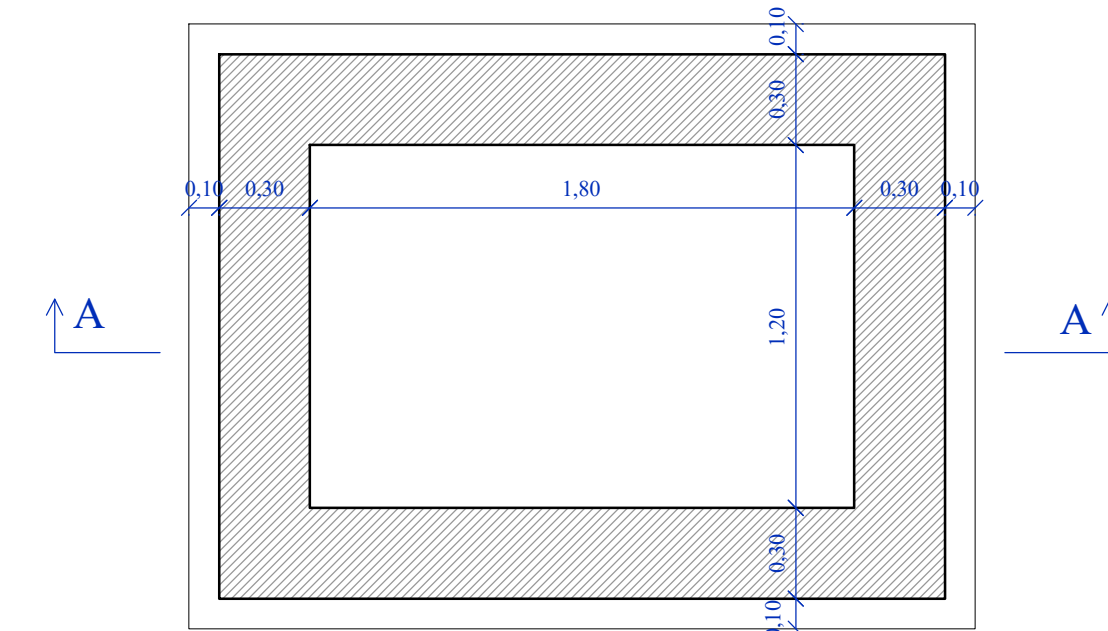


SEZIONE A'-A' - R=1:25

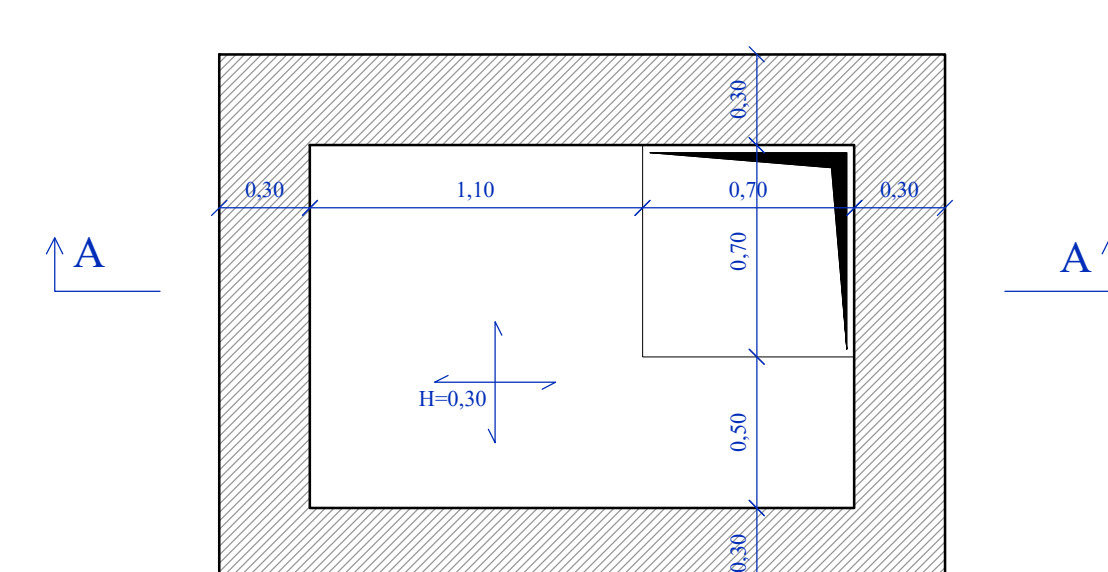


PARTICOLARE POZZETTO DI SFIATO

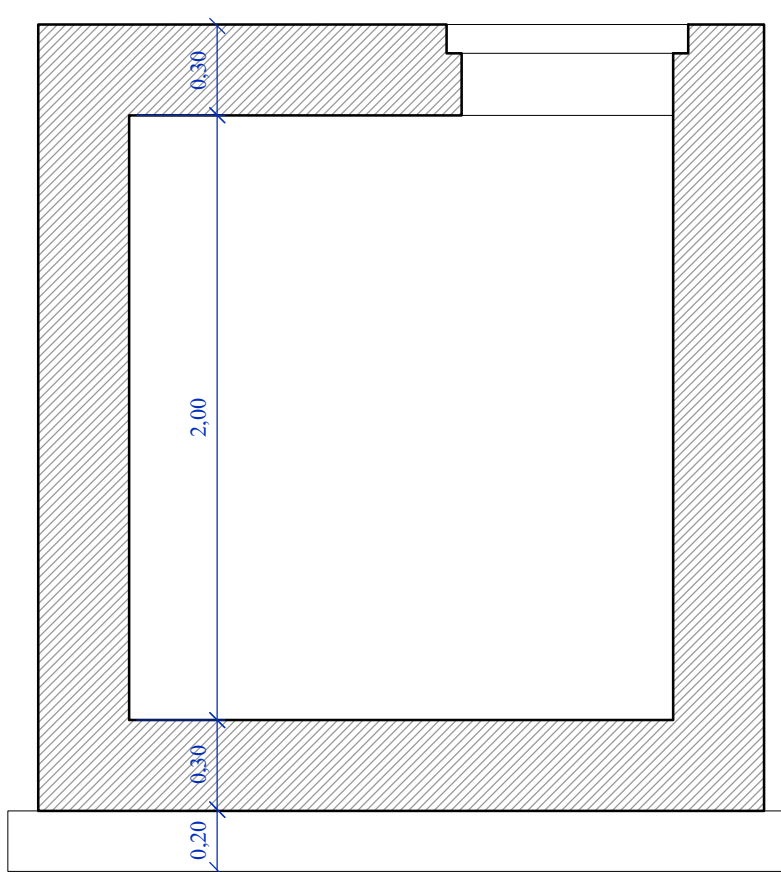
CARPENTERIA FONDAZIONE - R=1:25



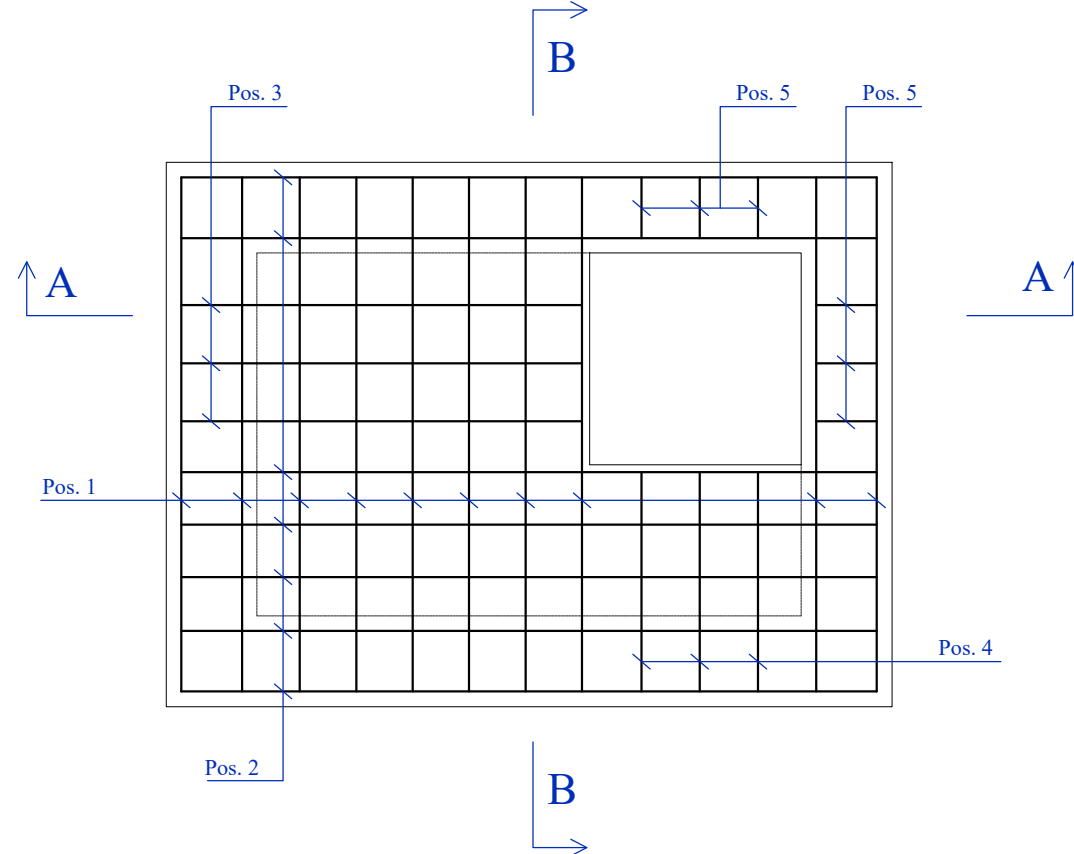
CARPENTERIA COPERTURA - R=1:25



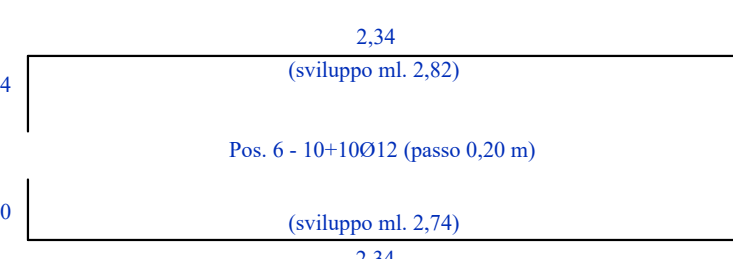
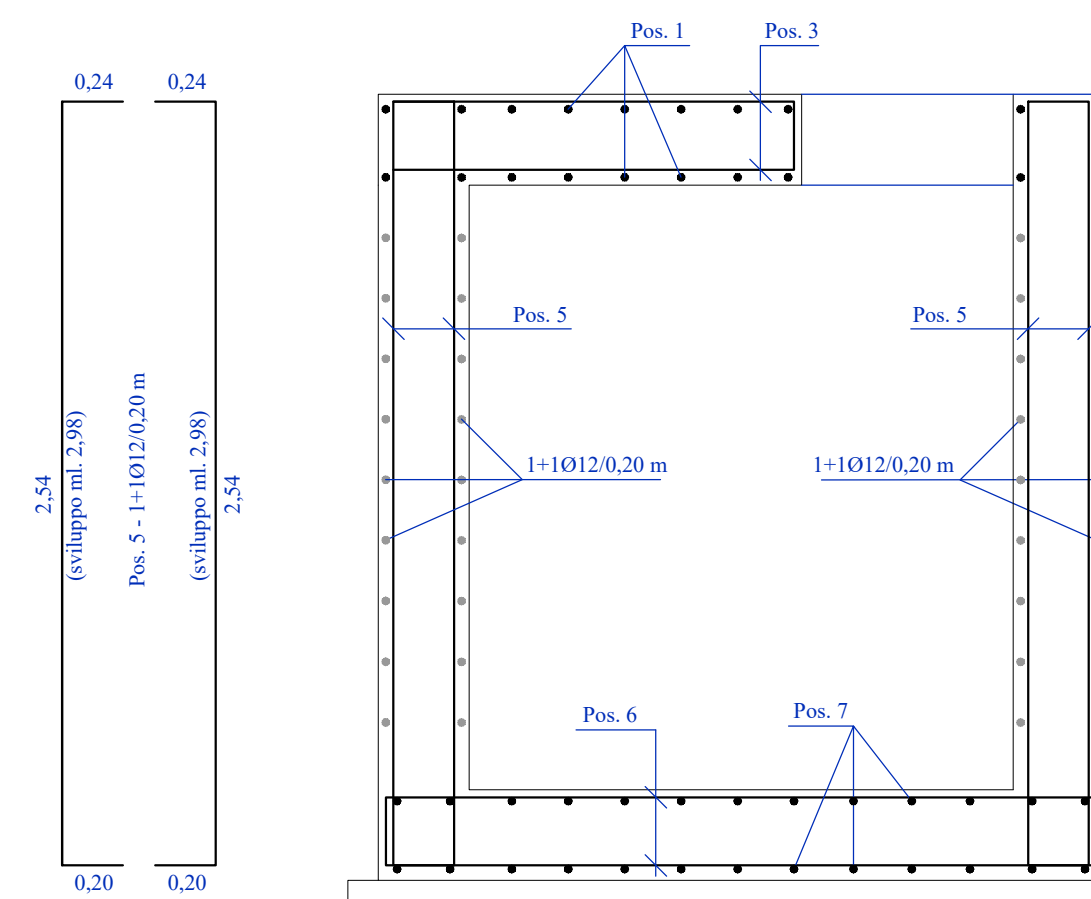
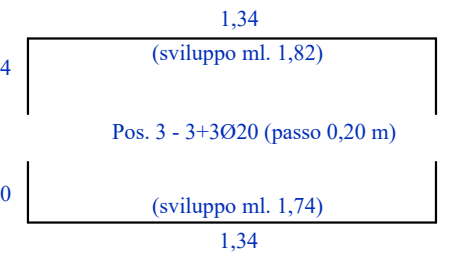
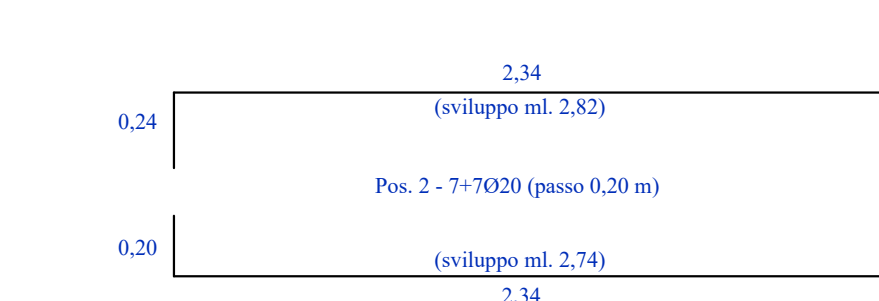
SEZIONE A-A - R=1:25



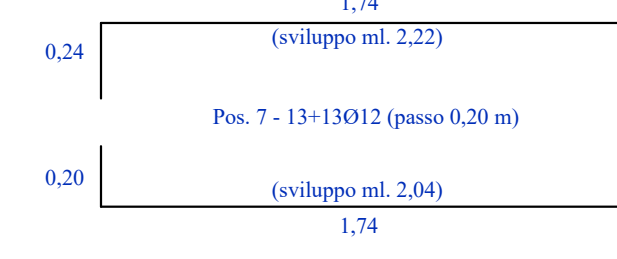
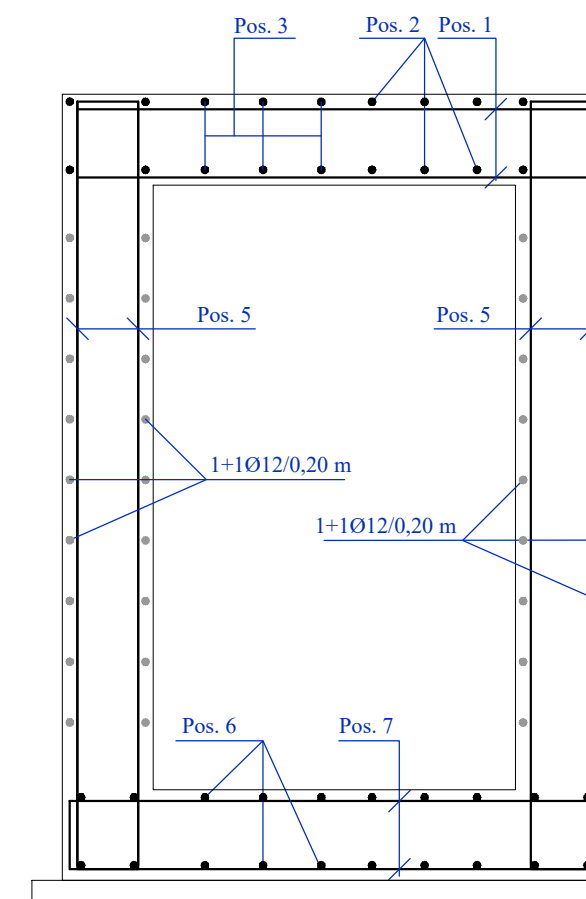
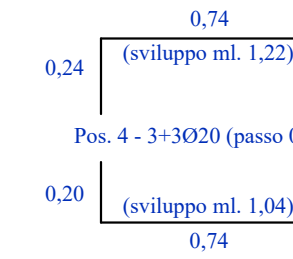
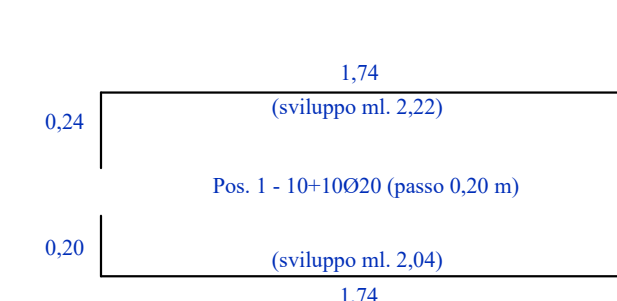
PIANTA ARMATURA SOLETTA - R=1:25



SEZIONE A-A - R=1:25

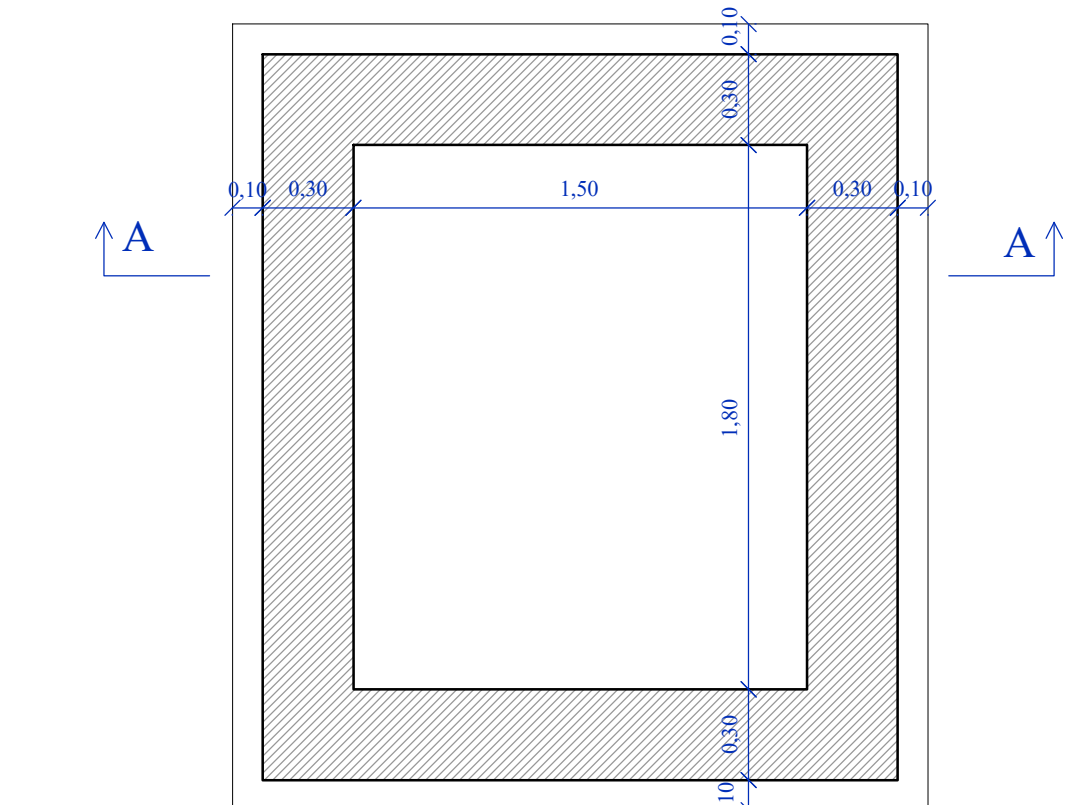


SEZIONE B-B - R=1:25

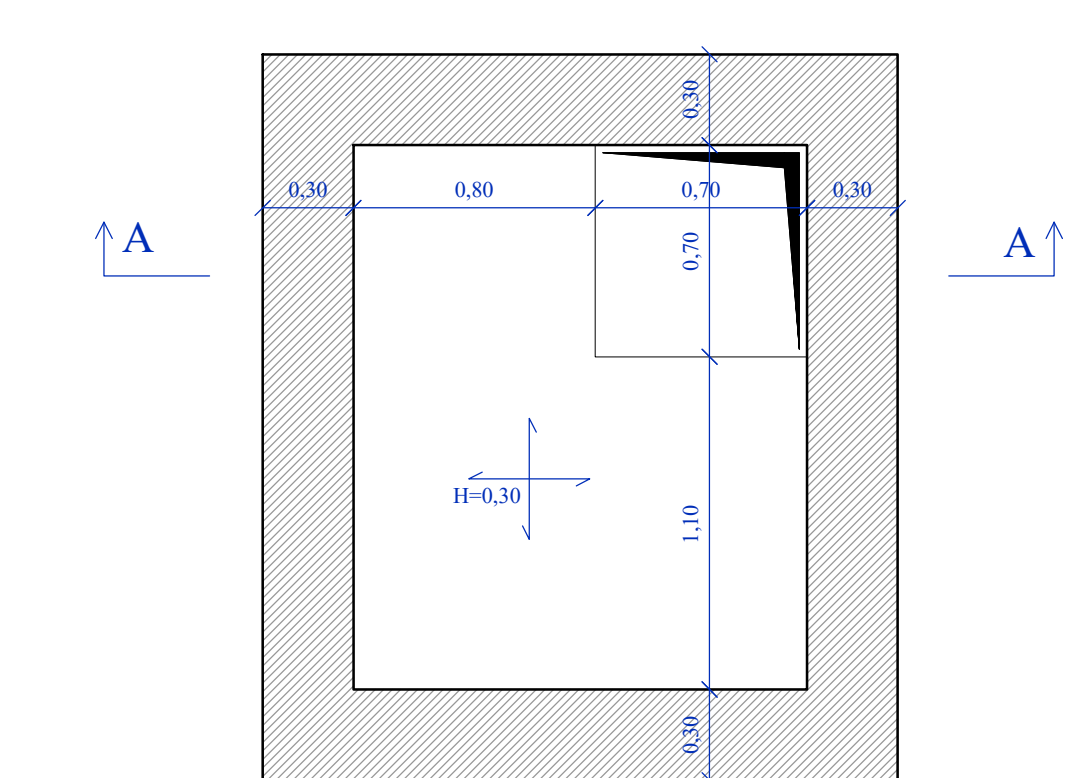


PARTICOLARE POZZETTO DI SCARICO

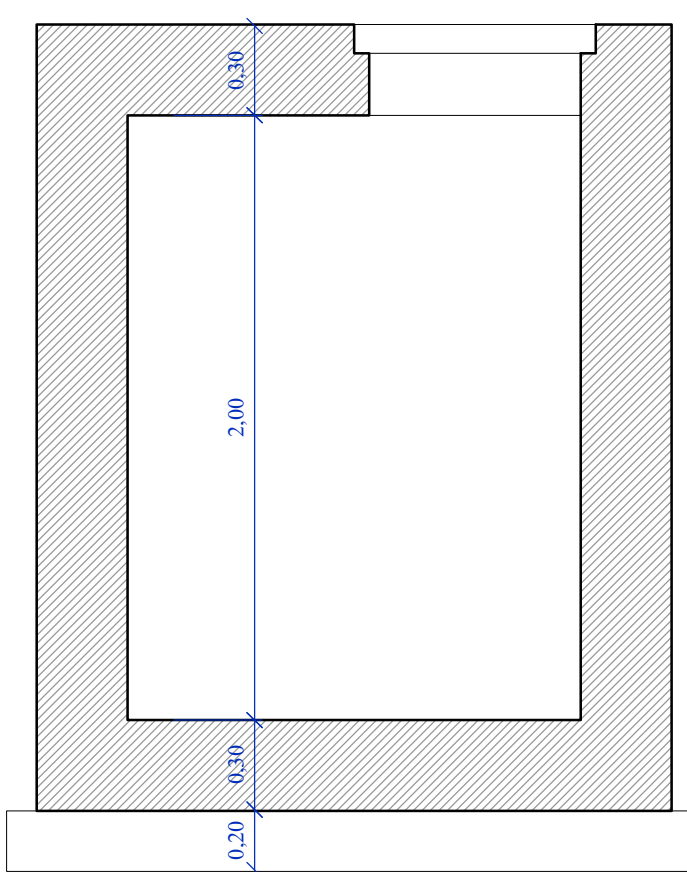
CARPENTERIA FONDAZIONE - R=1:25



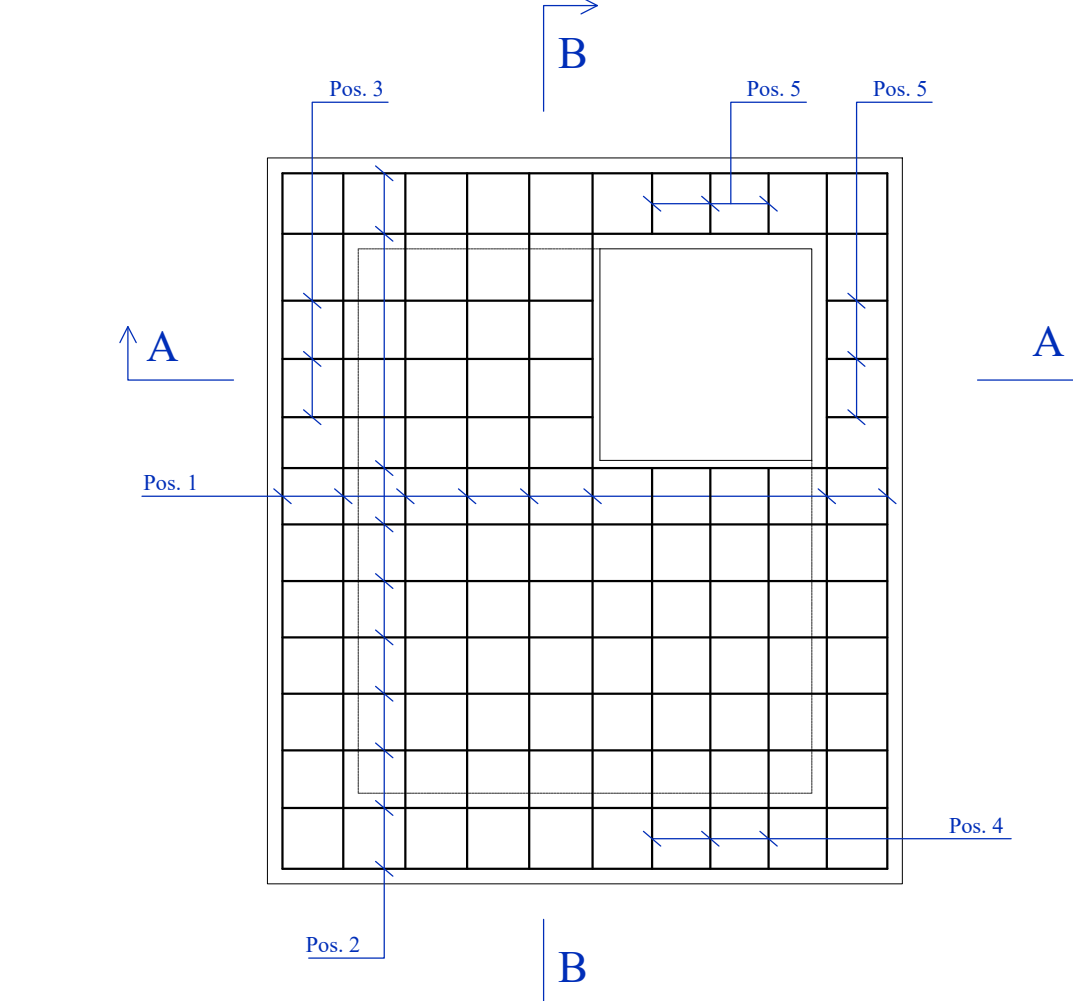
CARPENTERIA COPERTURA - R=1:25



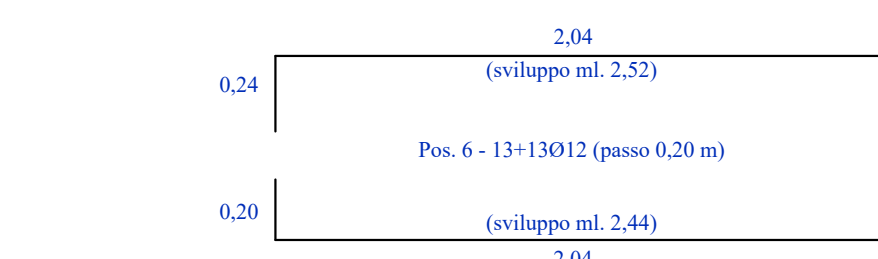
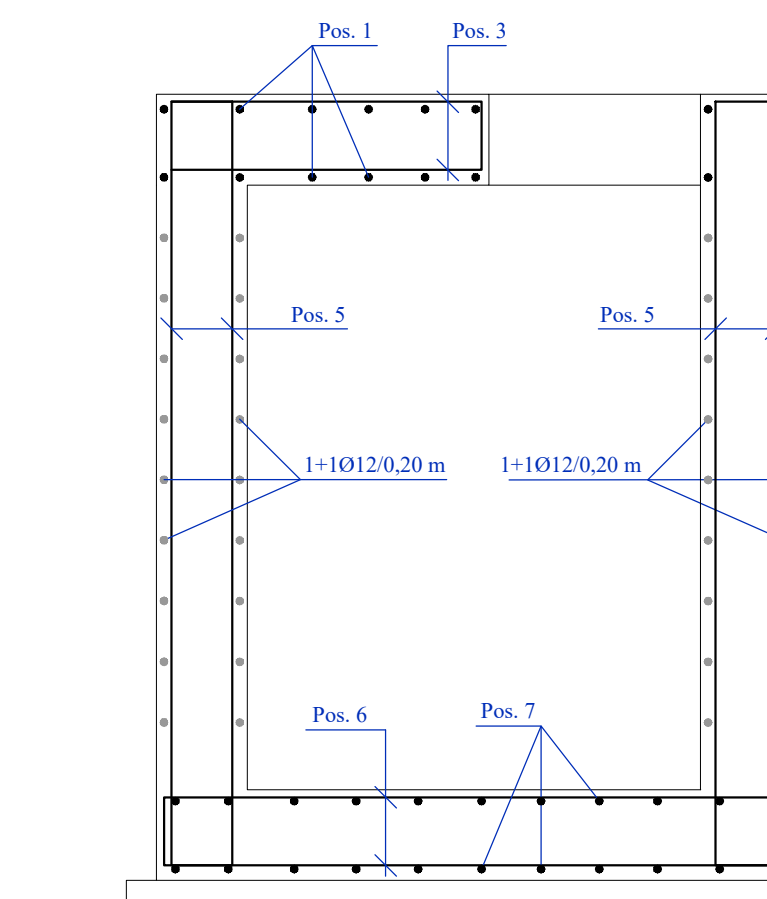
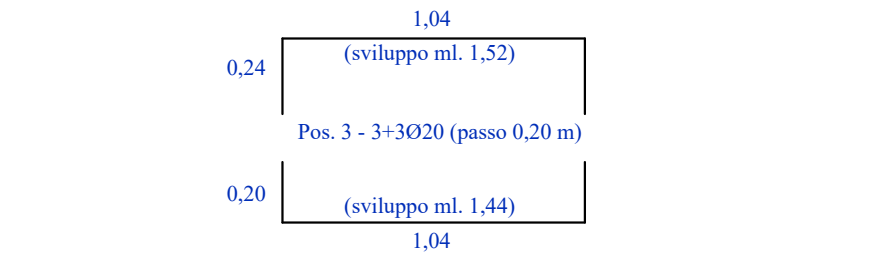
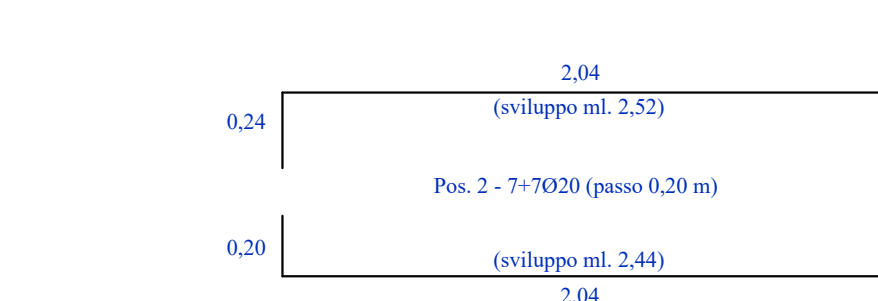
SEZIONE A-A - R=1:25



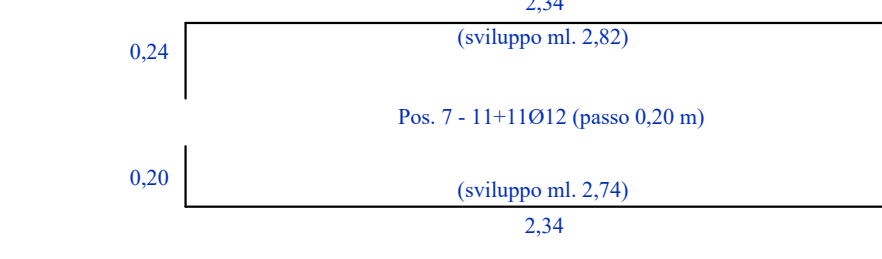
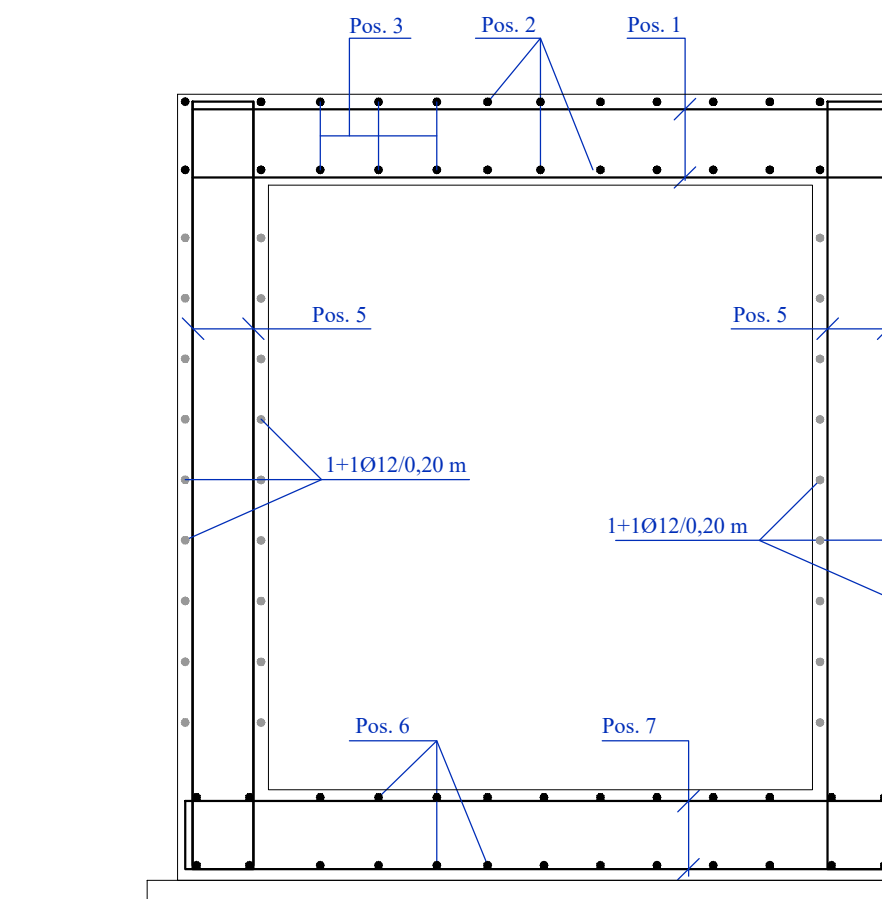
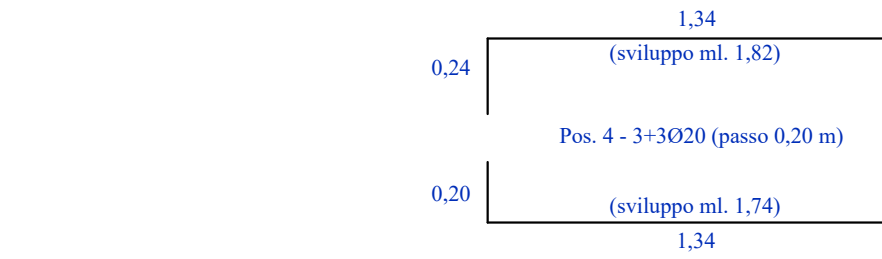
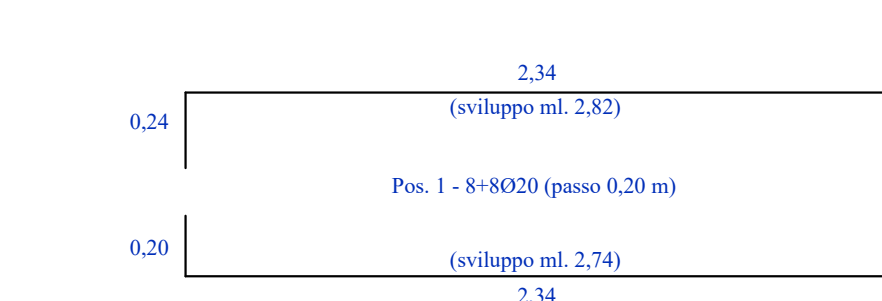
PIANTA ARMATURA SOLETTA - R=1:25



SEZIONE A-A - R=1:25



SEZIONE B-B - R=1:25



CONGLOMERATO CEMENTIZIO				
ELEMENTO STRUTTURALE	CLASSI DI CONSISTENZA	CLASSI DI RESISTENZA R _{ck}	CLASSI DI ESPOSIZIONE	COPRIFERRO MINIMO
MAGRONE	-	15	-	-
FONDAZIONE BASE	S3	30	XC2	3,5
ELEVAZIONE PARETI	S3	30	XC2	3,5
SOLETTA	S3	30	XC2	3,5

ARMATURE PER C.A.	
ACCIAIO AD ADERENZA MIGLIORATA CONTROLLATO IN STABILIMENTO AVENTE LE SEGUENTI CARATTERISTICHE	
- FeB44K SALDABILE PER $\phi \leq 26$ mm.	
- fy/fyk ≥ 1.35 ; (ft/fyk) medio ≤ 1.13 (come D. M. Gen. 1996)	

REGIONE SICILIANA
CONSORZIO AMBITO TERRITORIALE OTTIMALE IDRICO
DI AGRIGENTO

GESTORE DEL SISTEMA IDRICO
INTEGRATO AMBITO TERRITORIALE
OTTIMALE DI AGRIGENTO
L'AMMINISTRATORE DELEGATO

PROGETTO ESECUTIVO

Opere di ristrutturazione ed automazione per ottimizzazione
rete idrica Comune di Agrigento

ALLEGATO N°	TITOLO ELABORATO
21.2.3	Pozzetti di sfiato e scarico Carpenterie
Nome file:	21.2.3 carpenterie_pozzetti di sfiato e scarico.dwg
Scale:	

Visti ed approvazioni:

CUP:				
B	DESCRIZIONE	DATA	VERIFICATO	CONTROLLATO
A				
REV.				