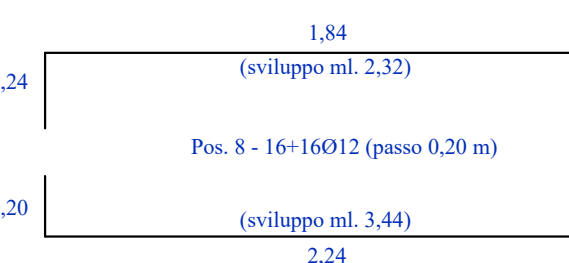
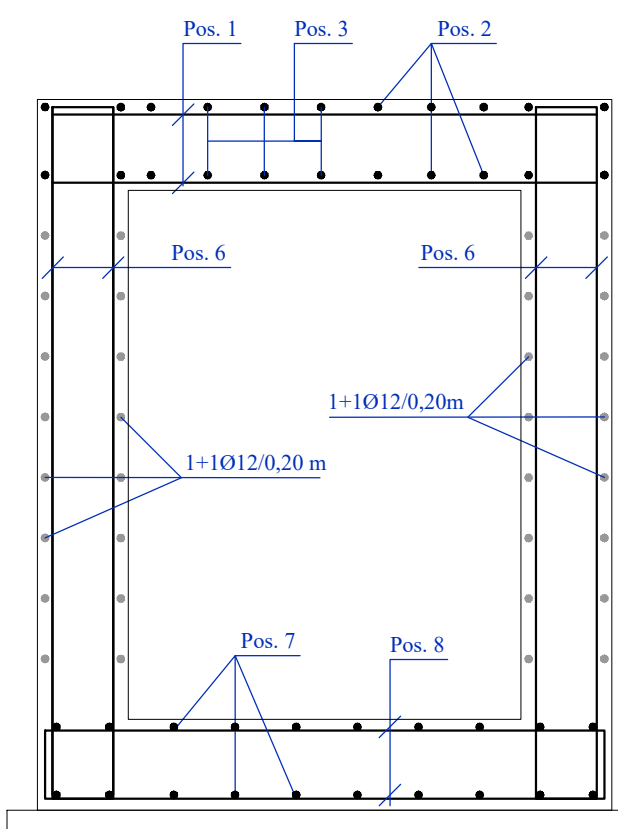
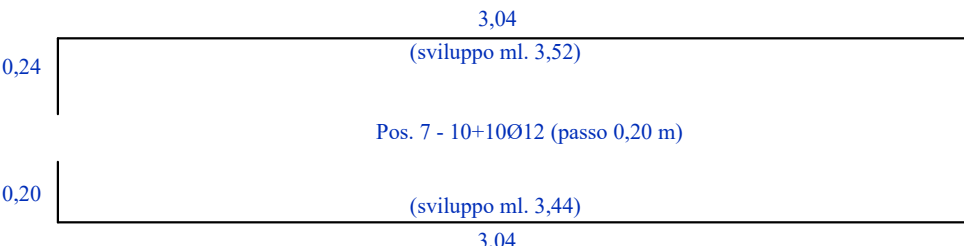
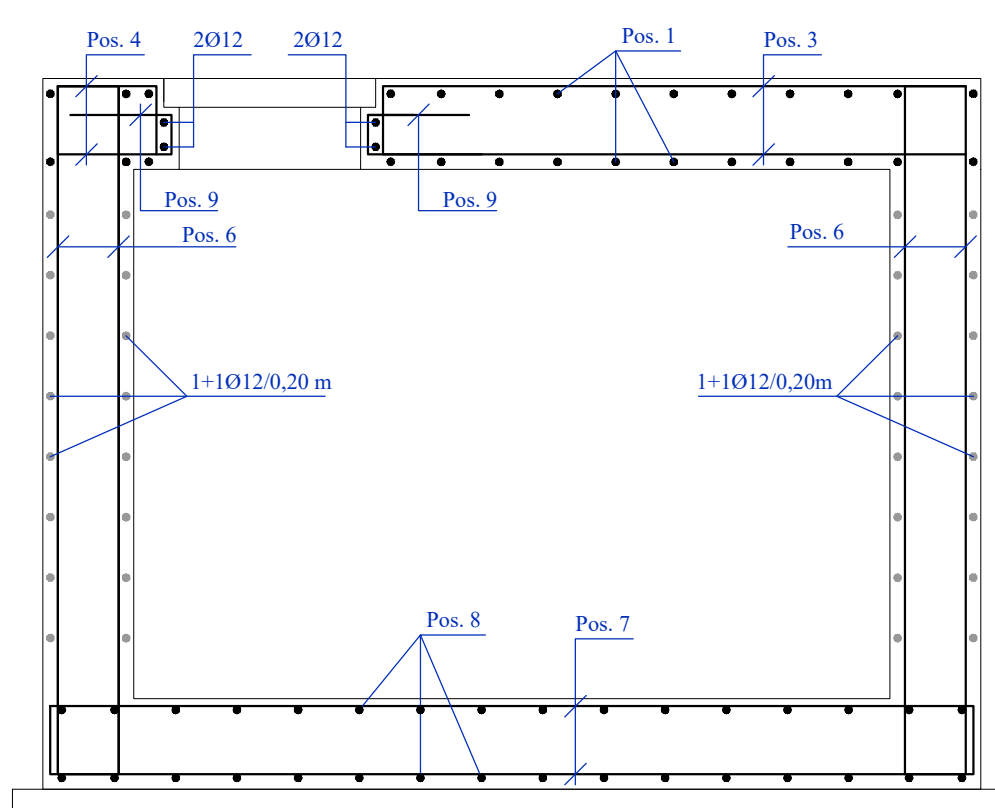
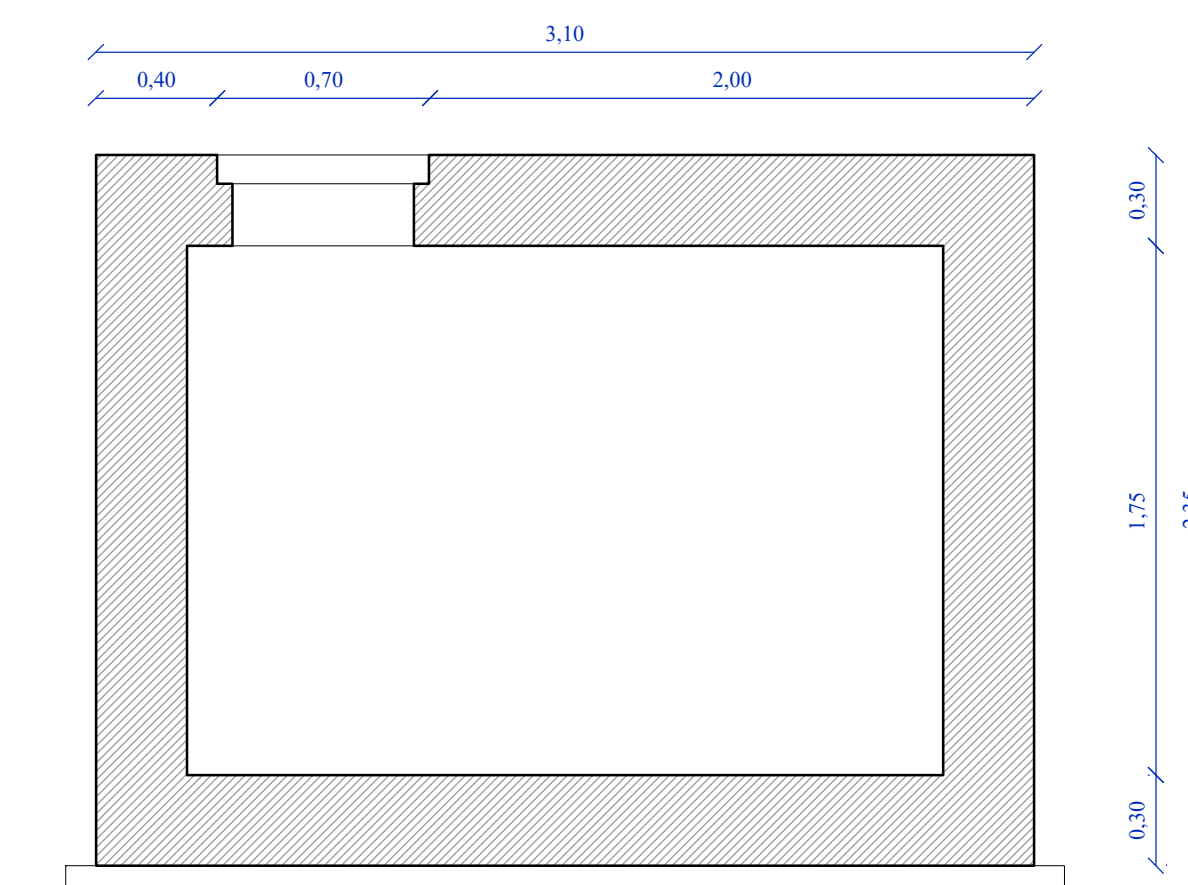
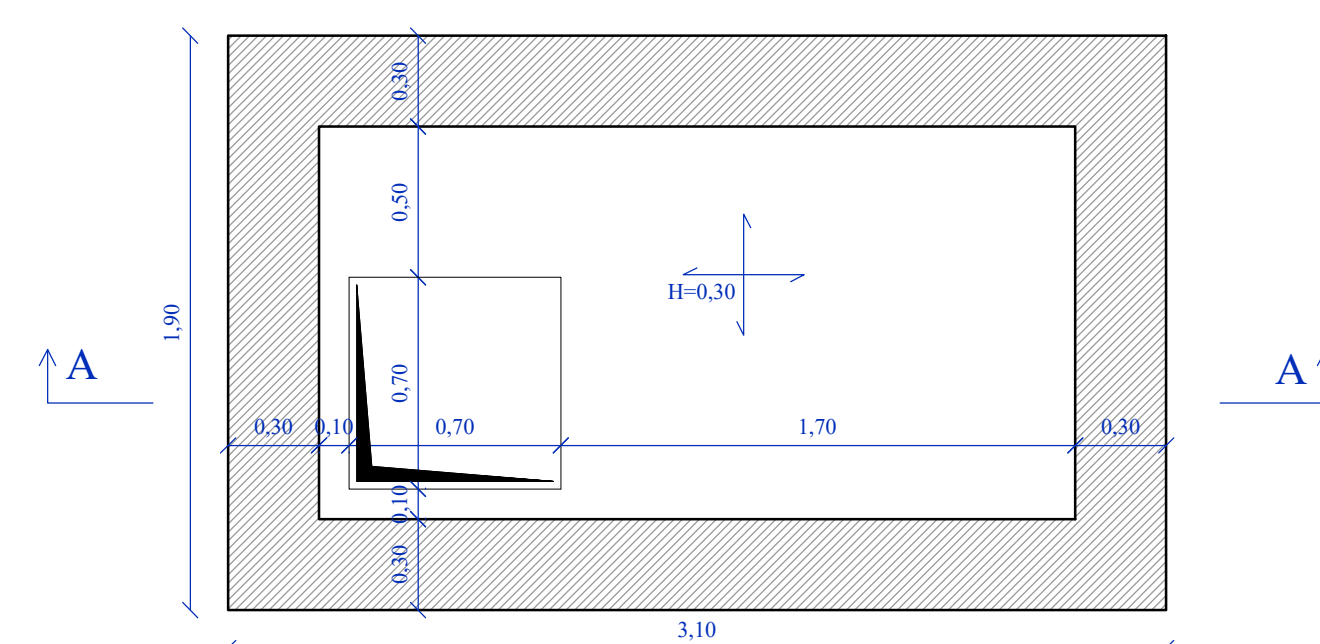
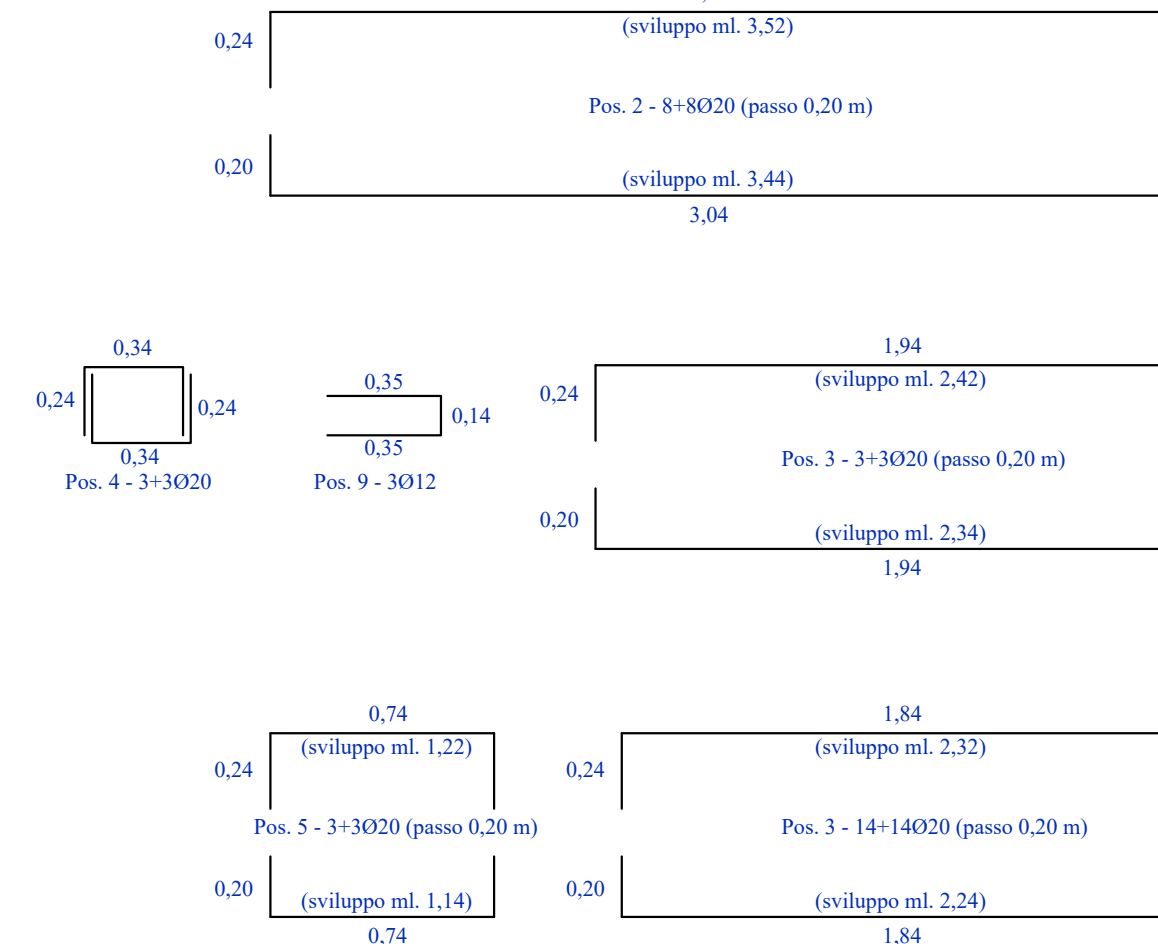
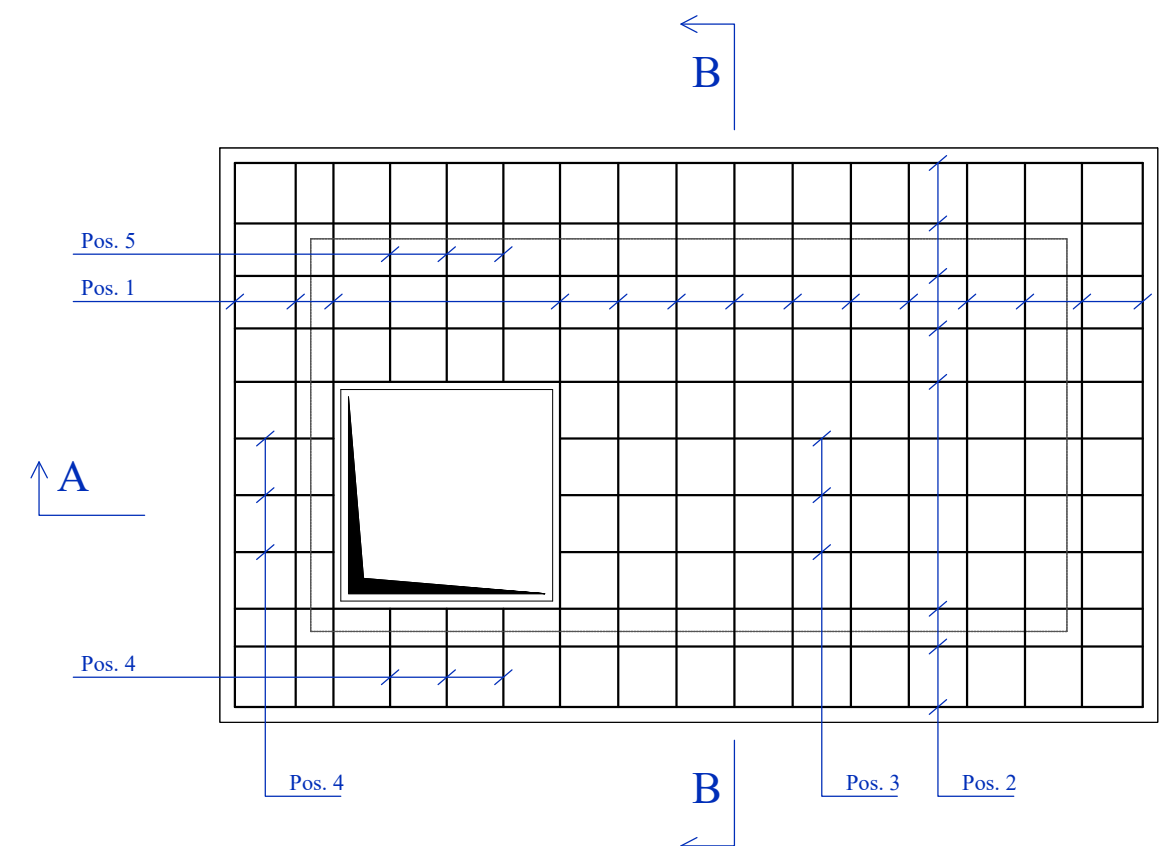
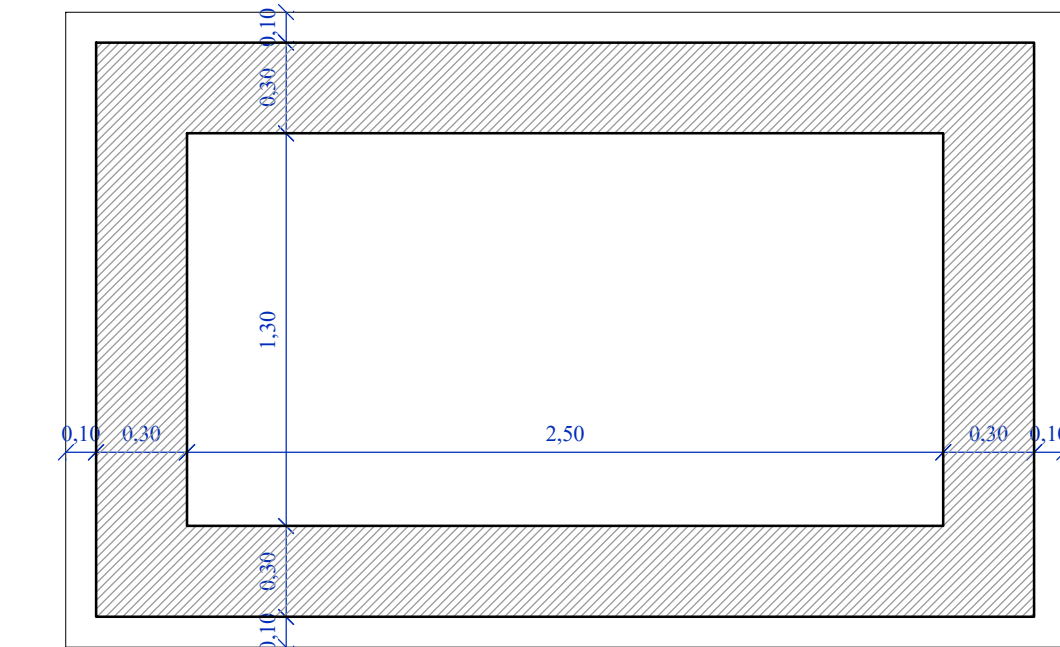
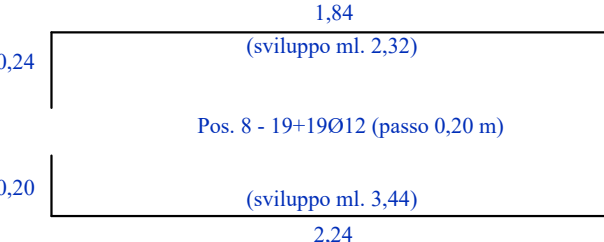
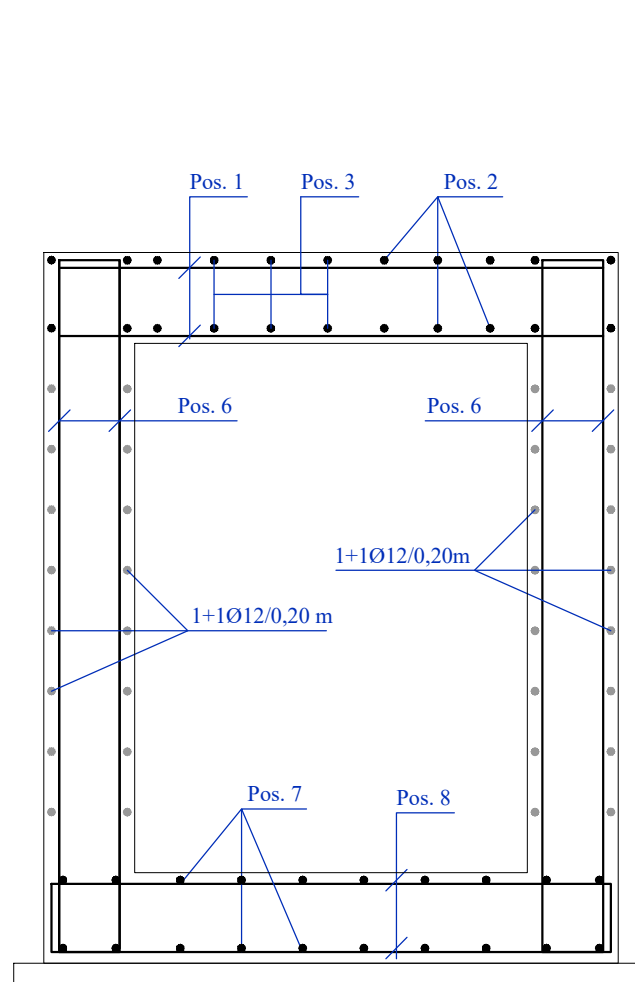
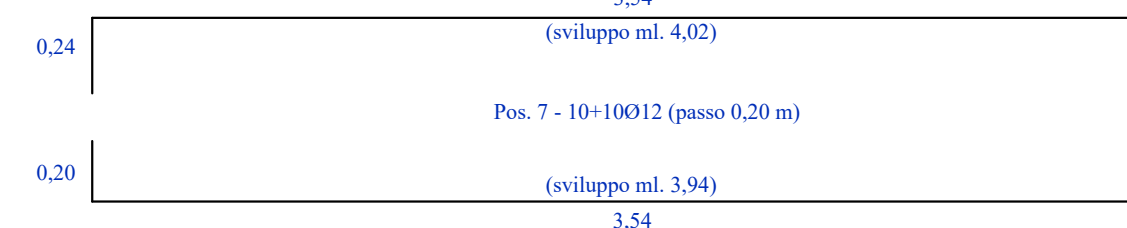
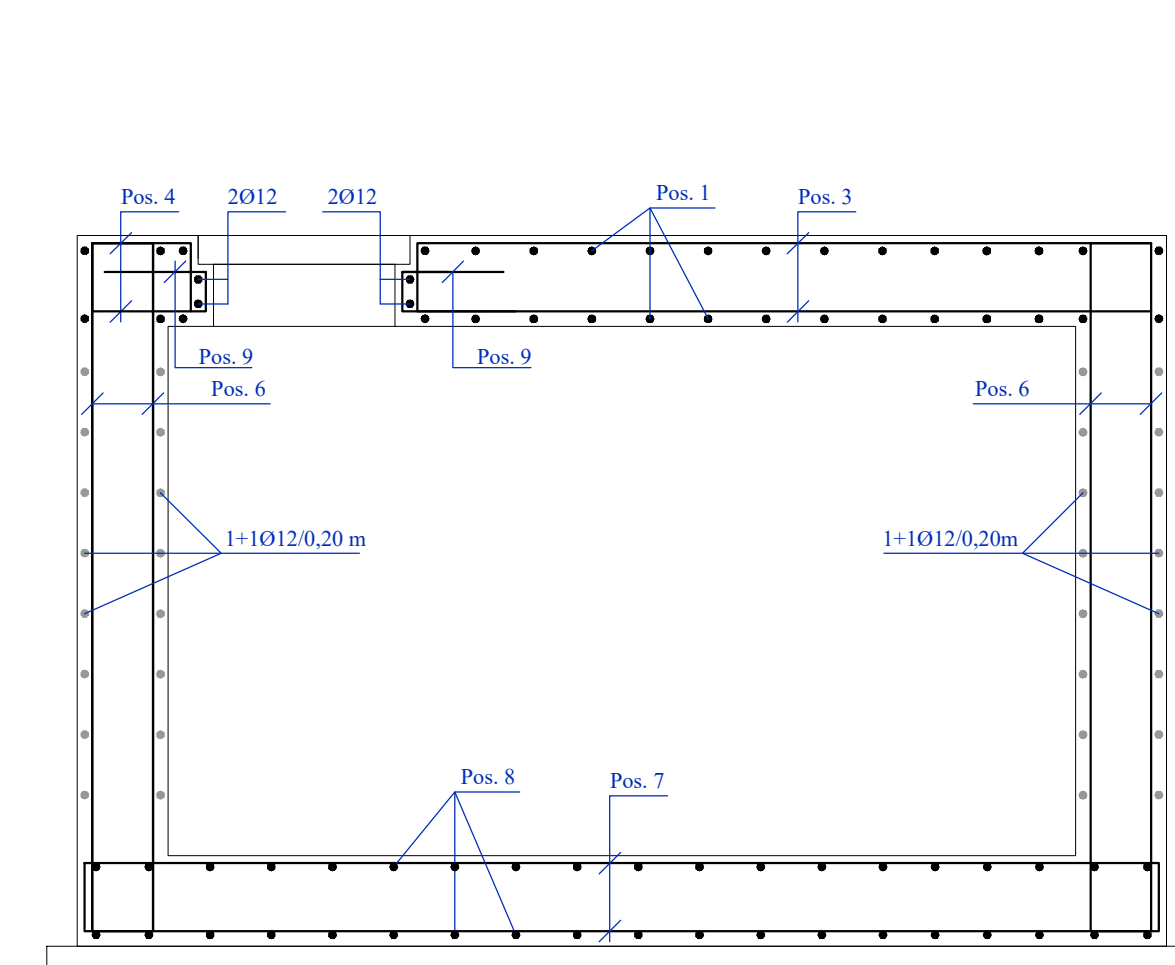
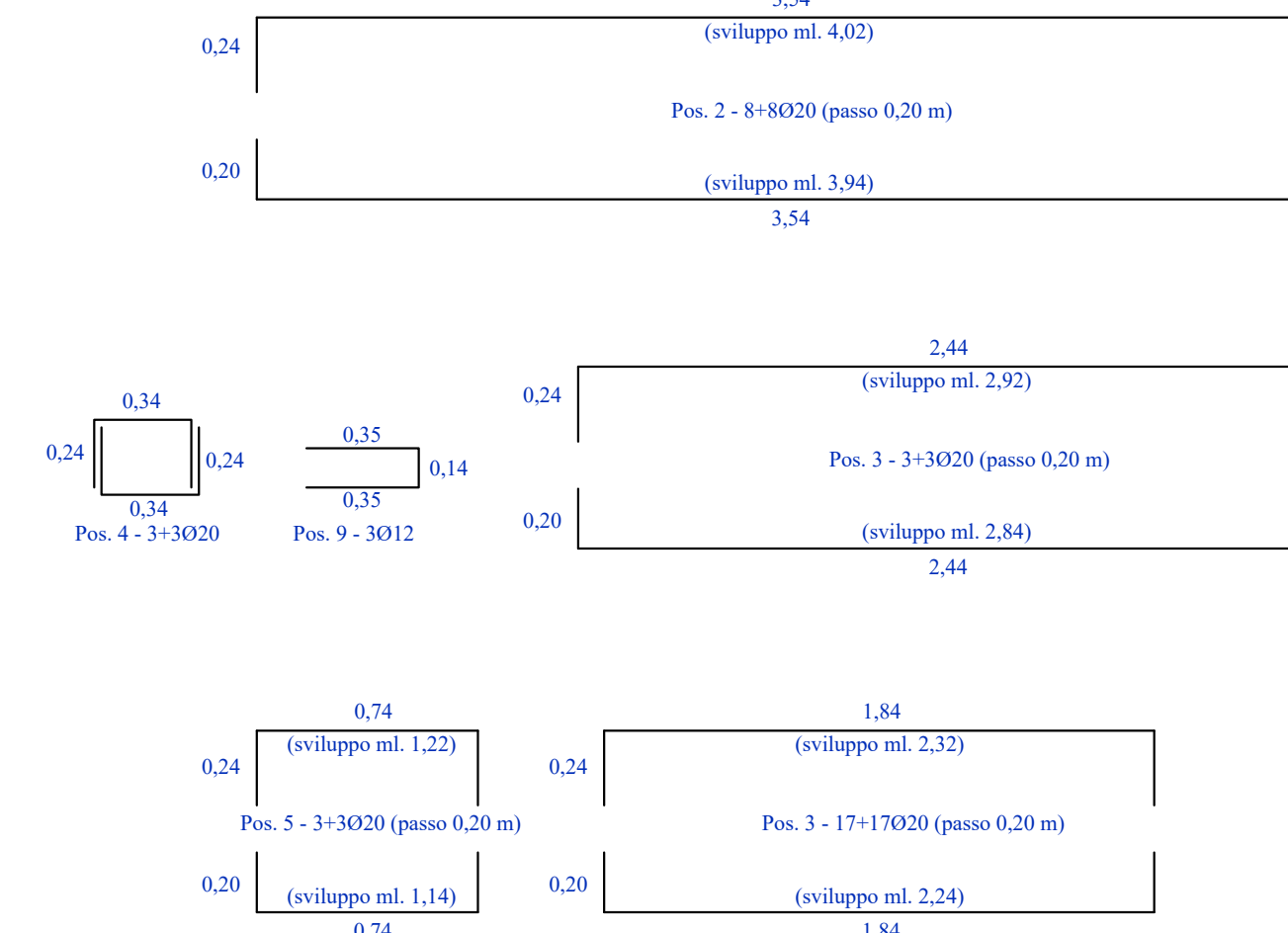
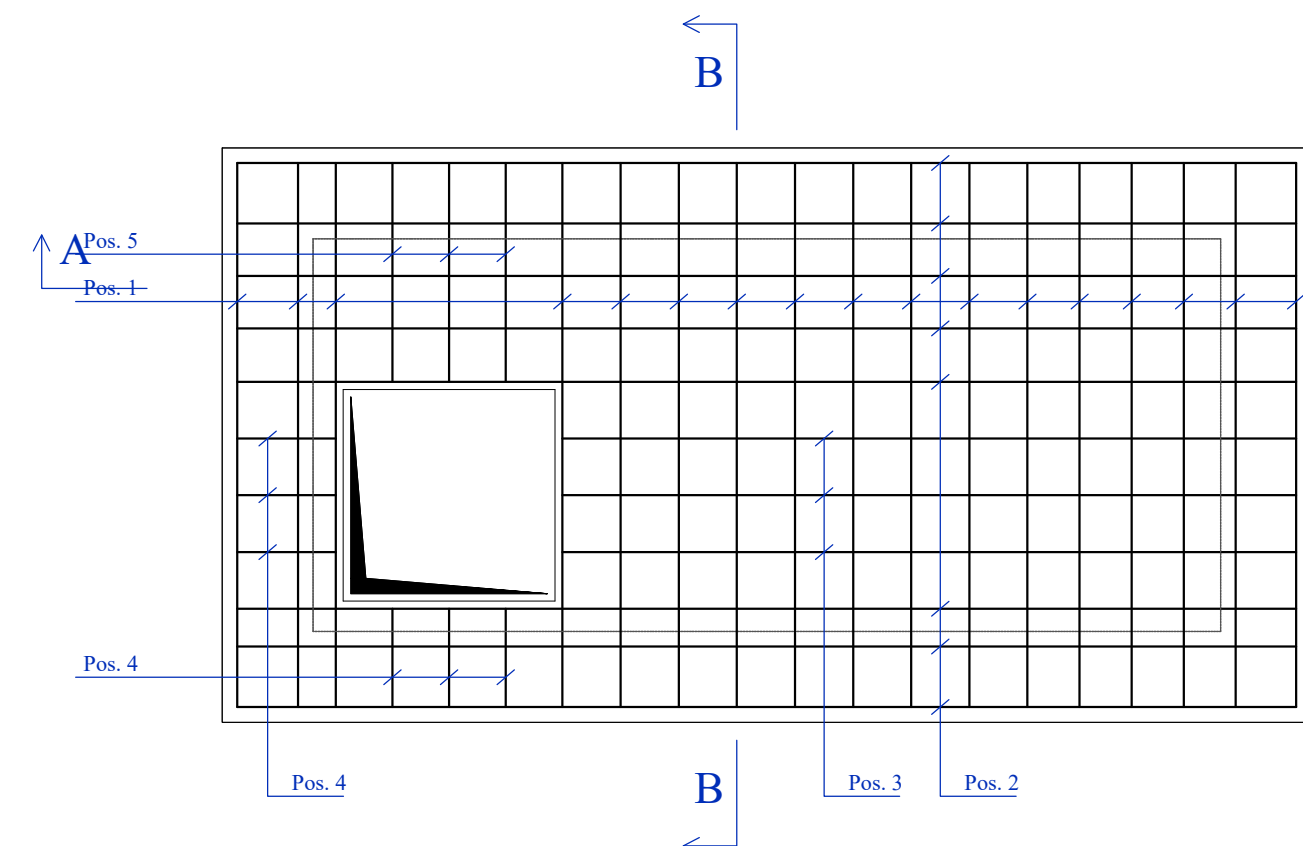
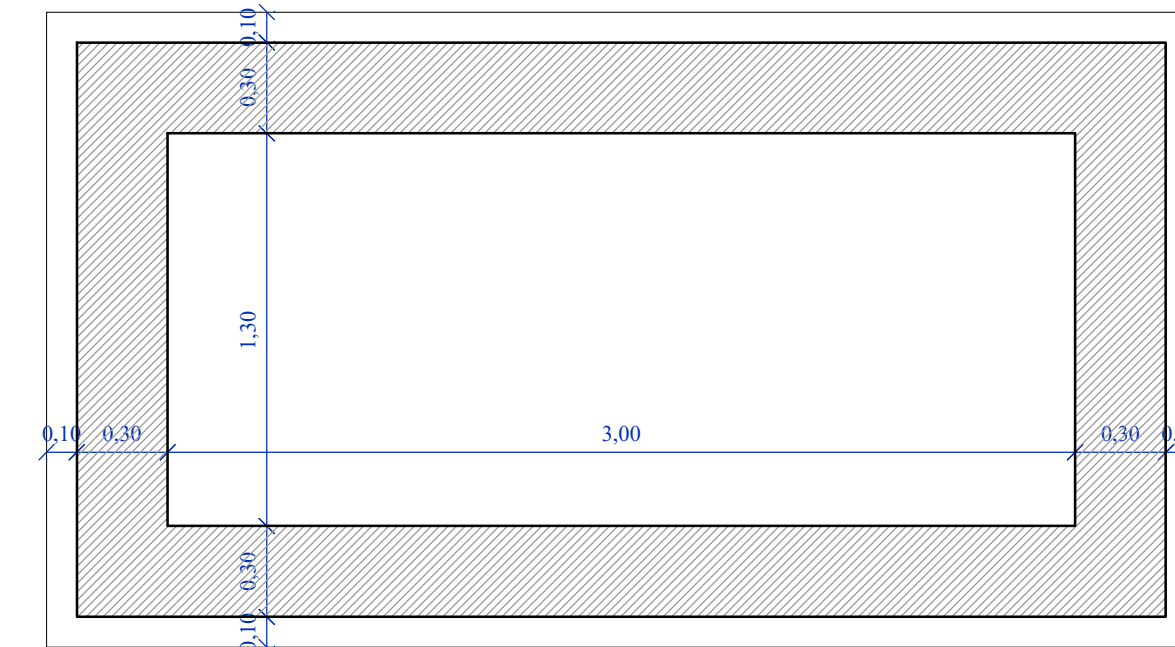


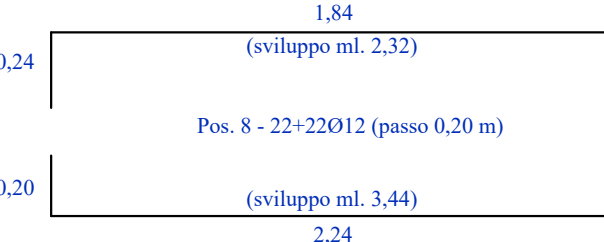
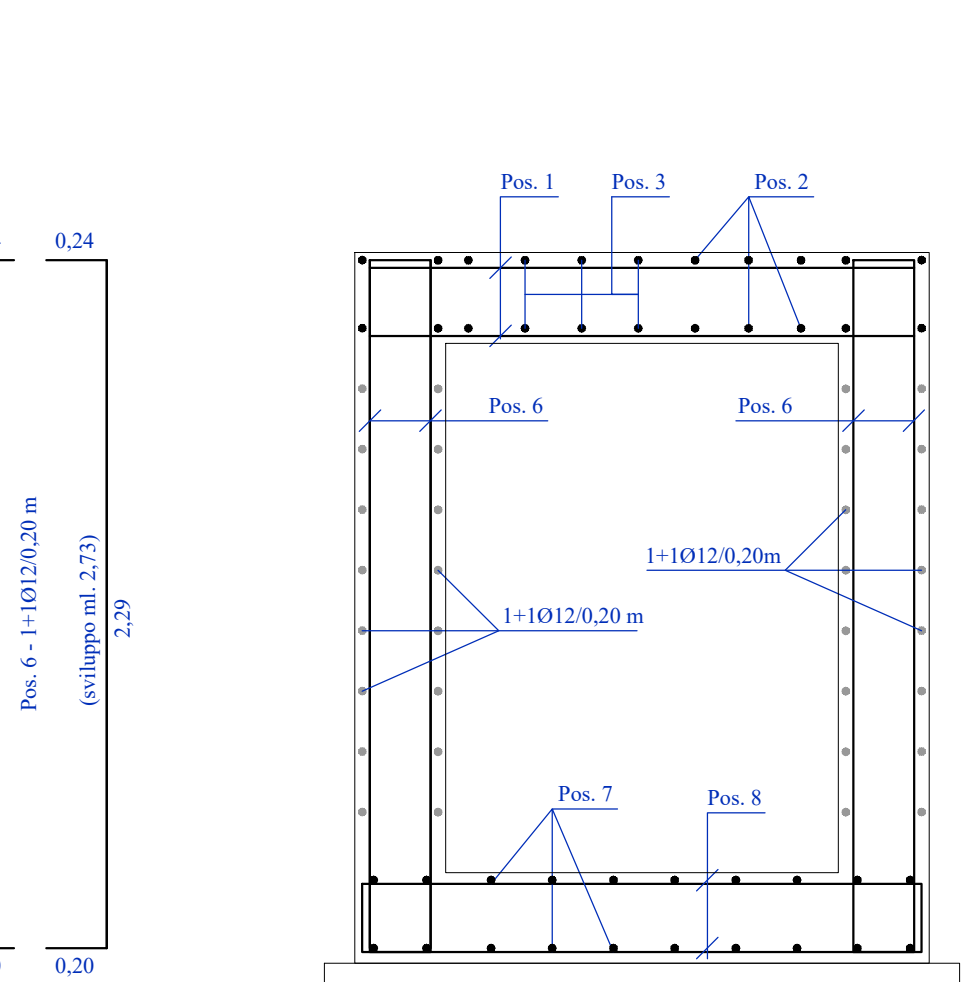
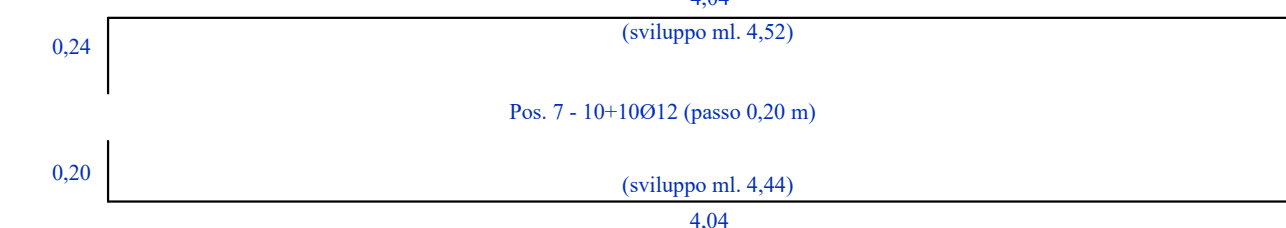
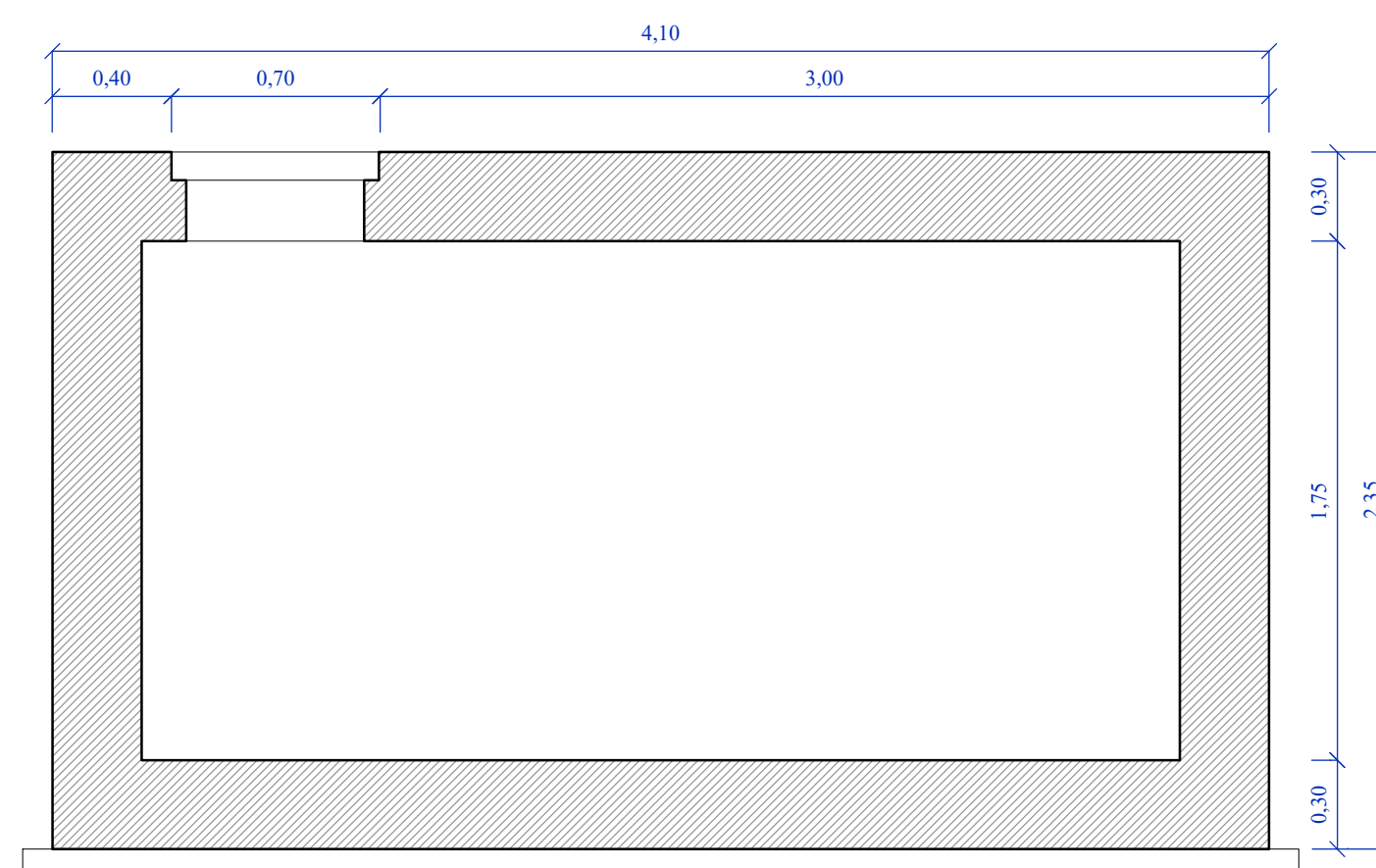
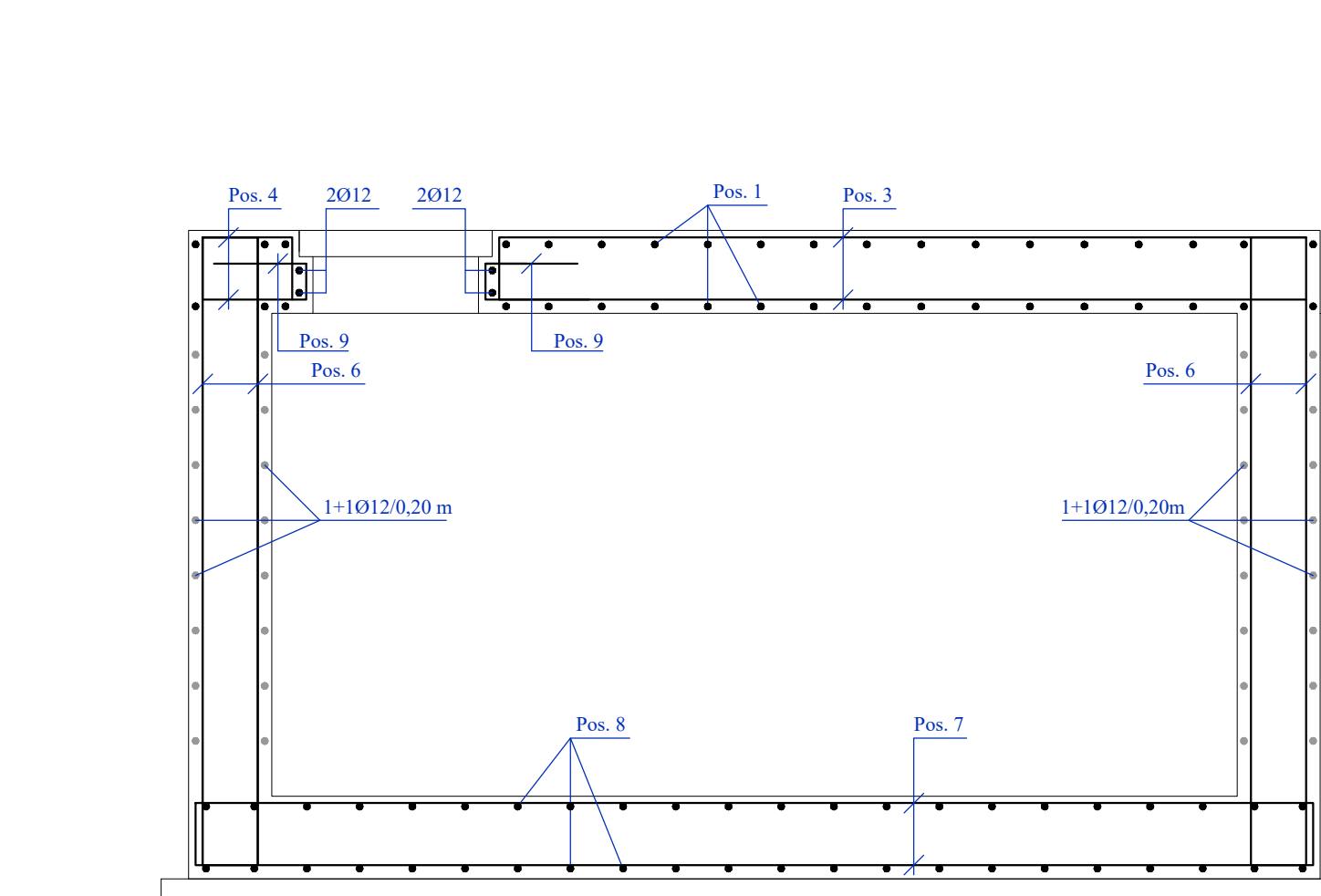
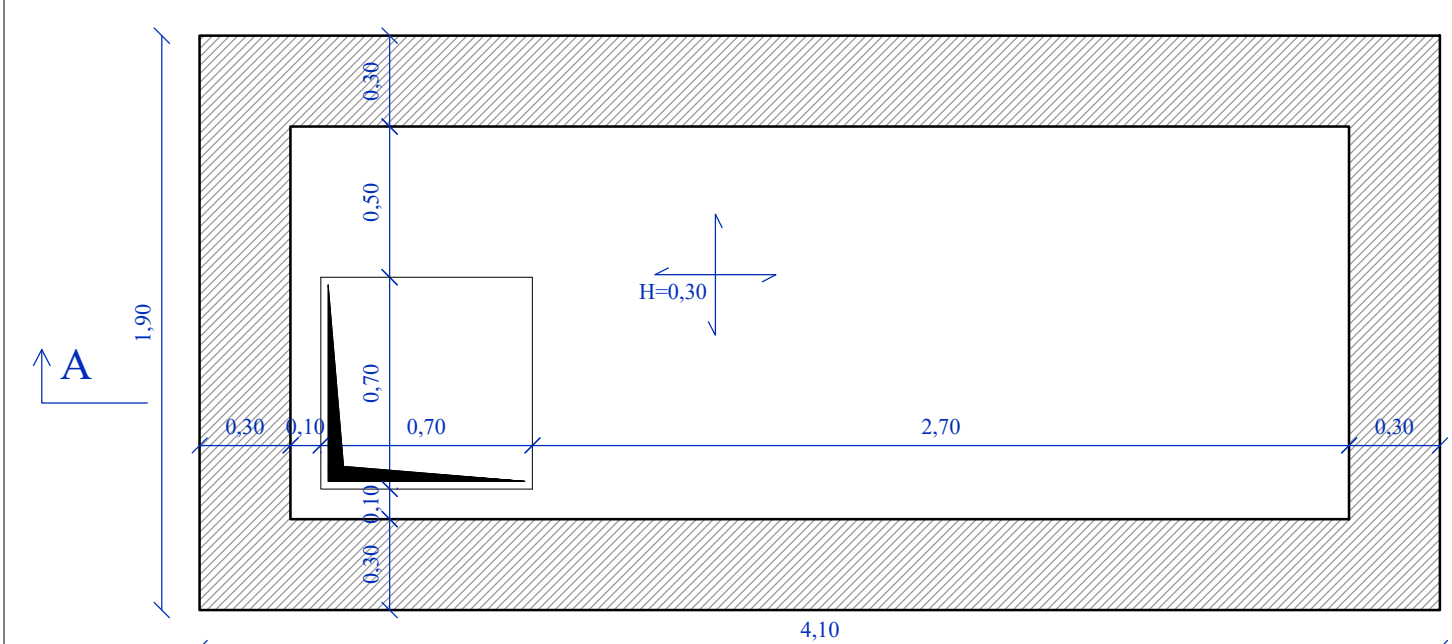
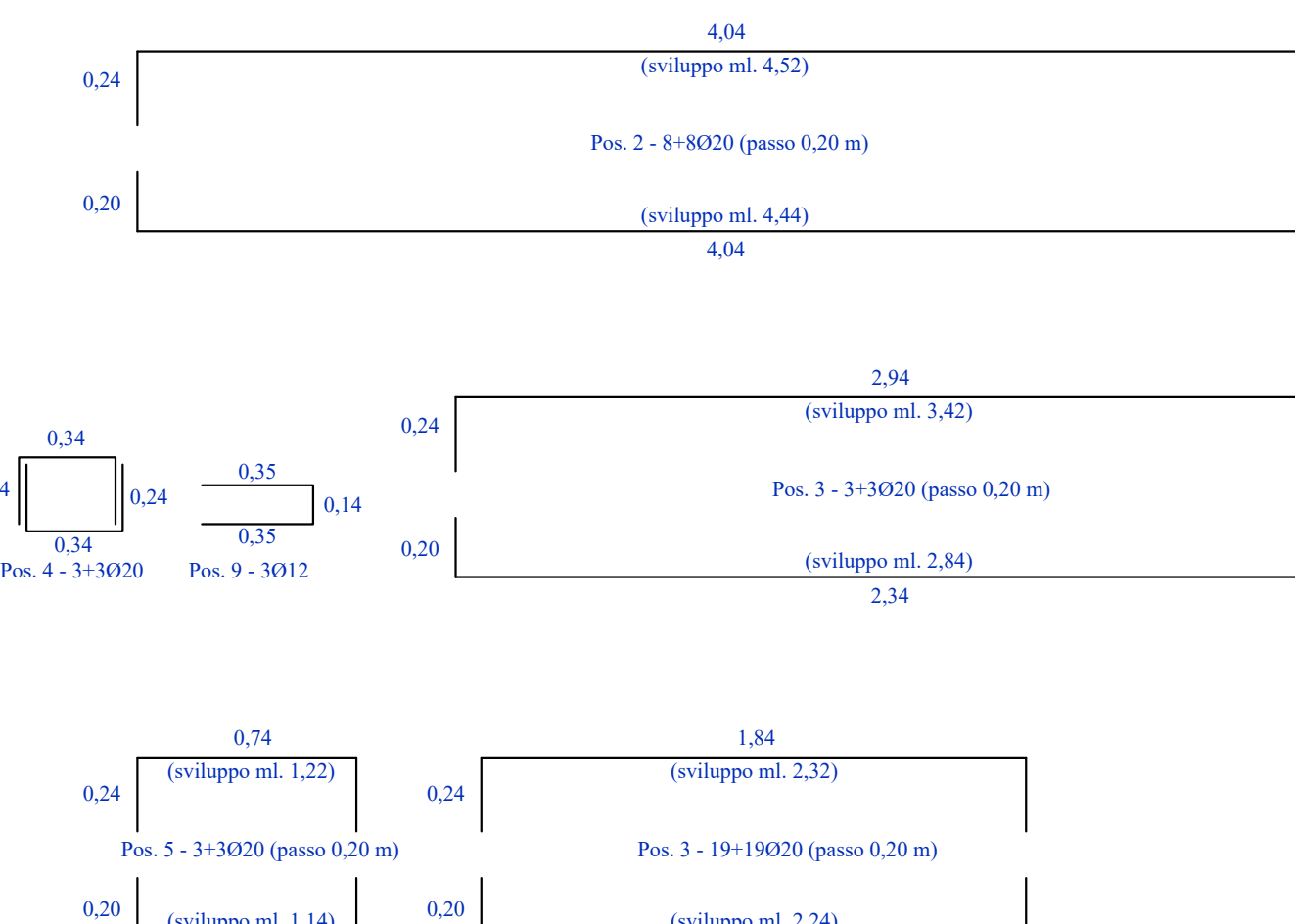
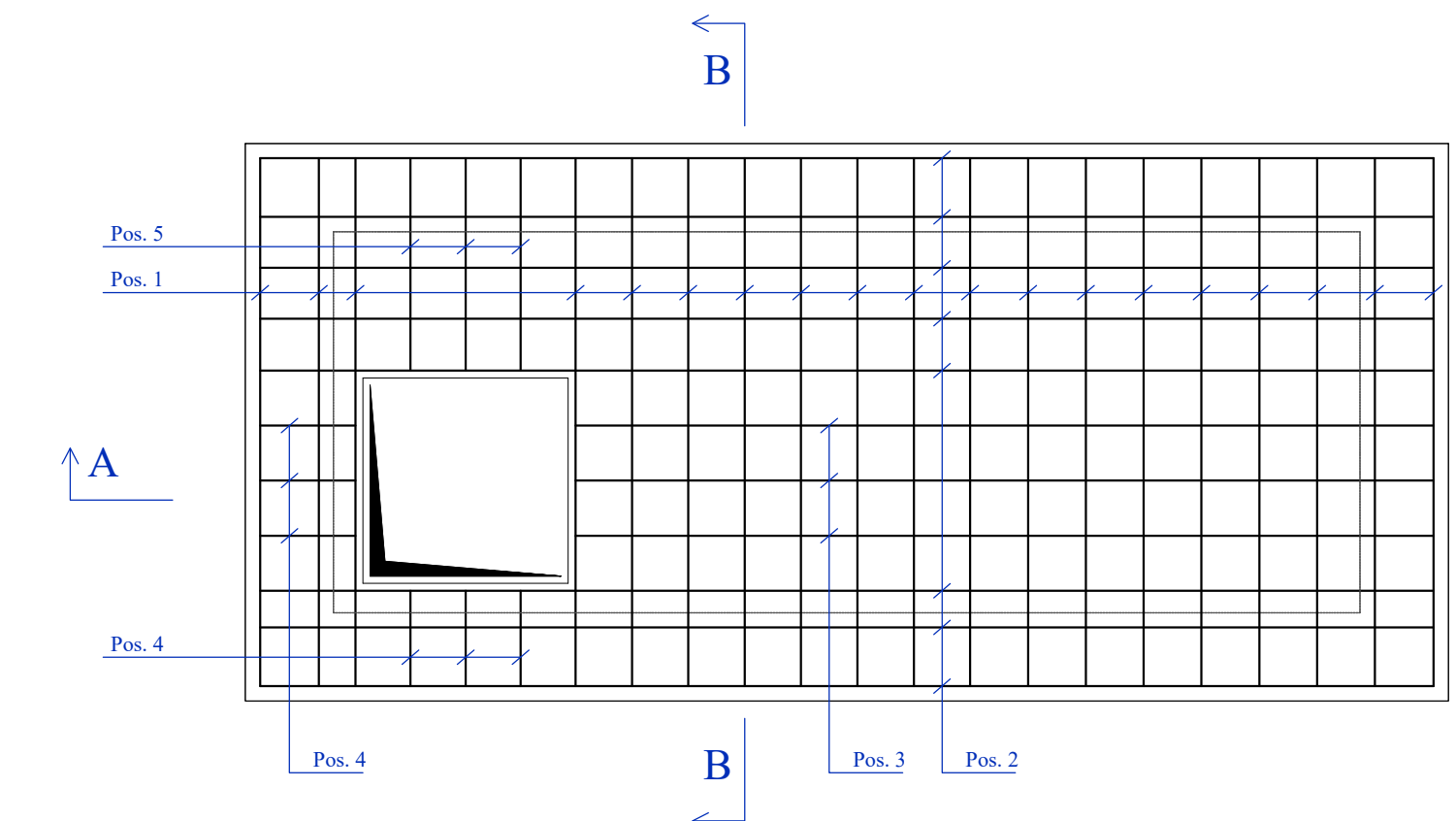
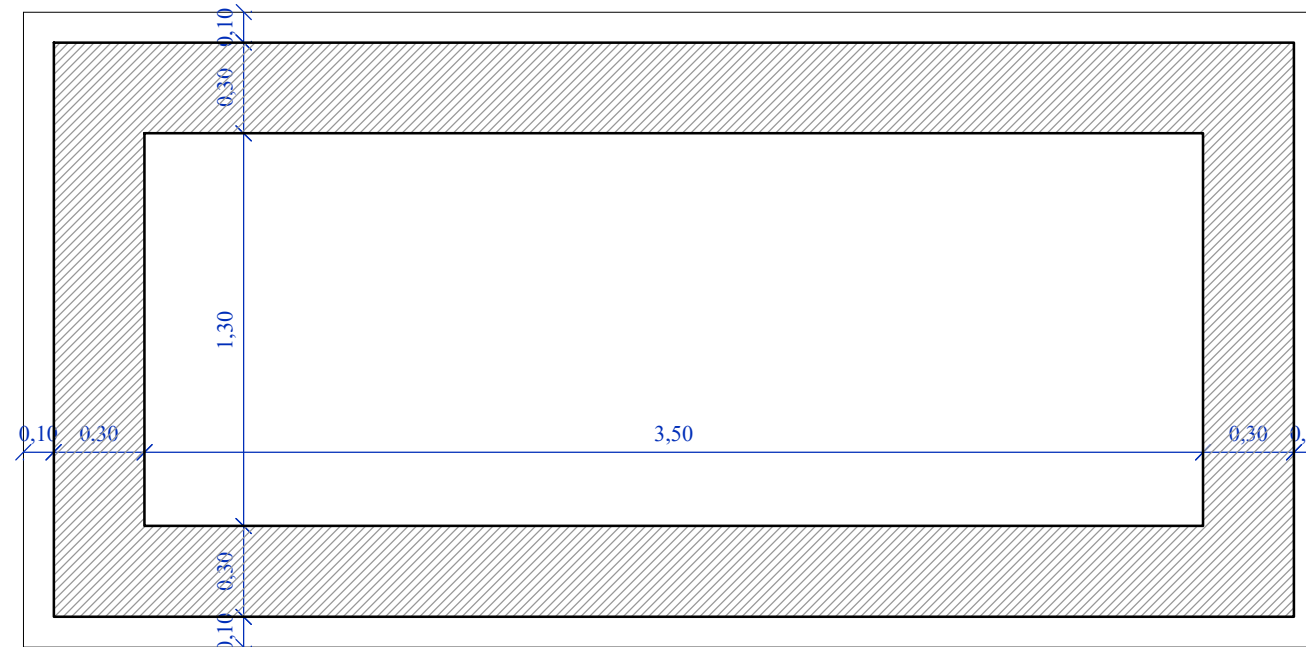
CARPENTERIA FONDAZIONE - R=1:25



CARPENTERIA FONDAZIONE - R=1:25



CARPENTERIA FONDAZIONE - R=1:25



| CONGLOMERATO CEMENTIZIO |                       |  |  |                          |
|-------------------------|-----------------------|--|--|--------------------------|
| ELEMENTO STRUTTURALE    | CLASSI DI CONSISTENZA | CLASSI DI RESISTENZA R <sub>cd</sub> (N/mm²) | CLASSI DI ESPOSIZIONE (da min. a max.) | CONFERIMENTO RINNO (DIN) |
| MAGRONE                 | -                     | 15   | -                                      | -                        |
| FONDAZIONE BASE         | S3                    | 30   | XC2                                    | 3,5                      |
| ELEVAZIONE PARETI       | S3                    | 30   | XC2                                    | 3,5                      |
| SOLETTA                 | S3                    | 30   | XC2                                    | 3,5                      |

|  |
|--|
| <p><b>ACCIAIO AD ADERENZA MIGLIORATA<br/>CONTROLLATO IN STABILIMENTO AVENTE<br/>LE SEGUENTI CARATTERISTICHE</b></p>              |
| <p><b>- FeB44K SALDABILE PER <math>\sigma \leq 26</math> mm.</b></p>   |
| <p><b>- <math>f_y/f_{yk} \geq 1.35</math>; <math>(f_t/f_y)</math> medio <math>\leq 1.13</math> (come da D. M. Gen. 1996)</b></p> |

**REGIONE SICILIANA**  
**CONSORZIO AMBITO TERRITORIALE OTTIMALE IDRICO**  
**DI AGRIGENTO**

**Girgenti**  
Acqua

L'AMMINISTRATORE DELEGATO

## PROGETTO ESECUTIVO

Opere di ristrutturazione ed automazione per ottimizzazione  
rete idrica Comune di Agrigento

|             |  |
|-------------|--|
| ALLEGATO N° | TITOLO ELABORATO   |
| 21.25       | Pozzetti di sfiato - Scarico - Nodi Automazione<br>Nodi Automazioni: Carpenterie |

**Visti ed approvazioni:**

CUP:

**SERVIZI  
INGEGNERIA**  
**delta**

|      |             |      |            |             |           |
|------|-------------|------|------------|-------------|-----------|
| B    |             |      |            |             |           |
| A    |             |      |            |             |           |
| REV. | DESCRIZIONE | DATA | VERIFICATO | CONTROLLATO | APPROVATO |

**delta** Ingegneria s.r.l.

**I DIRETTORI TECNICI:**  
 Ing. Maurizio Carlini  
 Ing. Nicola D'Alessandro

**Arch. Carmelo Carlini**  
**Ing. Domenico D'Alessandro**  
**Ing. Alfonso Cutraro**  
**Ing. Gerardo Vaccaro**  
**Cap. Massimo Di Vito**

|      |             |      |            |             |           |
|------|-------------|------|------------|-------------|-----------|
| B    |             |      |            |             |           |
| A    |             |      |            |             |           |
| REV. | DESCRIZIONE | DATA | VERIFICATO | CONTROLLATO | APPROVATO |